

Title	Various Parks	11/29/2023
	by Todd King in Member District ADA Project Request	id. 44815157
	235 East Beech Drive Schaumburg, Illinois 60193 United States 847 985 2115 parksfacilities@parkfun.com	

Original Submission 11/29/2023

Score	n/a
Name	Todd King
Job Title	Director of Parks and Planning
E-mail Address	tking@parkfun.com
Phone Number	847.985.2115
Park District	Schaumburg
Project Location	Various Parks
Project Status	New Maintenance Alteration
Project Type	Routes and Surfaces
Routes and Surfaces- select a Project Category below:	Sidewalks Walking Surfaces Accessible Routes- Means of Egress Curb Ramps Parking Spots
Benefits of the Project	The scope of work involves a variety of replacement/renovation of asphalt pathway surfacing with a variety of cracks greater than 1/2" and rise greater than 1/4". New asphalt pathway surfacing was installed that conforms to current ADA standards.
Items that will become ADA Compliant	Asphalt Pathways and Park Lots

The project is designed or constructed, or applies human resources, to comply with:

The 2010 Standards for Accessible Design

Upload Project Related Files, Photos, Videos or Audio

[005_Apollo_Park_22.pdf](#)

[006_Gray_Farm_Park_22.pdf](#)

[007_601_Morse_22.pdf](#)

[008_Timbercrest_Park_22.pdf](#)

[009_Timbercrest_Park_22.pdf](#)

[010_CRC_22.pdf](#)

[011_Campanelli_Park_22.pdf](#)

[012_CRC_23.pdf](#)

[013_Veterans_Paul_Revere_23.pdf](#)

[014_Woodstock_23.pdf](#)

[015_Lancer_Creek_23.pdf](#)

[016_Spring_Valley_23.pdf](#)

[017_Hoover_Park_23.pdf](#)

[018_Campanelli_Park_23.pdf](#)

[019_Timbercrest_Park_23.pdf](#)

Budget Table for ADA Related Expenses

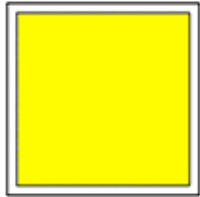
[Budget Table.xlsx](#)

ADA Dollars Requested	291450.0
-----------------------	----------

Notes related to requested amount



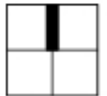
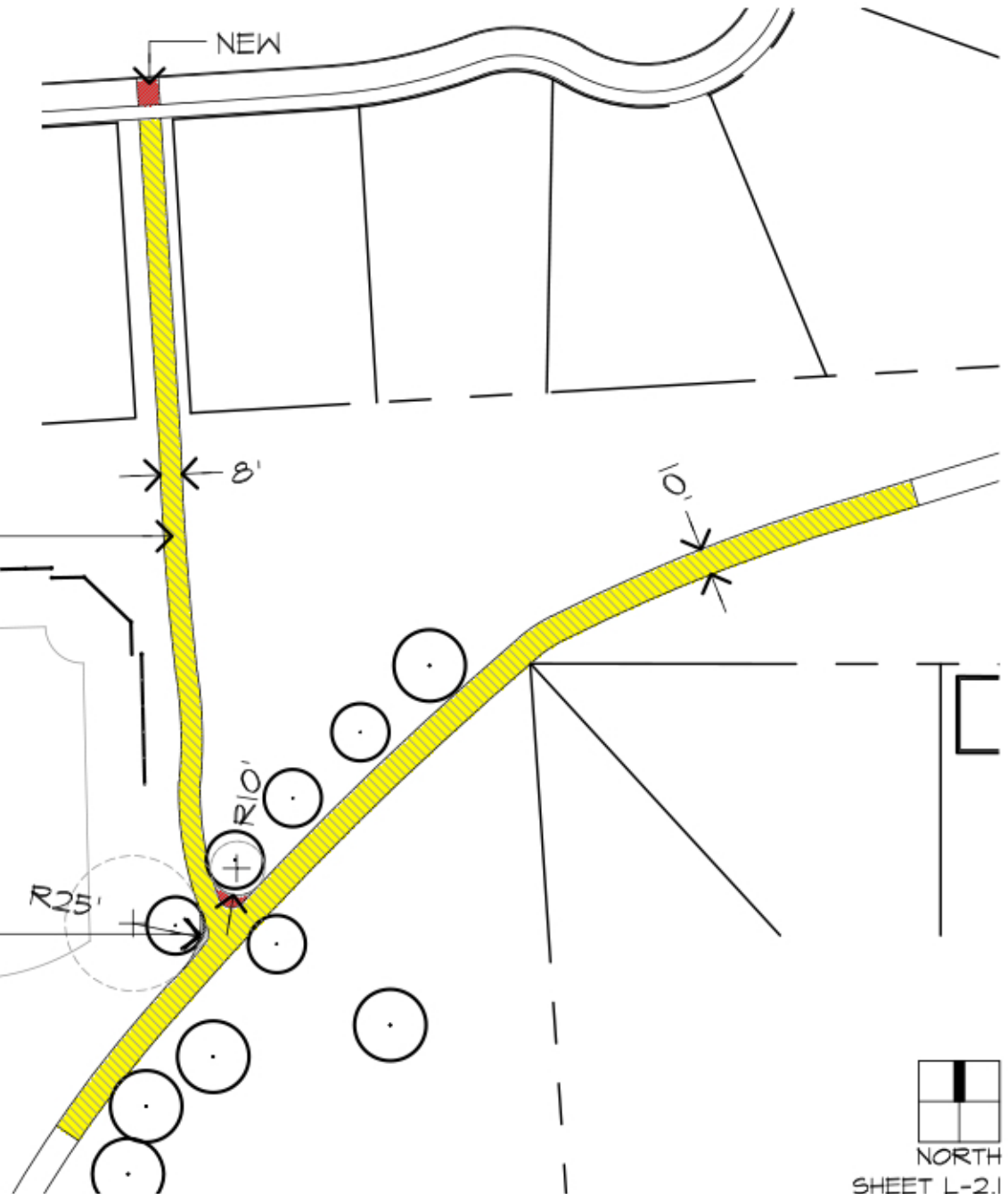
New Asphalt Pathway



Remove & Replace Asphalt Pathway

REMOVE ASPHALT PATHWAY
SUPPLEMENT BASE WITH 3" OF
NEW STONE BASE AND REPLACE
ASPHALT PATHWAY (8,525 S.F.)
(SEE DETAIL B, SHEET L-3.2)

NEW ASPHALT PATHWAY
(175 S.F.) (TOTAL FOR THIS SITE)
(SEE DETAIL A, SHEET L-3.1)



NORTH
SHEET L-2.1





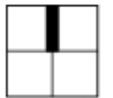
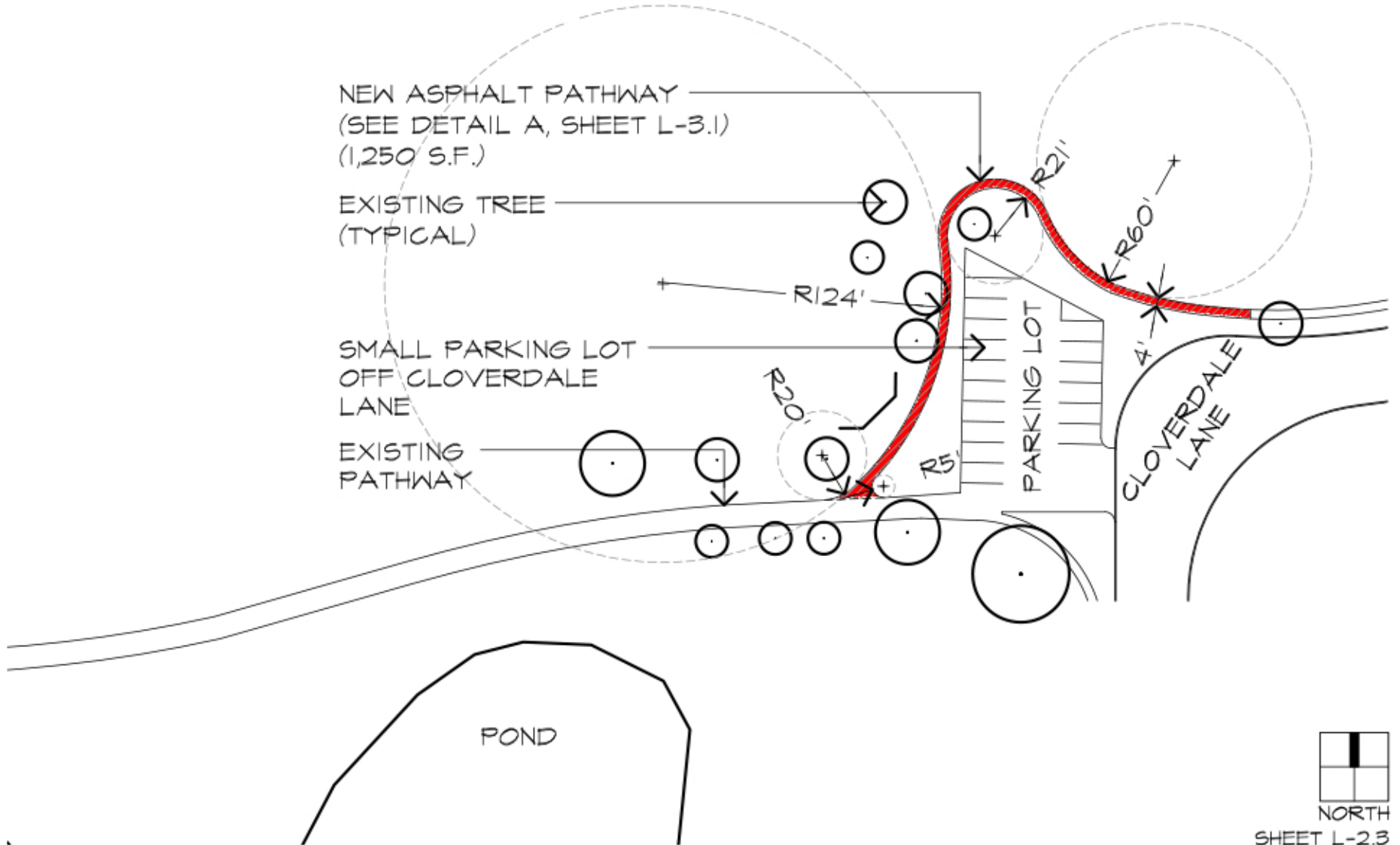
New Asphalt Pathway

NEW ASPHALT PATHWAY
(SEE DETAIL A, SHEET L-3.1)
(1,250 S.F.)

EXISTING TREE
(TYPICAL)

SMALL PARKING LOT
OFF CLOVERDALE
LANE

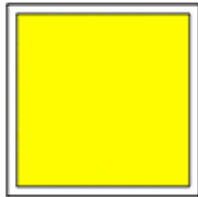
EXISTING
PATHWAY



NORTH

SHEET L-2.3

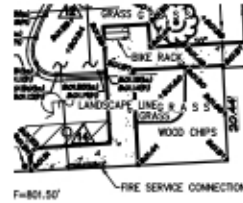




Remove & Replace
Asphalt Pathway



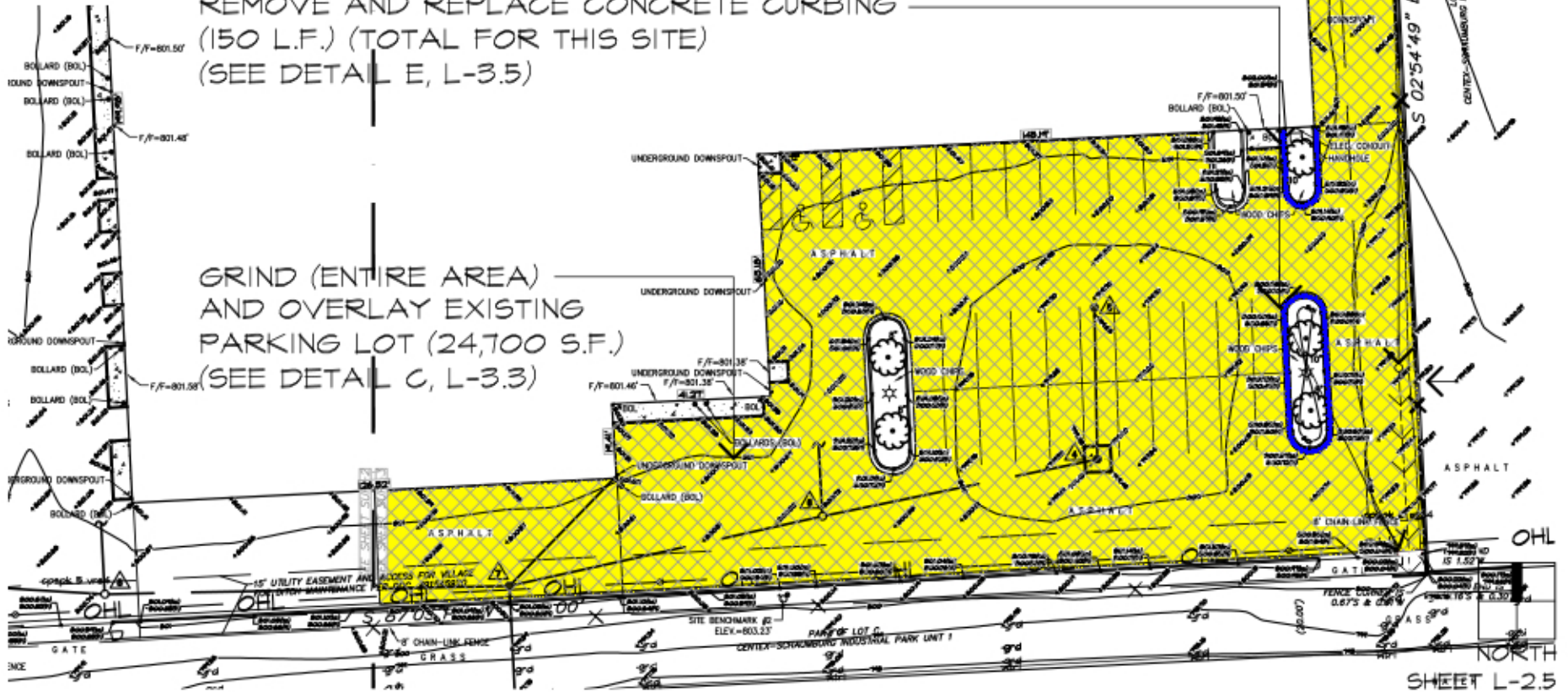
New Concrete Curbing

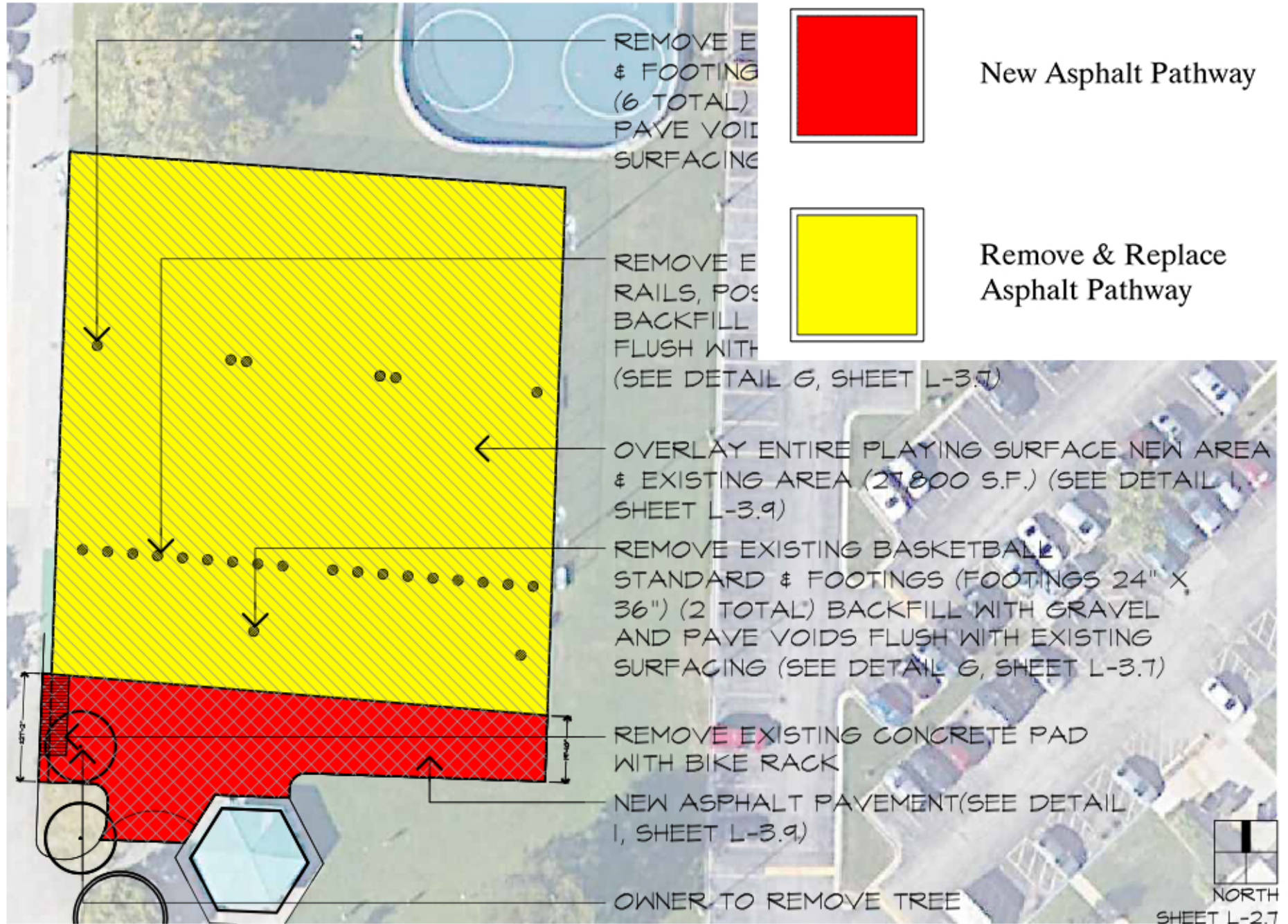


IMPROVE (TOTAL) INSTALL 4" GHT INTO DRAINAGE F, L-3.6)

REMOVE AND REPLACE CONCRETE CURBING (150 L.F.) (TOTAL FOR THIS SITE) (SEE DETAIL E, L-3.5)

GRIND (ENTIRE AREA) AND OVERLAY EXISTING PARKING LOT (24,700 S.F.) (SEE DETAIL C, L-3.3)

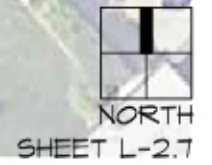


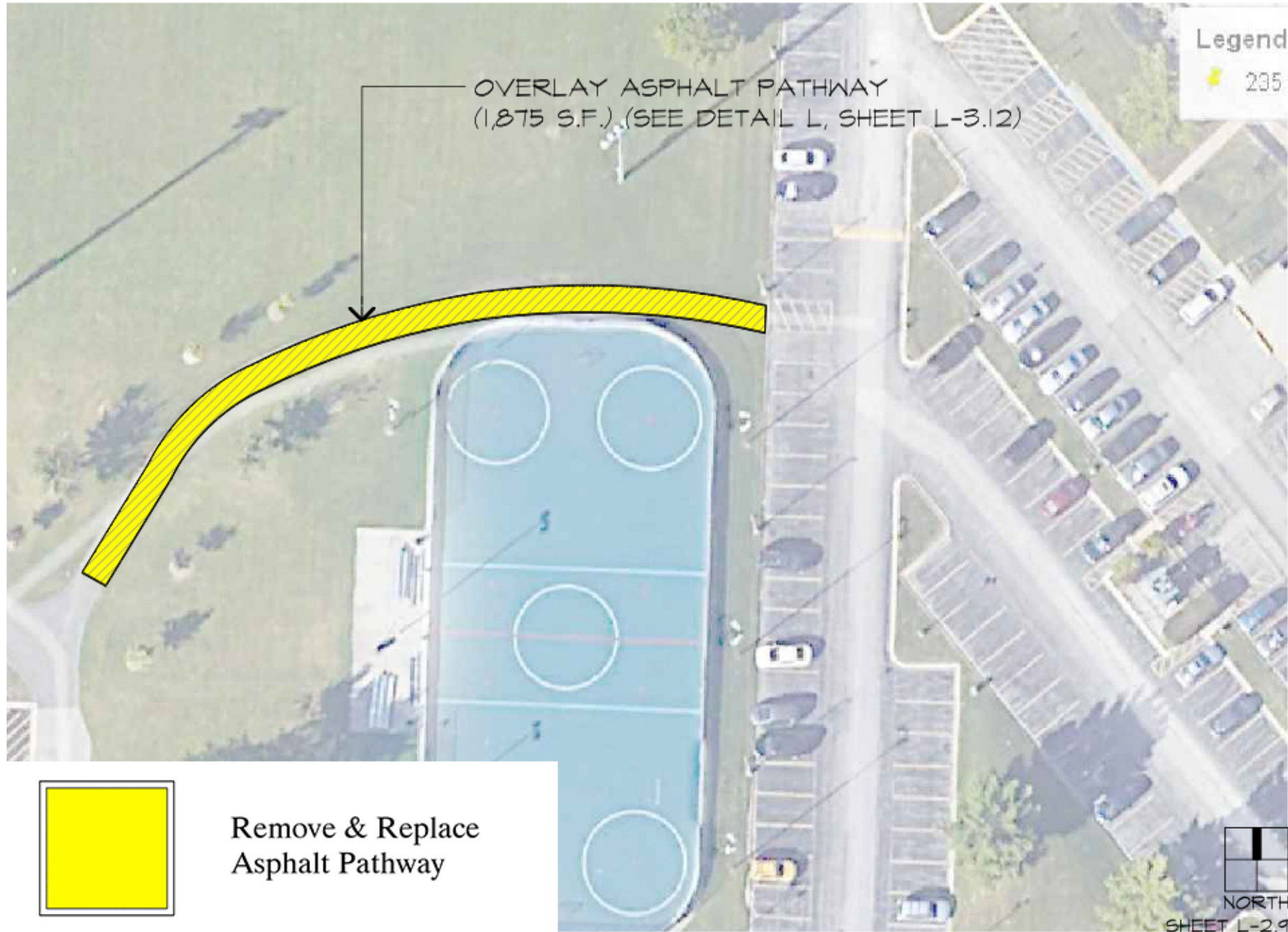


2022 PAVING PROJECTS
 TIMBERCREST PARK

SCALE : N.T.S.
 DATE : 04/20/22

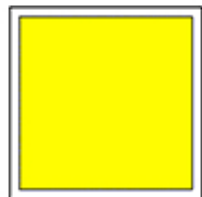
S.c.h.a.u.m.b.u.r.g
PARK DISTRICT





Legend
 235

OVERLAY ASPHALT PATHWAY
 (1,875 S.F.) (SEE DETAIL L, SHEET L-3.12)



Remove & Replace
 Asphalt Pathway

2022 PAVING PROJECTS
 TIMBERCREST PARK

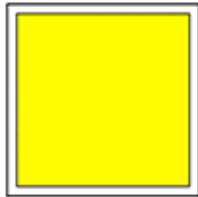
SCALE : N.T.S.
 DATE : 04/20/22



S.c.h.a.u.m.b.u.r.g
PARK DISTRICT



NORTH
 SHEET L-2.9

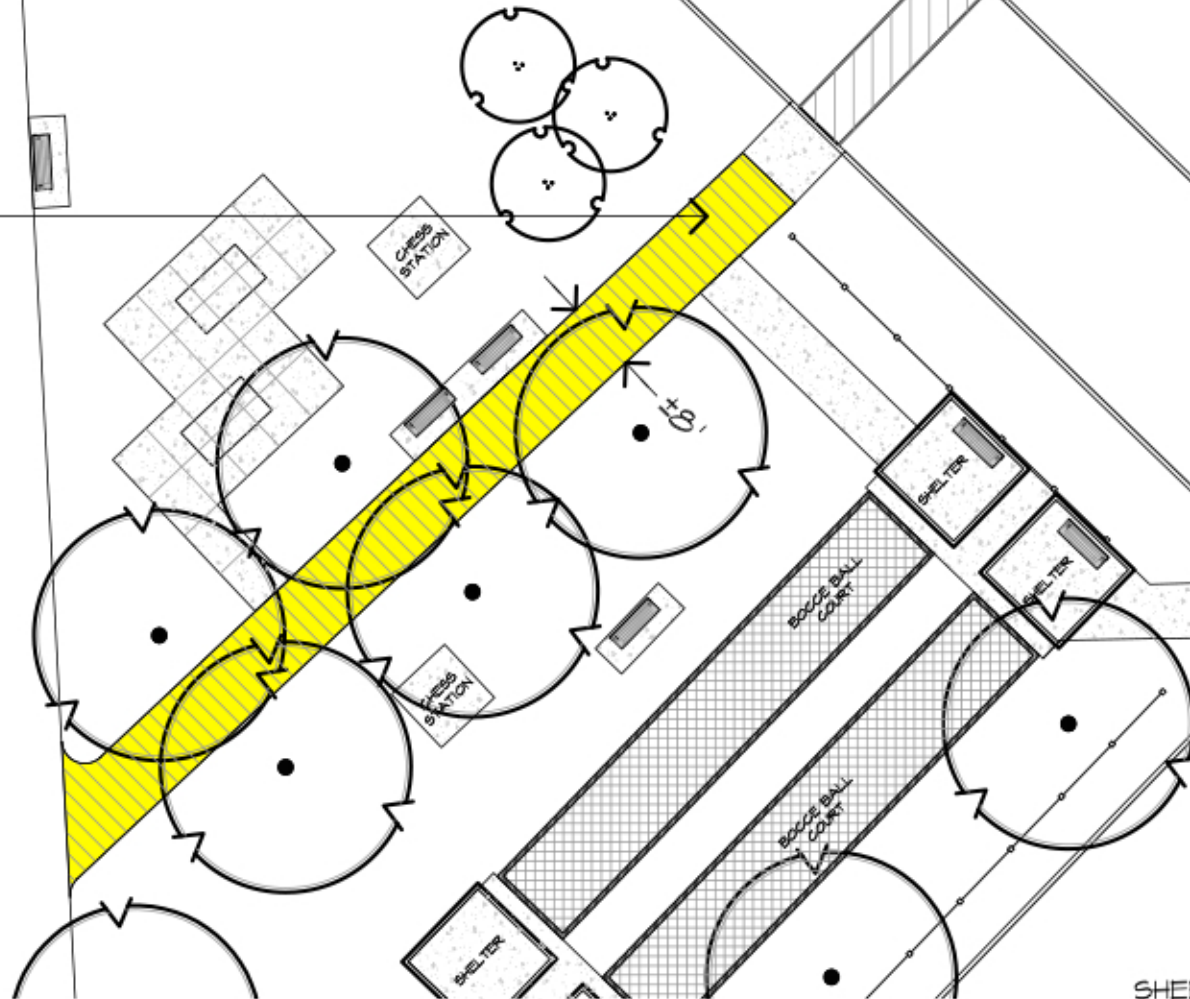
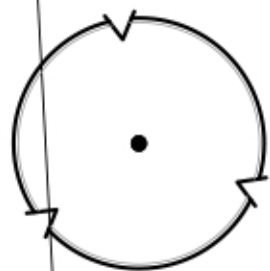


Remove & Replace
Asphalt Pathway



BODE ROAD

REMOVE AND
REPLACE
ASPHALT
PATHWAY
(860 S.F.)
(SEE DETAIL B,
SHEET L-3.2)



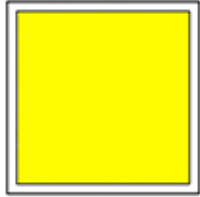
NORTH
SHEET L-2.11

2022 PAVING PROJECTS
COMMUNITY RECREATION CENTER

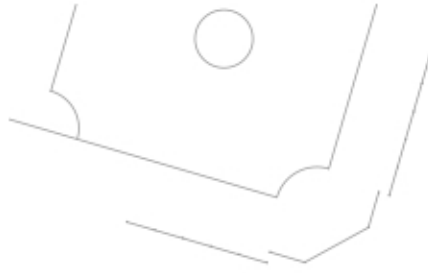
SCALE : N.T.S.
DATE : 04/20/22



S.c.h.a.u.m.b.u.r.g
PARK DISTRICT



Remove & Replace
Asphalt Pathway



REMOVE ASPHALT PATHWAY
SUPPLEMENT BASE WITH 3" OF
NEW STONE BASE AND REPLACE
ASPHALT PATHWAY (1,150 S.F.)
(SEE DETAIL B, SHEET L-3.2)

8'

WEATHERSFIELD WAY



NORTH

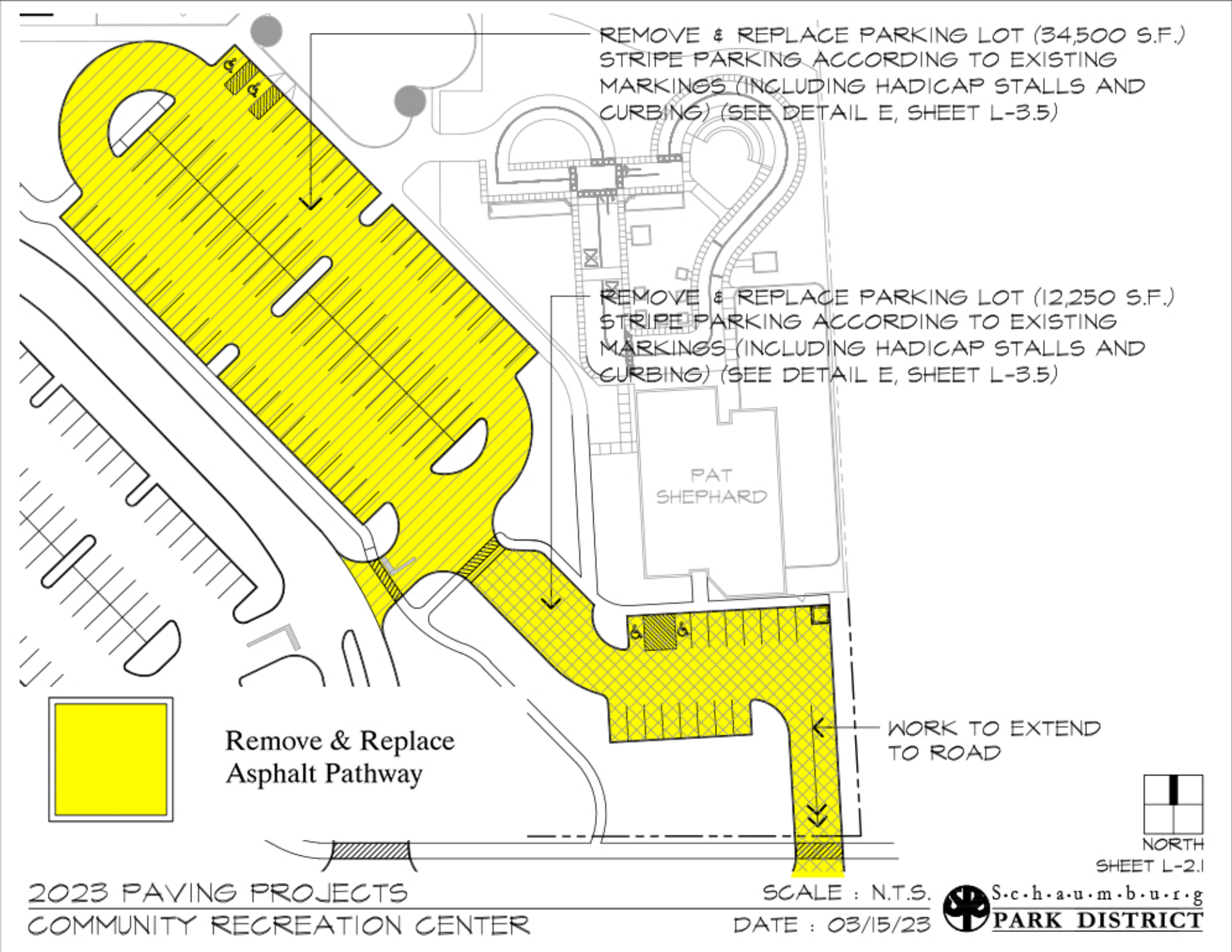
SHEET L-2.12

2022 PAVING PROJECTS
CAMPANELLI PARK

SCALE : N.T.S.
DATE : 04/20/22

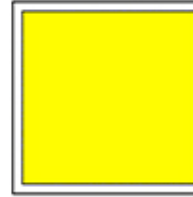


S.c.h.a.u.m.b.u.r.g
PARK DISTRICT



WILLIAMSBURG DRIVE

PAUL REVERE PARK



Remove & Replace Asphalt Pathway

GRIND EXISTING ASPHALT SURFACING, GRADE AND COMPACT BASE, INSTALL ONE 3" LIFT OF SURFACING (SEE DETAIL C, SHEET L-3.3) (2,900 S.F.)

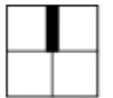
GRIND EXISTING ASPHALT SURFACING, GRADE AND COMPACT BASE, INSTALL ONE 3" LIFT OF SURFACING (SEE DETAIL C, SHEET L-3.3) (4,300 S.F.)

10'

6'

10'

VETERANS PARK



NORTH

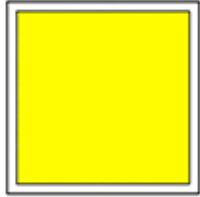
SHEET L-2.2

2023 PAVING PROJECTS
VETERANS & PAUL REVERE PARK

SCALE : N.T.S.
DATE : 03/15/23



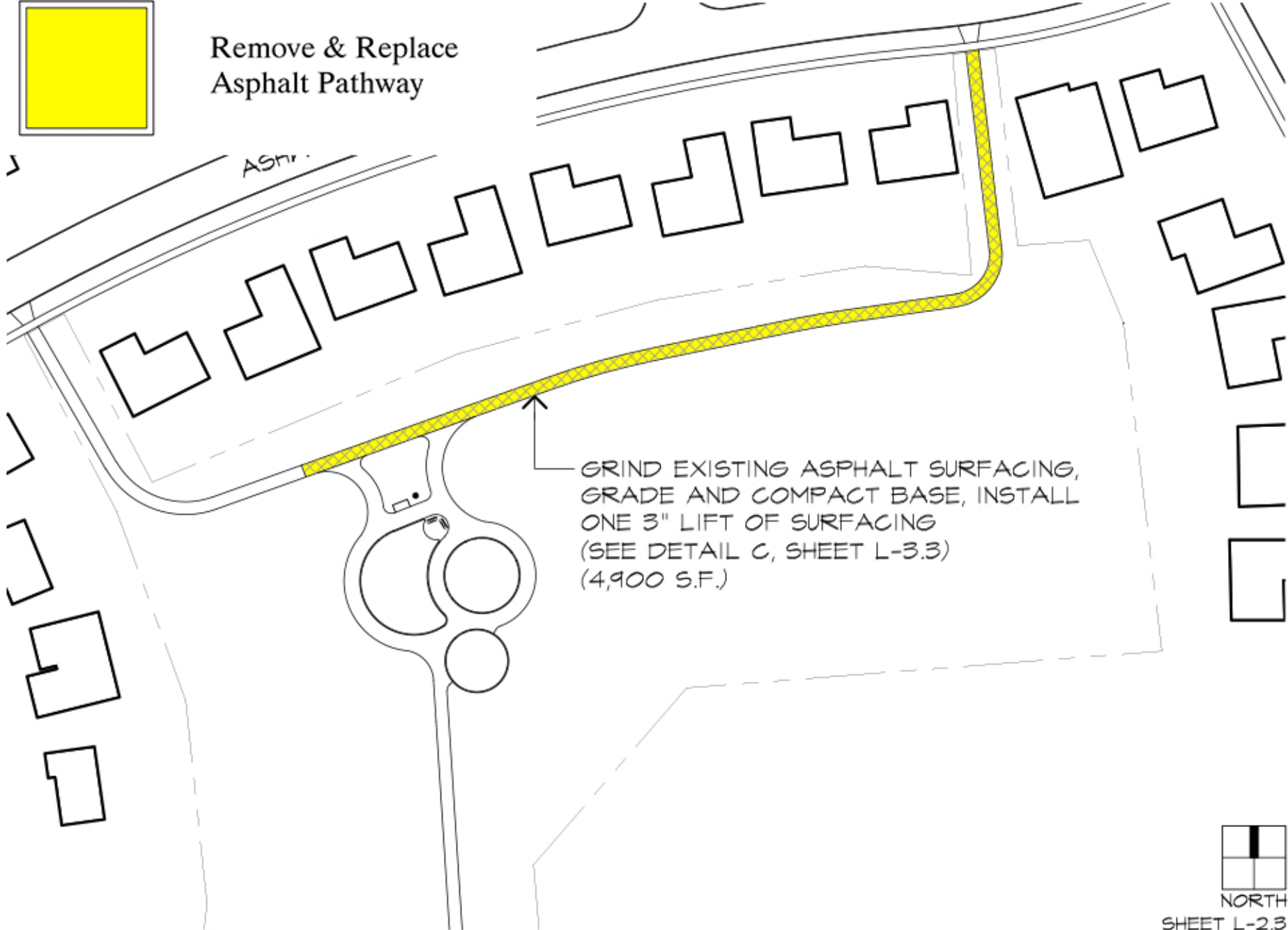
S.c.h.a.u.m.b.u.r.g
PARK DISTRICT



Remove & Replace
Asphalt Pathway

3

ASPH.



GRIND EXISTING ASPHALT SURFACING,
GRADE AND COMPACT BASE, INSTALL
ONE 3" LIFT OF SURFACING
(SEE DETAIL C, SHEET L-3.3)
(4,900 S.F.)



NORTH

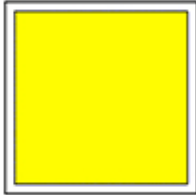
SHEET L-2.3

2023 PAVING PROJECTS
WOODSTOCK PARK

SCALE : N.T.S.
DATE : 03/15/23



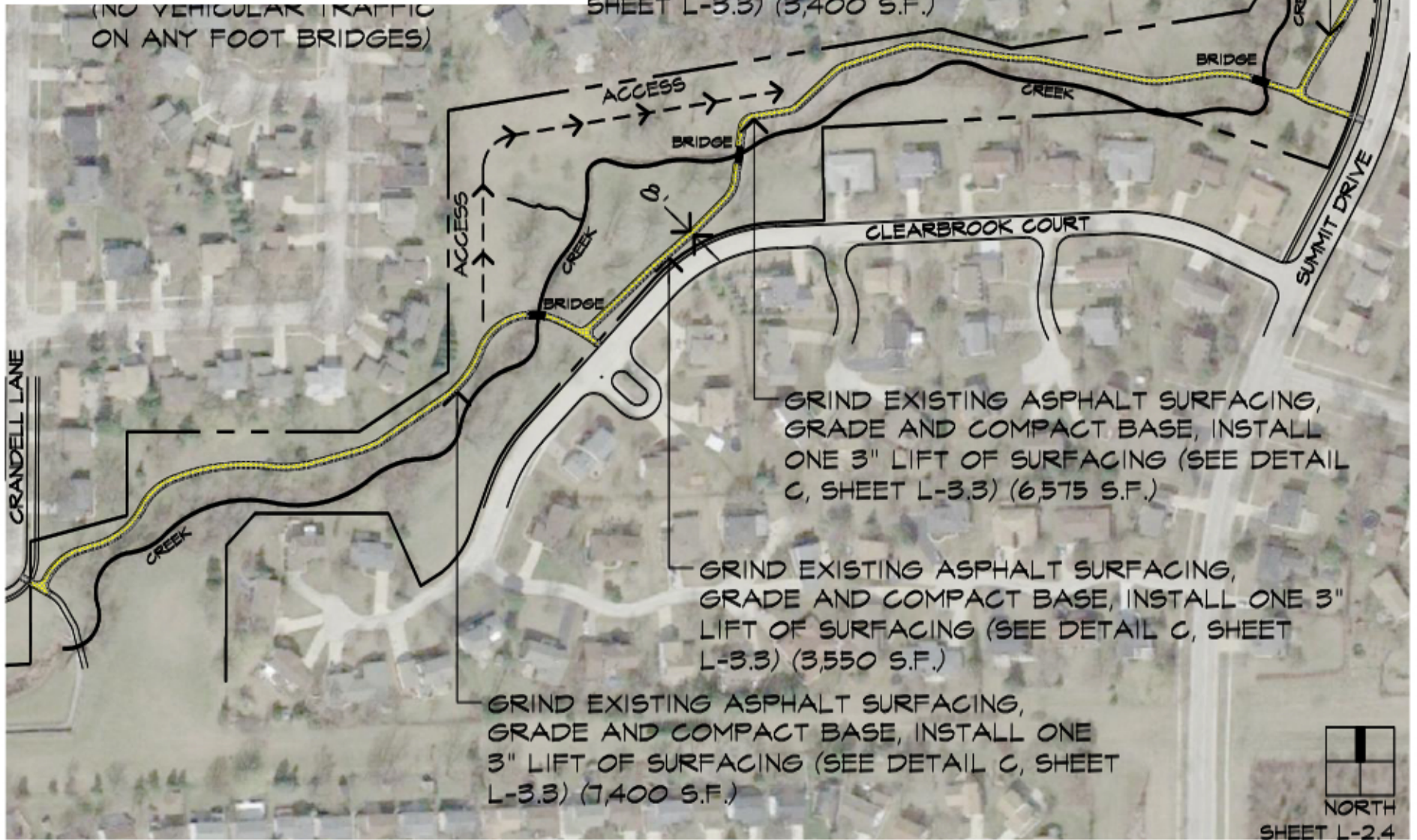
S.c.h.a.u.m.b.u.r.g
PARK DISTRICT



Remove & Replace
Asphalt Pathway

GRIND EXISTING ASPHALT SURFACING,
GRADE AND COMPACT BASE, INSTALL ONE
3" LIFT OF SURFACING (SEE DETAIL C,
SHEET L-3.3) (3,400 S.F.)

(NO VEHICULAR TRAFFIC
ON ANY FOOT BRIDGES)



GRIND EXISTING ASPHALT SURFACING,
GRADE AND COMPACT BASE, INSTALL
ONE 3" LIFT OF SURFACING (SEE DETAIL
C, SHEET L-3.3) (6,575 S.F.)

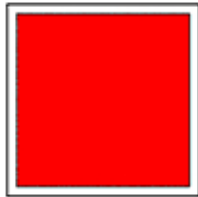
GRIND EXISTING ASPHALT SURFACING,
GRADE AND COMPACT BASE, INSTALL ONE 3"
LIFT OF SURFACING (SEE DETAIL C, SHEET
L-3.3) (3,550 S.F.)

GRIND EXISTING ASPHALT SURFACING,
GRADE AND COMPACT BASE, INSTALL ONE
3" LIFT OF SURFACING (SEE DETAIL C, SHEET
L-3.3) (7,400 S.F.)

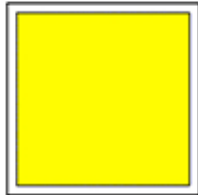


NORTH
SHEET L-2.4

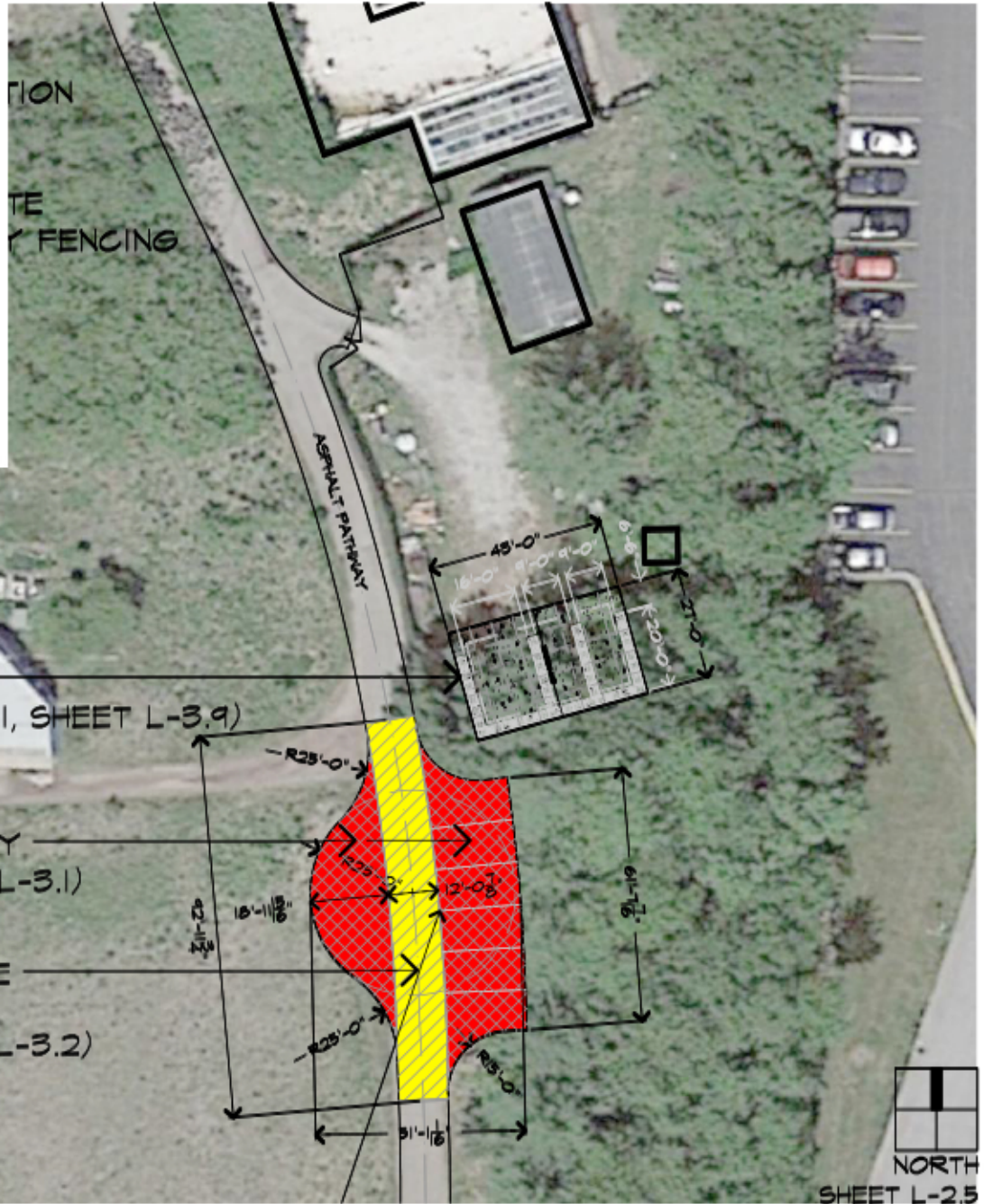




New Asphalt Pathway



Remove & Replace
Asphalt Pathway



2023 PAVING PROJECTS
SPRING VALLEY NATURE CENTER

SCALE : N.T.S.
DATE : 03/15/23



S.c.h.a.u.m.b.u.r.g
PARK DISTRICT

Project Type (From Above)	Project Category (From Above)	Media File #/Name	Project Category Cost	ADA Portion of Project Category Cost	% ADA Dollars Requested
Routes and Surfaces	Maintenance	005_Apollo Park	48500	24250	50.00%
Routes and Surfaces	Maintenance	006_Gray Farm Park	11500	11500	100.00%
Routes and Surfaces	Maintenance	007_601 Morse	96800	48400	50.00%
Routes and Surfaces	Maintenance	008_Timbercrest Park	123500	61750	50.00%
Routes and Surfaces	Maintenance	009_Timbercrest Park	9500	4750	50.00%
Routes and Surfaces	Maintenance	010_CRC	6500	3250	50.00%
Routes and Surfaces	Maintenance	011_Campanelli Park	9500	4750	50.00%
Routes and Surfaces	Maintenance	012_CRC	95500	47750	50.00%
Routes and Surfaces	Maintenance	013_Veterans & Paul Rev	25800	12900	50.00%
Routes and Surfaces	Maintenance	014_Woodstock	18000	9000	50.00%
Routes and Surfaces	Maintenance	015_Lancer Creek	83800	41900	50.00%
Routes and Surfaces	Maintenance	016_Spring Valley	21000	10500	50.00%
Routes and Surfaces	Maintenance	017_Hoover Park	2000	1000	50.00%
Routes and Surfaces	Maintenance	018_Campanelli Park	17500	8750	50.00%
Routes and Surfaces	Maintenance	019_Timbercrest Park	2000	1000	50.00%

#VALUE!
#DIV/0!
#VALUE!
#DIV/0!
#DIV/0!
#DIV/0!

Total Project Cost	571400
Total ADA Portion of Project Cost	291450
Total % of ADA Dollars Requested	51.01%