



Step-by-Step Painting “Owl on Branch”

<https://stepbysteppainting.net/2017/09/04/how-to-paint-an-owl/>

Materials:

- Finished Painting Model
- Tabletop easels
- Acrylic Paints
 - Red
 - Orange
 - Yellow
 - Purple
 - Black
 - White
- Canvas for each participant
- Paint brushes
 - Medium brushes (for each participant)
 - Angles brushes (for each participant)
- Paper plate (for tracing)
- Pencils or crayons
- Water
- Water cups
- Palettes (paper plates) for paint
- Paper towels or towels for wiping brushes

Step by Step Painting Directions (with pictures):

1. Trace a circle for the moon & yellow ring
 - a. Place paper plate in middle of canvas and trace lightly with pencil



2. Paint the circle you just traced with a yellow ring about 1" thick.



- a.
3. Paint a 1" orange ring around the yellow ring



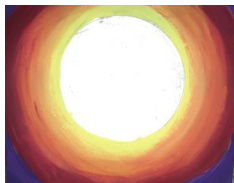
- a.
4. Blend the colors
 - a. You can use a wet brush or mix orange and yellow on your palette to mix in between



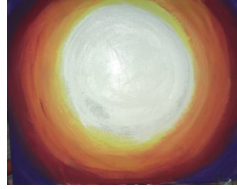
- b.
5. Paint a red ring around the orange ring



- a.
 - b. Follow the blending instructions and blend orange to red
6. Paint the rest of the outside of the canvas purple
 - a. Not the middle white circle
 - b. Follow the blending instructions and blend red to purple



- c.
7. Paint the moon white
 - a. Keep your strokes circular

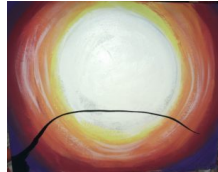


- b.
- 8. Paint moonbeams
 - a. Use a wet or dry brush (and white paint) to add dimension around the moon
 - b. Use a "C" shape to highlight the rings



- c.
- 9. Before moving on to the next step, allow time for the paint to dry as much as possible.
 - a. This will prevent smudging and unintended blending.
 - b. Use this time for a bathroom break, snack break, etc.

- 10. Paint the tree branch
 - a. Use an angled brush (and black paint) to paint a tree branch across the canvas
 - b. Start in the lower left hand corner
 - c. Branch should start wider and gradually thin



- d.
- e. Continue by adding branches stemming off (less is more)



f.



g.

- 11. Paint the Owl
 - a. Start by painting two arc lines for the body of the owl



- b.
- c. Add a circle for the head and add catlike ears



d.

e. Fill in the body with black and add a small bump for a tail



f.

12. They can add leaves to branches or additional details if desired

a. If not, have participants put initials in the corner of the canvas

Program Directions:

1. Before participants arrive, set up tables and tabletop easels for each participant
2. Set up each place with materials
 - a. Easel
 - b. Canvas
 - c. Two paintbrushes (medium and angled)
 - d. Cup of water
 - e. Paper plate with paint
 - i. Small amounts of colors (teaspoon)
 - ii. Maybe tablespoon worth of black and white
 - f. Smaller paper plate for tracing (this could be shared amongst table)
 - g. Pencil/crayon (for tracing)
 - h. Paper towels or towels for wiping brush off
 - i. Aprons/smocks if desired
3. If you feel your group needs it, you could pass out colors one at a time (as needed)
4. Program leader should be set up at the front of the room so they are visible to all participants.
 - a. Other staff members/volunteers should be rotating room and helping participants as needed (refilling materials, assisting with painting, clean up, bathroom breaks, etc.)
 - b. In between steps program leader should walk around and make sure all participants are on the same step
5. Do not move on to next step until all participants are caught up
6. Instruct participants to watch before they try
7. Once participants are done, have a plan in place for their finished paintings (will they remain on easels, will they be moved to a table, will they be dry in time for participants to take home that day or will they be returned next week)
- 8.

Leadership Considerations:

- Take participant mobility and level of functioning into consideration.
 - Do tables need to be taller or shorter
 - Will participants need adaptive equipment to be successful
 - Should canvasses be laid flat on table or put on easels
 - Will any participants need hand over hand assistance
 - Will substances like paint or sharp utensils like pencils be problematic for any of your participants