



Keep in Mind

Information in the following report was pulled from the most current data available. This data represented is from the U.S. Census along with the American Community Survey (ACS).

Total Population vs Population with Disabilities

40,679

Total Population

2,963

Population with Disabilities

Population with Disabilities that NWSRA serves in Buffalo Grove

Based on the latest information, SRAs have reported on average that they have served **.55% of the total population**

.55% of Total Population

224

Population NWSRA serves

227

Children with Disabilities vs. CDC National Averages



17%

CDC National Average for **Children** with Disabilities

2%

Buffalo Grove Children with Disabilities

Adults with Disabilities vs. CDC National Averages



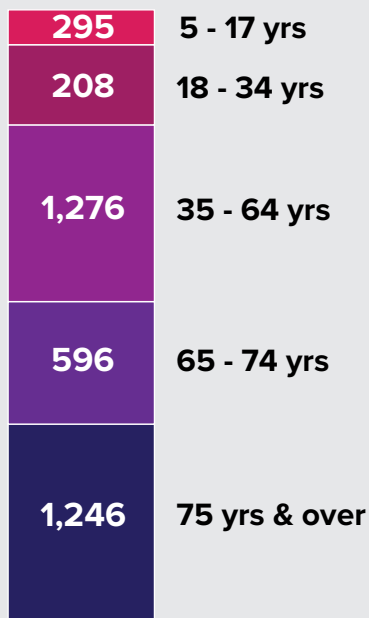
26%

CDC National Average for **Adults** with Disabilities

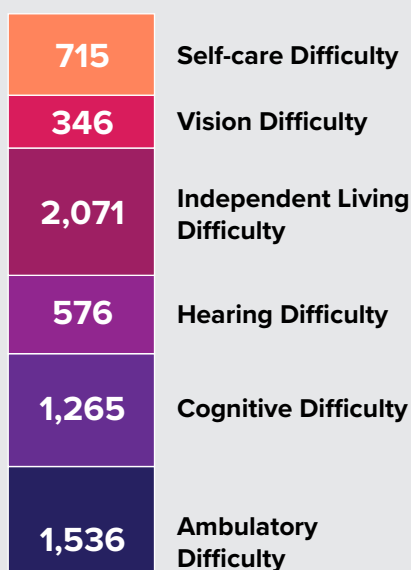
1%

Buffalo Grove Adults with Disabilities

Disability Population by Age



Population by Disability



Keep in Mind

The questions introduced in 2008 pertaining to disabilities remain the same questions found in the current ACS questionnaires. They cover six disability types:

- **Hearing difficulty** deaf or having serious difficulty hearing
- **Vision difficulty** blind or having serious difficulty seeing, even when wearing glasses
- **Cognitive difficulty** Because of a physical, mental, or emotional problem, having difficulty remembering, concentrating, or making decisions
- **Ambulatory difficulty** Having serious difficulty walking or climbing stairs
- **Self-care difficulty** Having difficulty bathing or dressing
- **Independent living difficulty** Because of a physical, mental, or emotional problem, having difficulty doing errands alone such as visiting a doctor's office or shopping

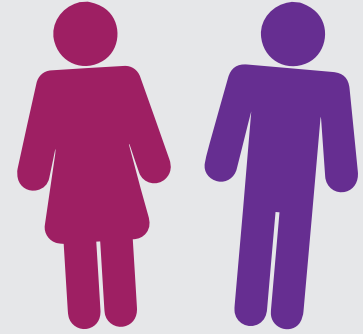
Respondents who report anyone of the six disability types are considered to have a disability in the eyes of ACS data

Total vs. Disability Population by Sex

Total Population: 40,679

19,224
Male

21,455
Female



Disability Population: 2,963

1,348
Male

1,615
Female



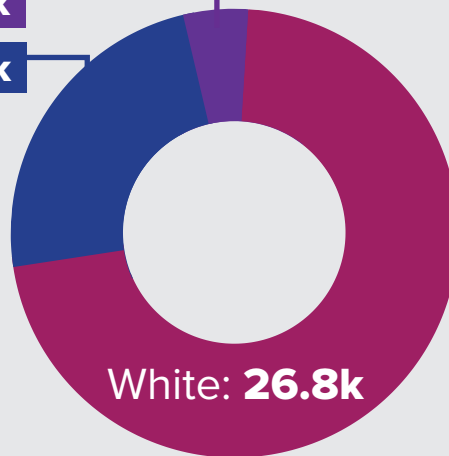
Keep in Mind

The American Community Survey includes a question that intends to capture current sex; there are no questions about gender, sexual orientation, or sex at birth. Respondents should respond either "male" or "female" based on how they currently identify their sex.

Ethnic Population

Hispanic: 1.75k

Asian: 8.87k



3 Largest Ethnic
Groups in
Buffalo Grove

Veteran Population: 770

4.2%

Veteran National Average

Buffalo
Grove
Average

1.9%



3 Most Common Veteran Groups

