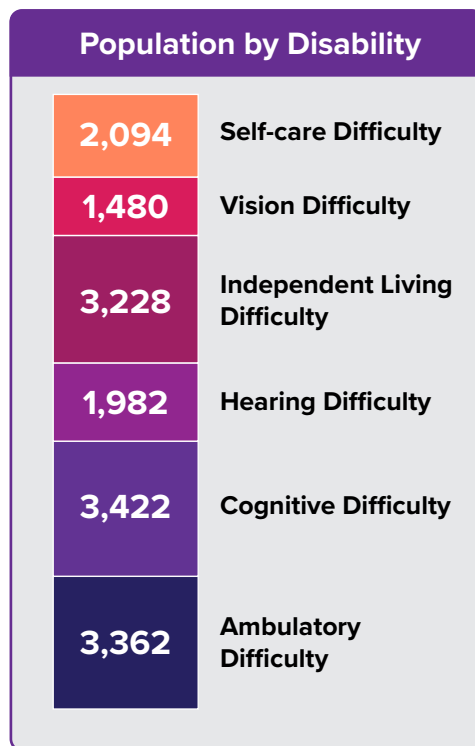
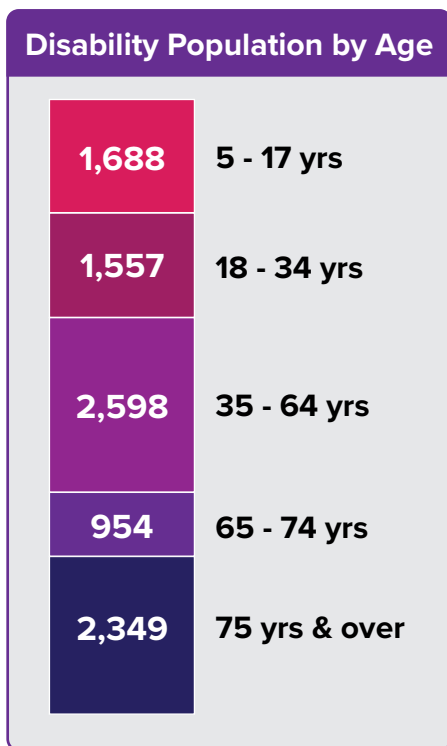
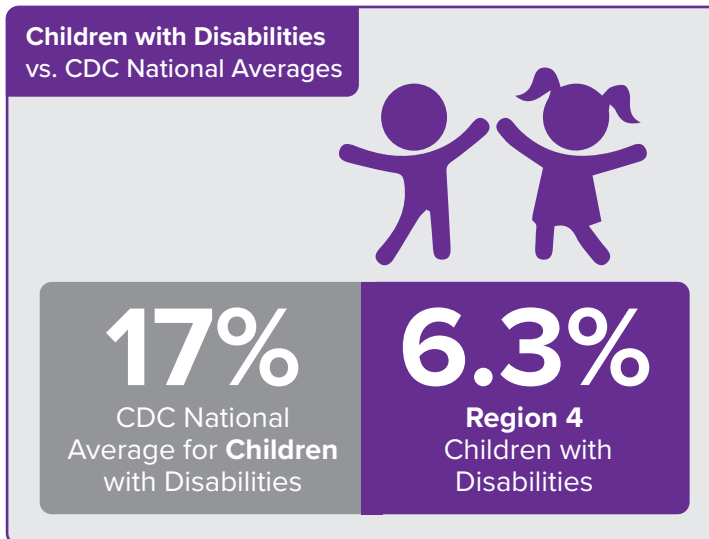
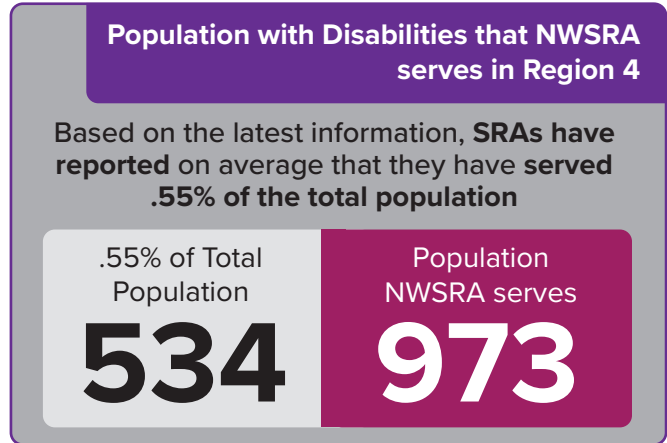
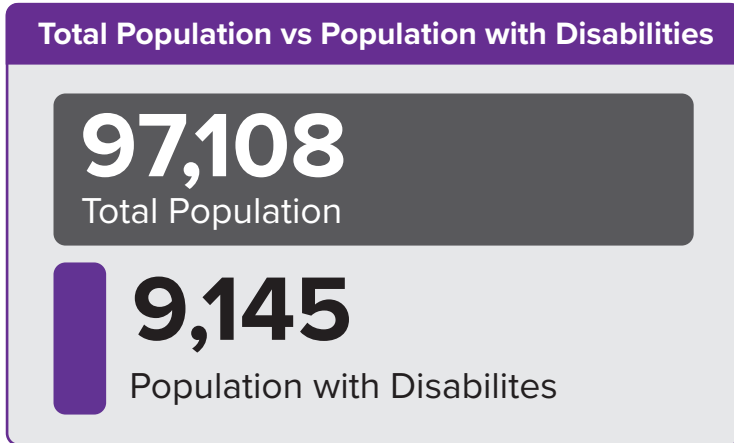




**Keep in Mind**

Information in the following report was pulled from the most current data available. This data represented is from the U.S. Census along with the American Community Survey (ACS).



**Keep in Mind**

The questions introduced in 2008 pertaining to disabilities remain the same questions found in the current ACS questionnaires. They cover six disability types:

- **Hearing difficulty** deaf or having serious difficulty hearing
- **Vision difficulty** blind or having serious difficulty seeing, even when wearing glasses
- **Cognitive difficulty** Because of a physical, mental, or emotional problem, having difficulty remembering, concentrating, or making decisions
- **Ambulatory difficulty** Having serious difficulty walking or climbing stairs
- **Self-care difficulty** Having difficulty bathing or dressing
- **Independent living difficulty** Because of a physical, mental, or emotional problem, having difficulty doing errands alone such as visiting a doctor's office or shopping

Respondents who report anyone of the six disability types are considered to have a disability in the eyes of ACS data

## Total vs. Disability Population by Sex

Total Population: 97,108

48,040  
Male

49,067  
Female



Disability Population: 9,145

3,997  
Male

5,153  
Female



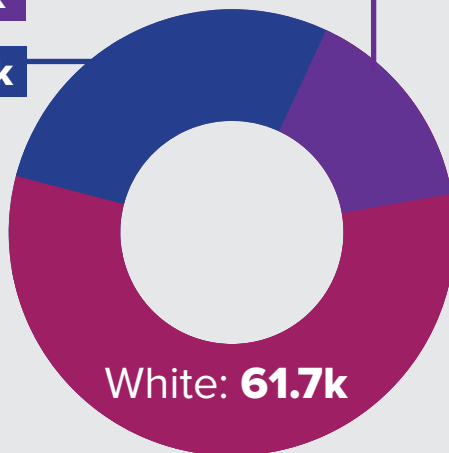
### Keep in Mind

The American Community Survey includes a question that intends to capture current sex; there are no questions about gender, sexual orientation, or sex at birth. Respondents should respond either "male" or "female" based on how they currently identify their sex.

## Ethnic Population

Asian: 11.5k

Hispanic: 15.6k



3 Largest Ethnic  
Groups in  
Region 4

Veteran Population: 2,247

4.2%

Veteran National Average

Region 4  
Average

2.4%



### 3 Most Common Veteran Groups

1,122

Vietnam

353

Gulf War  
(2001-)

281

Korea