

Title	Colony Lake Park, Meineke Park, and Russ Parker Park	11/29/2023
	by Todd King in Member District ADA Project Request	id. 44814160
	235 East Beech Drive Schaumburg, Illinois 60193 United States 847 985 2115 parksfacilities@parkfun.com	

Original Submission	11/29/2023
----------------------------	------------

Score	n/a
Name	Todd King
Job Title	Director of Parks and Planning
E-mail Address	tking@parkfun.com
Phone Number	847.985.2115
Park District	Schaumburg
Project Location	Colony Lake Park, Meineke Park, and Russ Parker Park
Project Status	Alteration
Project Type	Routes and Surfaces Recreation Facilities and Amenities
Recreation Facilities and Amenities- select a Project Category below:	Playgrounds- Play Components Benches- Picnic Tables
Routes and Surfaces- select a Project Category below:	Walking Surfaces Play Surfaces Curb Ramps
Benefits of the Project	As per the Schaumburg Park Districts master plan playground renovations are scheduled when equipment, surfacing, and amenities begin to become more difficult to maintain properly and provide a safe and accessible play experience. The scope of work involved the removal and replacement of playground equipment, safety surfacing, drainage, select concrete curbing, select pathways, and the installation of new seating areas.

Items that will become ADA Compliant	Playground Equipment, Safety Surfacing, Walking Surfaces, and Seating Areas
--------------------------------------	---

The project is designed or constructed, or applies human resources, to comply with:	ASTM F 1951 Standard for Accessible Playground Surfaces The 2013 Final Guideline for Outdoor Developed Areas Owned and Operated by the Federal Government
---	--

Upload Project Related Files, Photos, Videos or Audio

[001_Colony_Lake_Site_Plan_11.27.23.pdf](#)

[002_Meineke_Site_Plan_11.27.23.pdf](#)

[003_Russ_Parker_Site_Plan_11.27.23.pdf](#)

[004_CRC_11.20.23.pdf](#)



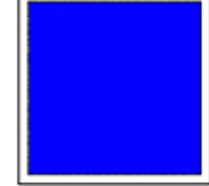



Budget Table for ADA Related Expenses

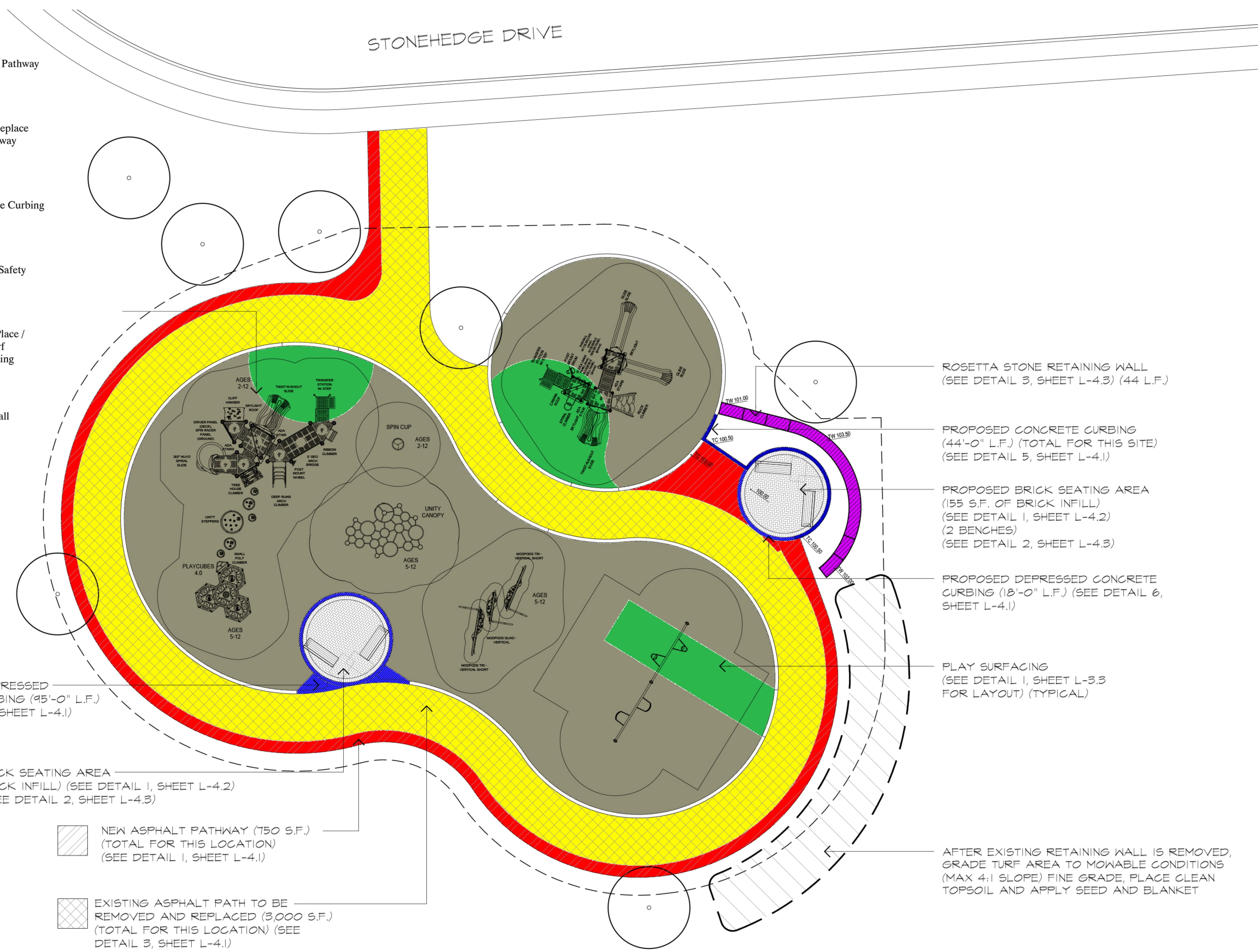
[Budget Table.xlsx](#)

ADA Dollars Requested	1200088.8
-----------------------	-----------


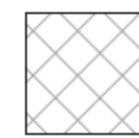
Notes related to requested amount

- NOTES
- ◆ EXISTING GRADE
 - + PROPOSED GRADE
 - CONSTRUCTION LIMITS
 - ✕ TREE PROTECTION FENCING
 - BM BENCH MARK (BASE OF SECURITY LIGHT)
 - T.C. TOP OF CURB
 - B.C. BOTTOM OF CURB
 - T.W. TOP OF WALL
 - B.W. BOTTOM OF WALL

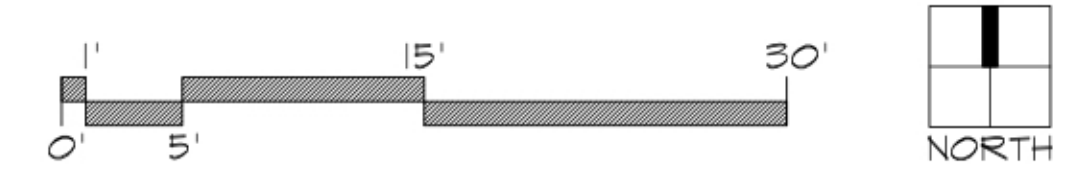
-  New Asphalt Pathway
-  Remove & Replace Asphalt Pathway
-  New Concrete Curbing
-  Wood Fiber Safety Surfacing
-  Poured -in- Place / Artificial Turf Safety Surfacing
-  Retaining Wall



- ROSETTA STONE RETAINING WALL (SEE DETAIL 3, SHEET L-4.3) (44 L.F.)
- PROPOSED CONCRETE CURBING (44'-0" L.F.) (TOTAL FOR THIS SITE) (SEE DETAIL 5, SHEET L-4.1)
- PROPOSED BRICK SEATING AREA (155 S.F. OF BRICK INFILL) (2 BENCHES) (SEE DETAIL 2, SHEET L-4.3)
- PROPOSED DEPRESSED CONCRETE CURBING (18'-0" L.F.) (SEE DETAIL 6, SHEET L-4.1)
- PLAY SURFACING (SEE DETAIL 1, SHEET L-3.3 FOR LAYOUT) (TYPICAL)
- AFTER EXISTING RETAINING WALL IS REMOVED, GRADE TURF AREA TO MOWABLE CONDITIONS (MAX 4:1 SLOPE) FINE GRADE, PLACE CLEAN TOPSOIL AND APPLY SEED AND BLANKET

- PROPOSED DEPRESSED CONCRETE CURBING (15'-0" L.F.) (SEE DETAIL 6, SHEET L-4.1)
- PROPOSED BRICK SEATING AREA (155 S.F. OF BRICK INFILL) (SEE DETAIL 1, SHEET L-4.2) (2 BENCHES) (SEE DETAIL 2, SHEET L-4.3)
-  NEW ASPHALT PATHWAY (750 S.F.) (TOTAL FOR THIS LOCATION) (SEE DETAIL 1, SHEET L-4.1)
-  EXISTING ASPHALT PATH TO BE REMOVED AND REPLACED (3,000 S.F.) (TOTAL FOR THIS LOCATION) (SEE DETAIL 3, SHEET L-4.1)

ISSUED FOR BID	05.18.22
DESCRIPTION	DATE
2022 PLAYGROUND PROJECTS	
COLONY LAKE PARK	
1082 STONEHEDGE DRIVE SCHAUMBURG IL, 60194	
DATE	MAY 18th, 2022
SCALE	1/8" = 1'-0"
DRAWN BY	MG
APPROVED BY	TK



- NOTES
- + EXISTING GRADE
 - + PROPOSED GRADE
 - - - CONSTRUCTION LIMITS
 - ✕ TREE PROTECTION FENCING
 - BM BENCH MARK (BASE OF SECURITY LIGHT)
 - T.C. TOP OF CURB
 - B.C. BOTTOM OF CURB
 - T.W. TOP OF WALL
 - B.W. BOTTOM OF WALL

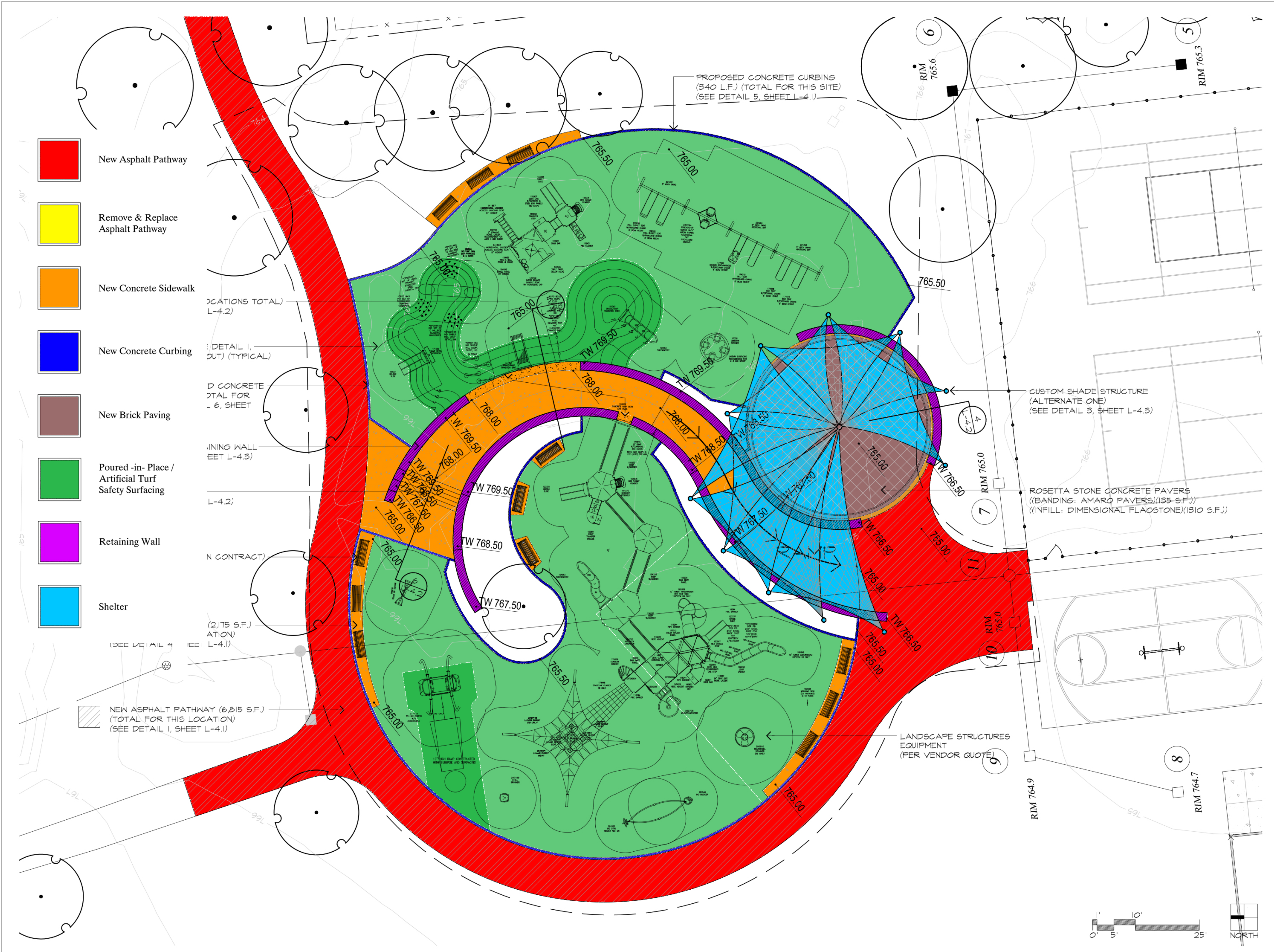
ISSUED FOR BID 06.24.22
 DESCRIPTION DATE

MEINEKE PLAYGROUND RENOVATION

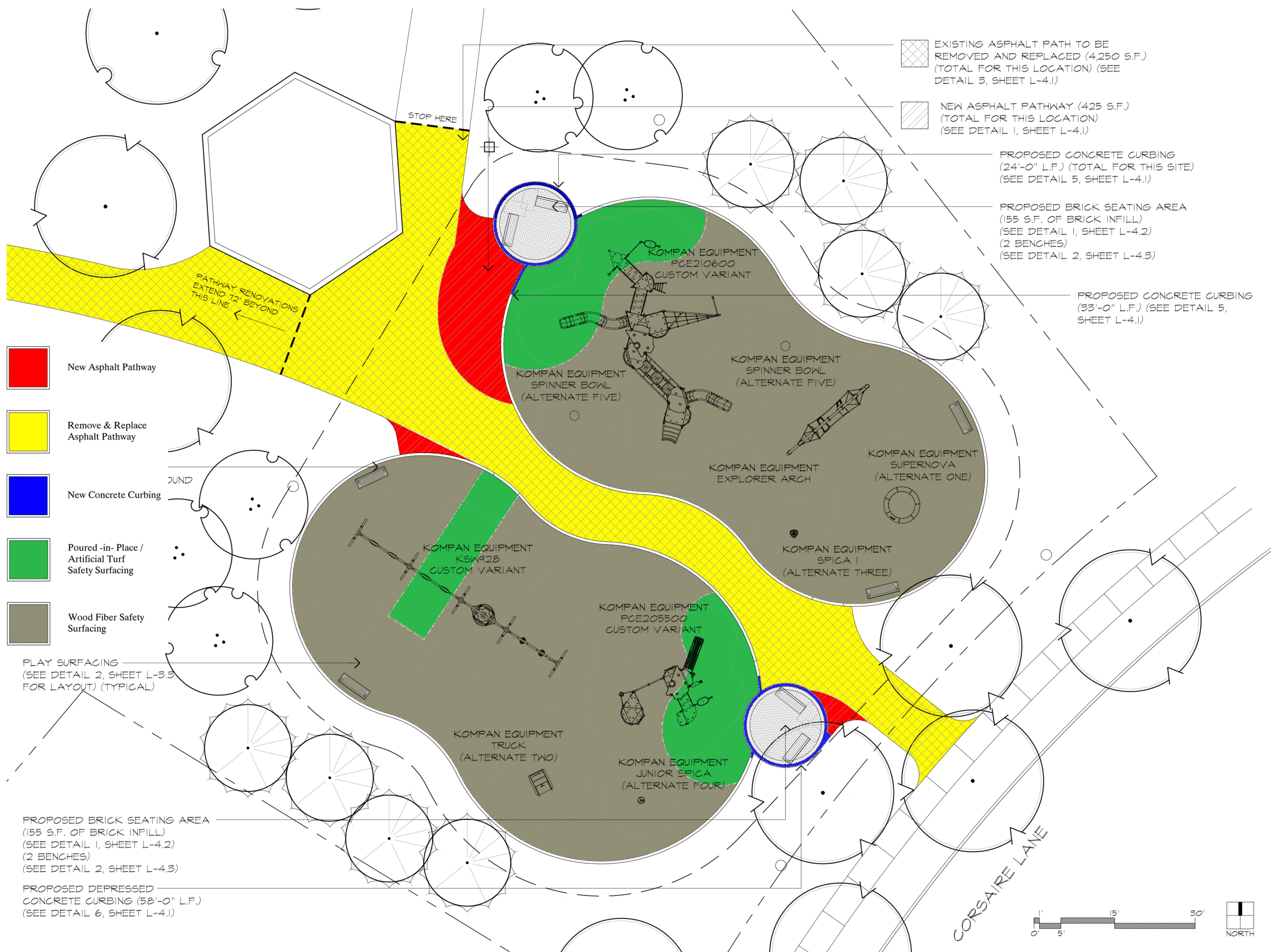
MEINEKE PARK
 220 E. WEATHERSFIELD WAY
 SCHAUMBURG IL, 60193

DATE JUNE 24th, 2022
 SCALE 1" = 10'
 DRAWN BY MG
 APPROVED BY TK

SITE PLAN
 SHEET TITLE
L - 2.1
 SHEET NUMBER



- NOTES
- + EXISTING GRADE
 - + PROPOSED GRADE
 - - - CONSTRUCTION LIMITS
 - ✕ TREE PROTECTION FENCING
 - BM BENCH MARK (BASE OF SECURITY LIGHT)
 - T.C. TOP OF CURB
 - B.C. BOTTOM OF CURB
 - T.W. TOP OF WALL
 - B.W. BOTTOM OF WALL



- EXISTING ASPHALT PATH TO BE REMOVED AND REPLACED (4,250 S.F.) (TOTAL FOR THIS LOCATION) (SEE DETAIL 3, SHEET L-4.1)
- NEW ASPHALT PATHWAY (425 S.F.) (TOTAL FOR THIS LOCATION) (SEE DETAIL 1, SHEET L-4.1)
- PROPOSED CONCRETE CURBING (24'-0" L.F.) (TOTAL FOR THIS SITE) (SEE DETAIL 5, SHEET L-4.1)
- PROPOSED BRICK SEATING AREA (155 S.F. OF BRICK INFILL) (SEE DETAIL 1, SHEET L-4.2) (2 BENCHES) (SEE DETAIL 2, SHEET L-4.3)
- PROPOSED CONCRETE CURBING (33'-0" L.F.) (SEE DETAIL 5, SHEET L-4.1)

- New Asphalt Pathway
- Remove & Replace Asphalt Pathway
- New Concrete Curbing
- Poured -in- Place / Artificial Turf Safety Surfacing
- Wood Fiber Safety Surfacing

PLAY SURFACING (SEE DETAIL 2, SHEET L-3.3 FOR LAYOUT) (TYPICAL)

PROPOSED BRICK SEATING AREA (155 S.F. OF BRICK INFILL) (SEE DETAIL 1, SHEET L-4.2) (2 BENCHES) (SEE DETAIL 2, SHEET L-4.3)

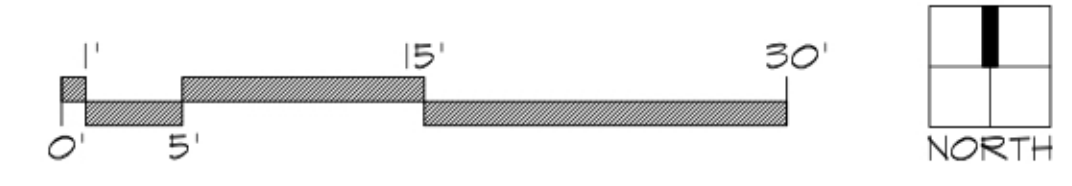
PROPOSED DEPRESSED CONCRETE CURBING (58'-0" L.F.) (SEE DETAIL 6, SHEET L-4.1)

PATHWAY RENOVATIONS EXTEND 12' BEYOND THIS LINE

STOP HERE

BUND

CORSAIRE LANE



ISSUED FOR BID	05.18.22
DESCRIPTION	DATE

2022 PLAYGROUND PROJECTS

RUSS PARKER PARK
 301 NATIONAL PARKWAY
 SCHAUMBURG IL, 60173

DATE	MAY 18th, 2022
SCALE	1/8" = 1'-0"
DRAWN BY	MG
APPROVED BY	TK

SITE PLAN
 SHEET TITLE
L - 2.2
 SHEET NUMBER

NOTES

- ± EXISTING GRADE
- + PROPOSED GRADE
- CONSTRUCTION LIMITS
- 6' CHAIN LINK FENCING (TEMPORARY)
- *— TREE PROTECTION FENCING
- BM BENCH MARK (BASE OF SECURITY LIGHT)
- T.C. TOP OF CURB
- B.C. BOTTOM OF CURB
- T.W. TOP OF WALL
- B.W. BOTTOM OF WALL

GENERAL NOTE:
 CONTRACTOR WILL BE RESPONSIBLE FOR BRINGING IN CLEAN FILL MATERIAL/TOPSOIL AS NEEDED TO RESTORE AREAS. (ESPECIALLY IN AREAS WHERE EXISTING PLAYGROUND WAS REMOVED AND PROPOSED LAYOUT CALLS FOR TURF OR LANDSCAPE AREA)

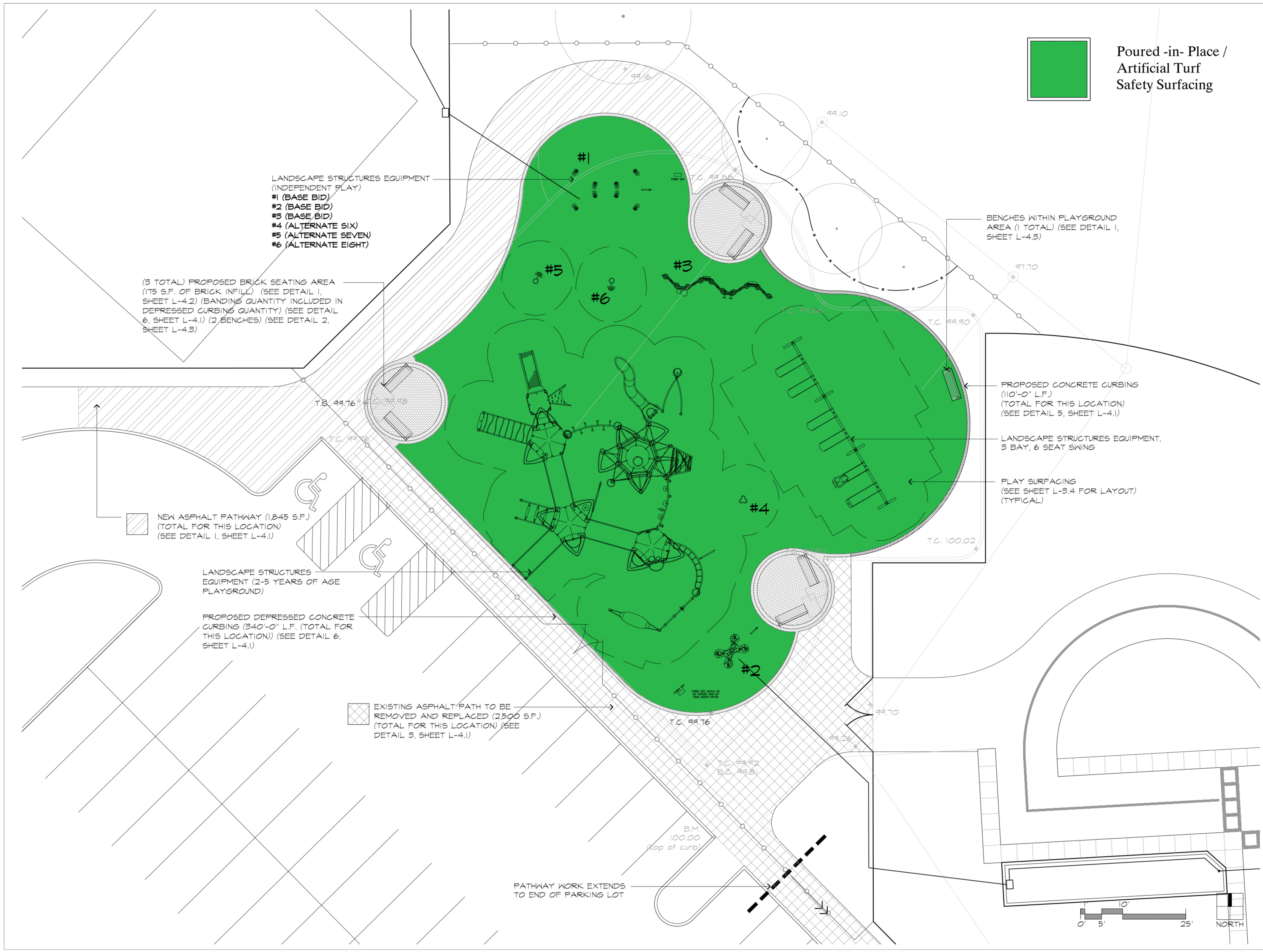
 TURF AREAS

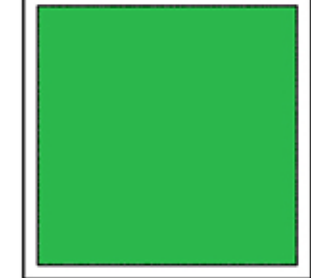
DESCRIPTION	DATE
ISSUED FOR REVIEW	04.01.14
ISSUED FOR BID	04.17.14

2014 PLAYGROUND PROJECTS
COMMUNITY RECREATION CENTER
 505 N. SPRINGSGUTH ROAD
 SCHAUMBURG IL, 60194

DATE	APRIL 17, 2014
SCALE	1/8" = 1'-0"
DRAWN BY	MG
APPROVED BY	TK


SITE PLAN
 SHEET TITLE
L - 2.1
 SHEET NUMBER



 Poured-in-Place / Artificial Turf Safety Surfacing


LANDSCAPE STRUCTURES EQUIPMENT (INDEPENDENT PLAY)
 #1 (BASE BID)
 #2 (BASE BID)
 #3 (BASE BID)
 #4 (ALTERNATE SIX)
 #5 (ALTERNATE SEVEN)
 #6 (ALTERNATE EIGHT)

(3 TOTAL) PROPOSED BRICK SEATING AREA (175 S.F. OF BRICK INFILL) (SEE DETAIL 1, SHEET L-4.2) (BANDING QUANTITY INCLUDED IN DEPRESSED CURBING QUANTITY) (SEE DETAIL 6, SHEET L-4.1) (2 BENCHES) (SEE DETAIL 2, SHEET L-4.3)

 NEW ASPHALT PATHWAY (1,845 S.F.) (TOTAL FOR THIS LOCATION) (SEE DETAIL 1, SHEET L-4.1)

LANDSCAPE STRUCTURES EQUIPMENT (2-5 YEARS OF AGE PLAYGROUND)

PROPOSED DEPRESSED CONCRETE CURBING (340'-0" L.F. (TOTAL FOR THIS LOCATION)) (SEE DETAIL 6, SHEET L-4.1)

 EXISTING ASPHALT PATH TO BE REMOVED AND REPLACED (2,500 S.F.) (TOTAL FOR THIS LOCATION) (SEE DETAIL 3, SHEET L-4.1)

PATHWAY WORK EXTENDS TO END OF PARKING LOT

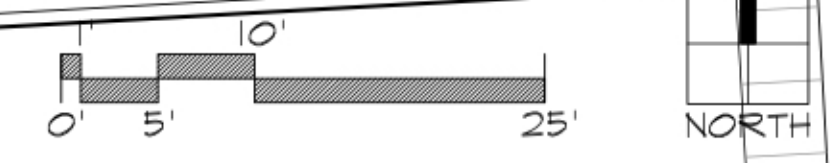
BENCHES WITHIN PLAYGROUND AREA (1 TOTAL) (SEE DETAIL 1, SHEET L-4.3)

PROPOSED CONCRETE CURBING (110'-0" L.F.) (TOTAL FOR THIS LOCATION) (SEE DETAIL 5, SHEET L-4.1)

LANDSCAPE STRUCTURES EQUIPMENT, 3 BAY, 6 SEAT SWING

PLAY SURFACING (SEE SHEET L-3.4 FOR LAYOUT) (TYPICAL)

B.M. 100.00 (top of curb)



Project Type (From ab	Project Category (From Above)	Media File #/Name	Project Category Cost	ADA Portion of Project Catej	% ADA Dollars Requested
Play Surfaces	Recreation Facilities and Amenities	001_Colony_Lake_Site_P	32205	32205	100.00%
Play Surfaces	Recreation Facilities and Amenities	001_Colony_Lake_Site_P	164879.3	65951.72	40.00%
Play Surfaces	Recreation Facilities and Amenities	001_Colony_Lake_Site_P	19500	9750	50.00%
Play Surfaces	Recreation Facilities and Amenities	001_Colony_Lake_Site_P	6750	6750	100.00%
Play Surfaces	Recreation Facilities and Amenities	002_Meineke_Park_Site_	42100	42100	100.00%
Play Surfaces	Recreation Facilities and Amenities	002_Meineke_Park_Site_	225562.92	225562.92	100.00%
Play Surfaces	Recreation Facilities and Amenities	002_Meineke_Park_Site_	475300	285180	60.00%
Play Surfaces	Recreation Facilities and Amenities	002_Meineke_Park_Site_	145900	145900	100.00%
Play Surfaces	Recreation Facilities and Amenities	002_Meineke_Park_Site_	80000	40000	50.00%
Play Surfaces	Recreation Facilities and Amenities	002_Meineke_Park_Site_	26000	26000	100.00%
Play Surfaces	Recreation Facilities and Amenities	002_Meineke_Park_Site_	32800	16400	50.00%
Play Surfaces	Recreation Facilities and Amenities	002_Meineke_Park_Site_	31500	15750	50.00%
Play Surfaces	Recreation Facilities and Amenities	002_Meineke_Park_Site_	34500	34500	100.00%
Play Surfaces	Recreation Facilities and Amenities	003_Russ Parker_Park_Si	49252	49252	100.00%
Play Surfaces	Recreation Facilities and Amenities	003_Russ Parker_Park_Si	190346	76138.41	40.00%
Play Surfaces	Recreation Facilities and Amenities	003_Russ Parker_Park_Si	27625	13812.5	50.00%
Play Surfaces	Recreation Facilities and Amenities	003_Russ Parker_Park_Si	3931.25	3931.25	100.00%
Play Surfaces	Recreation Facilities and Amenities	004_CRC	110905	110905	100.00%
					#VALUE!
					#DIV/0!
					#DIV/0!
	Total Project Cost		1699056.47		
	Total ADA Portion of Project Cost		1200088.8		
	Total % of ADA Dollars Requested		70.63%		