

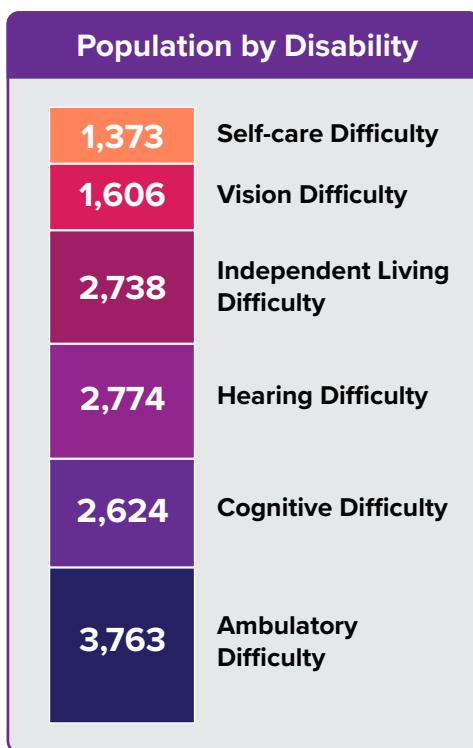
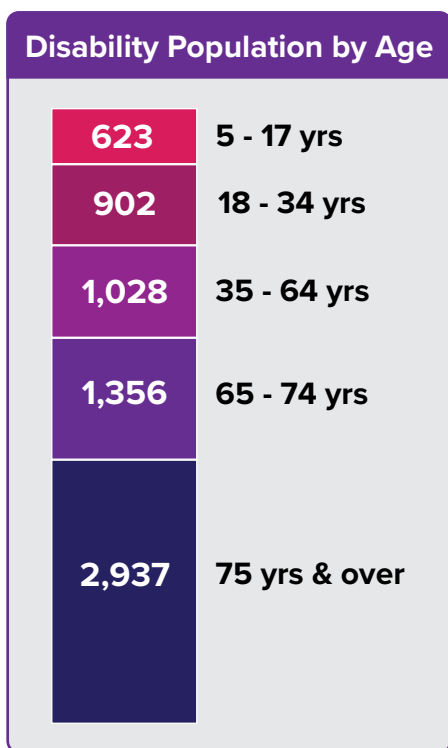
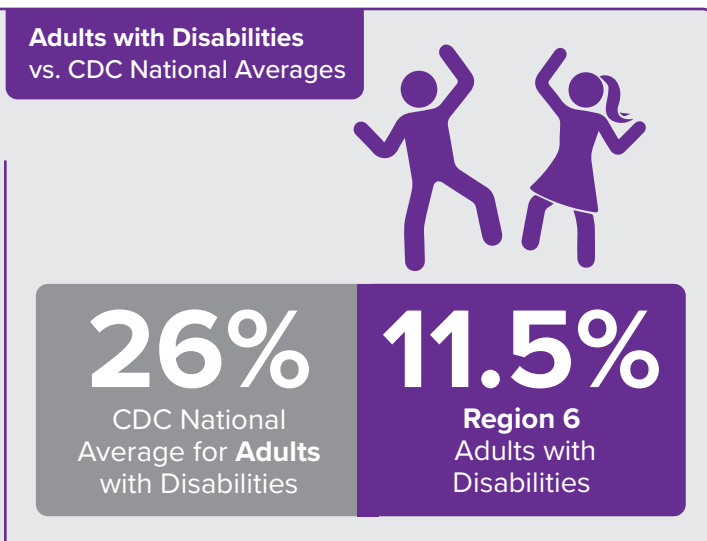
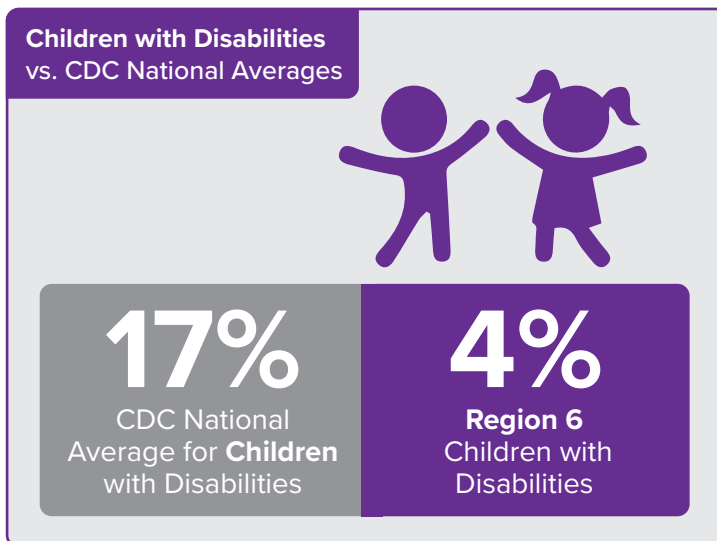
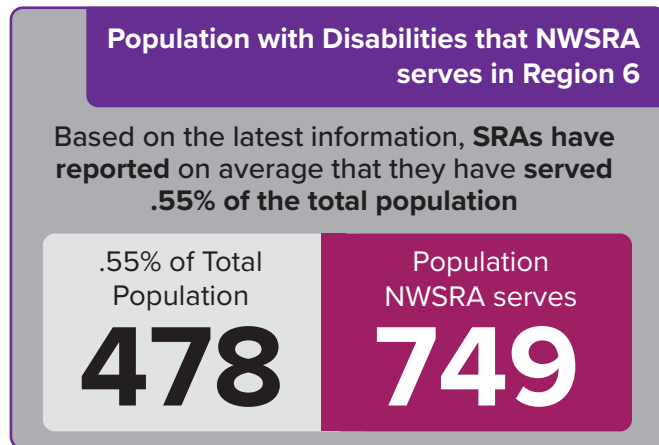
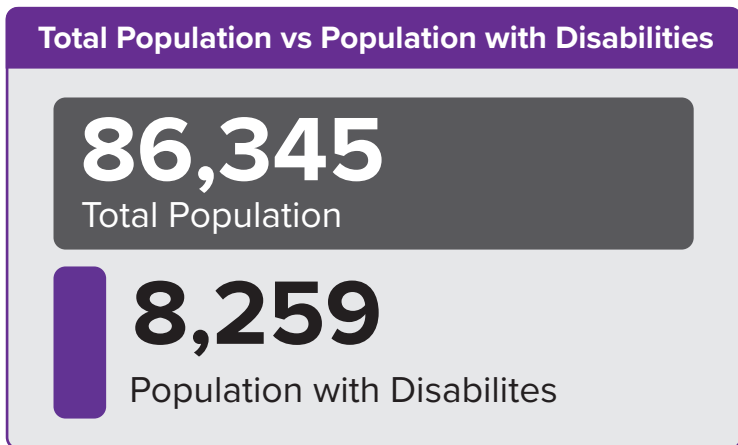
# Region 5: Elk Grove Village & Mt. Prospect Research and Outreach Initiative (ROI) Data

# 2023



## Keep in Mind

Information in the following report was pulled from the most current data available. This data represented is from the U.S. Census along with the American Community Survey (ACS).



## Keep in Mind

The questions introduced in 2008 pertaining to disabilities remain the same questions found in the current ACS questionnaires. They cover six disability types:

- **Hearing difficulty** deaf or having serious difficulty hearing
- **Vision difficulty** blind or having serious difficulty seeing, even when wearing glasses
- **Cognitive difficulty** Because of a physical, mental, or emotional problem, having difficulty remembering, concentrating, or making decisions
- **Ambulatory difficulty** Having serious difficulty walking or climbing stairs
- **Self-care difficulty** Having difficulty bathing or dressing
- **Independent living difficulty** Because of a physical, mental, or emotional problem, having difficulty doing errands alone such as visiting a doctor's office or shopping

Respondents who report anyone of the six disability types are considered to have a disability in the eyes of ACS data

## Total vs. Disability Population by Sex

Total Population: 86,345

42,257  
Male

44,088  
Female



Disability Population: 8,259

3,576  
Male

4,683  
Female



### Keep in Mind

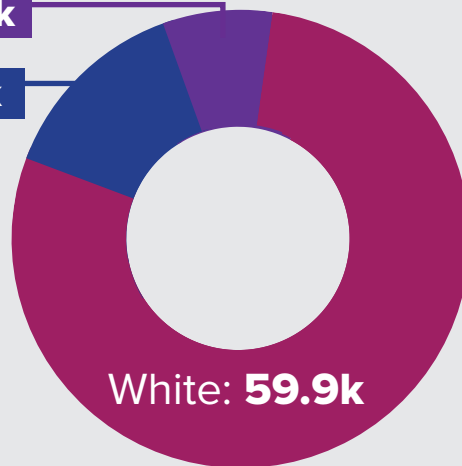
The American Community Survey includes a question that intends to capture current sex; there are no questions about gender, sexual orientation, or sex at birth. Respondents should respond either "male" or "female" based on how they currently identify their sex.

## Ethnic Population

Hispanic: 5.9k

Asian: 10.5k

White: 59.9k



3 Largest Ethnic  
Groups in  
Region 6

Veteran Population: 3,165

4.2%

Veteran National Average

Region 6  
Average

3%



### 3 Most Common Veteran Groups

