

---

Project Location **Hoosier Grove Museum** 12/22/2020  
by **Jeff Janda** in **Member District ADA Project Request** id. 18614455  
jjanda@spdcares.com

---

**Original submission** 12/22/2020

---

Name	<b>Jeff Janda</b>
Job Title	<b>Executive Director</b>
E-mail Address	<b>jjanda@spdcares.com</b>
Phone Number	<b>630-483-3162</b>
Park District	<b>Streamwood</b>
Project Status	<b>New</b>
Project Type	<b>Routes and Surfaces</b>
Routes and Surfaces- select a Project Category below:	<b>Ramps</b>
Benefits of the Project	<p><b>The accessible ramp provides access to the lower level of the museum to individuals with disabilities who can not utilize the stairs to enter the facility. Previously a separate ramp provided access only to the main floor and individuals were required to use stairs to access the lower level of the facility to view exhibits and to utilize the facility restrooms.</b></p> <p><b>This ramp creates direct access to the lower level via the exterior rear door.</b></p>
Items that will become ADA Compliant	<p><b>The lower level of the historic facility, including exhibit area and restrooms, will become ADA accessible. Prior to the installation of the ramp. there was no ADA access to the lower level.</b></p> <p><b>Future ADA work planned includes replacing exterior doors and hardware for ease of ADA access.</b></p>

---

The project is designed or constructed, or applies human resources, to comply with:

**The 2010 Standards for Accessible Design  
The Illinois Accessibility Code**

---

Upload Project Related Files, Photos, Videos or Audio

[20200427\\_142620\\_resized.jpg](#)

[HGB\\_Museum\\_Ramp-\\_Status\\_Picture\\_6.14.2019.jpg](#)

[20200427\\_142634\\_resized.jpg](#)

[20200427\\_142644\\_resized.jpg](#)

[20200427\\_142711\\_resized.jpg](#)

[HGB\\_Museum\\_Ramp-\\_Final\\_4.5.19.pdf](#)

[Change\\_Order\\_1\\_4.11.19.pdf](#)

[HGB\\_Museum\\_Ramp-\\_Hacienda\\_invoice\\_request\\_6.17.2019.pdf](#)

[HGB\\_Museum\\_Ramp-\\_Talon\\_Electric\\_Payment\\_12.6.2018.png](#)

[NWSRA\\_Special\\_Request\\_Levy\\_Fund\\_Use\\_for\\_Museum\\_ADA\\_Ramp-12-21-2020.docx](#)

[Hoosier\\_Grove\\_Letter.pdf](#)

---

Budget Table for ADA Related Expenses

[f24bd294-3a1f-441b-91c6-c675113472ef.xlsx](#)

---

ADA Dollars Requested	<b>25340</b>
-----------------------	--------------

---

Notes related to requested amount

**The requested amount cover planning, and construction related to the ADA ramp installation. Planning/engineering, Concrete, Required Retaining Wall, Required Relocation of Electrical Wiring, Required Installation of Drain as Ramp Base. This ramp did not exist prior to this project.**

---



December 21, 2020

Ms. Tracey Crawford  
Executive Director  
Northwest Special Recreation Association  
3000 Central Road, Suite 205  
Rolling Meadows, IL 60008

Re: Hoosier Grove Museum ADA Ramp Access for Lower Level of Museum

Dear Ms. Crawford:

As you are aware, I assumed the role of Executive Director in late October 2019. Since my start date, I have become aware of an ADA project that began under the former administrative staff in 2017 and still has finally been completed. The project includes the installation of an ADA concrete ramp to provide access to the lower level of the Hoosier Grove Museum which contains exhibits and public restrooms. Due to the historic nature of the building, it was not possible to install an elevator inside the building and access to the upper level is currently available by an above ground ramp. Before this project there was no ADA access to the lower level, only inside stairs.

Apparently, the District did not or has not requested approval to utilize Special Recreation funds for this ADA compliance project as allowed by NWSRA.

The Streamwood Park District has hereby requests approval of the NWSRA Board of Directors for the proposed expenditure of funds from the District's Special Recreation levy, to pay the cost of the following improvement.

- Installation of an ADA compliant concrete ramp to provide access to the lower level of the Hoosier Grove Museum.

The cost of the improvement to totaled \$25,340 and included engineering, concrete, and required electrical, retaining wall, and drainage related improvements. The project cos breakdown is as follows:

Planning and Engineering:

W-T Engineering	\$4,000
Hacienda Landscaping #1	\$7,300
Hacienda Landscaping #2	\$8,600
Talon Electric	<u>\$5,440</u>
	\$25,340

The improvements were completed 2020 as the original ramp slopes needed to be corrected to meet ADA requirements. The anticipated benefits of the project to NWSRA are as follows:

The ramp will provide access for mobility challenged persons to the lower level of the museum and public restrooms.

The District respectfully requests that NWSRA review this request and present it with an approval recommendation to the NWSRA Board of Directors. If you have any questions or require additional information, please do not hesitate to contact me.

Please feel free to call me at 630.483.3162 or email me at [jjanda@spdcares.com](mailto:jjanda@spdcares.com).

Best Regards,

**STREAMWOOD PARK DISTRICT**

**Jeffrey S. Janda, CPRE Executive Director**

[jjanda@spdcares.com](mailto:jjanda@spdcares.com) | 630.483.3162



Engineering • Design • Consulting

**December 22, 2020**

**Streamwood Park District  
777 S. Bartlett Road  
Streamwood, IL 601017**

**ATTN: Mr. Jeffrey S. Janda; CPRE**

**Re: Hoosier Grove Park ADA Sidewalk  
700 W. Irving Park Road  
Streamwood, IL 60107**

**Dear Mr. Janda:**

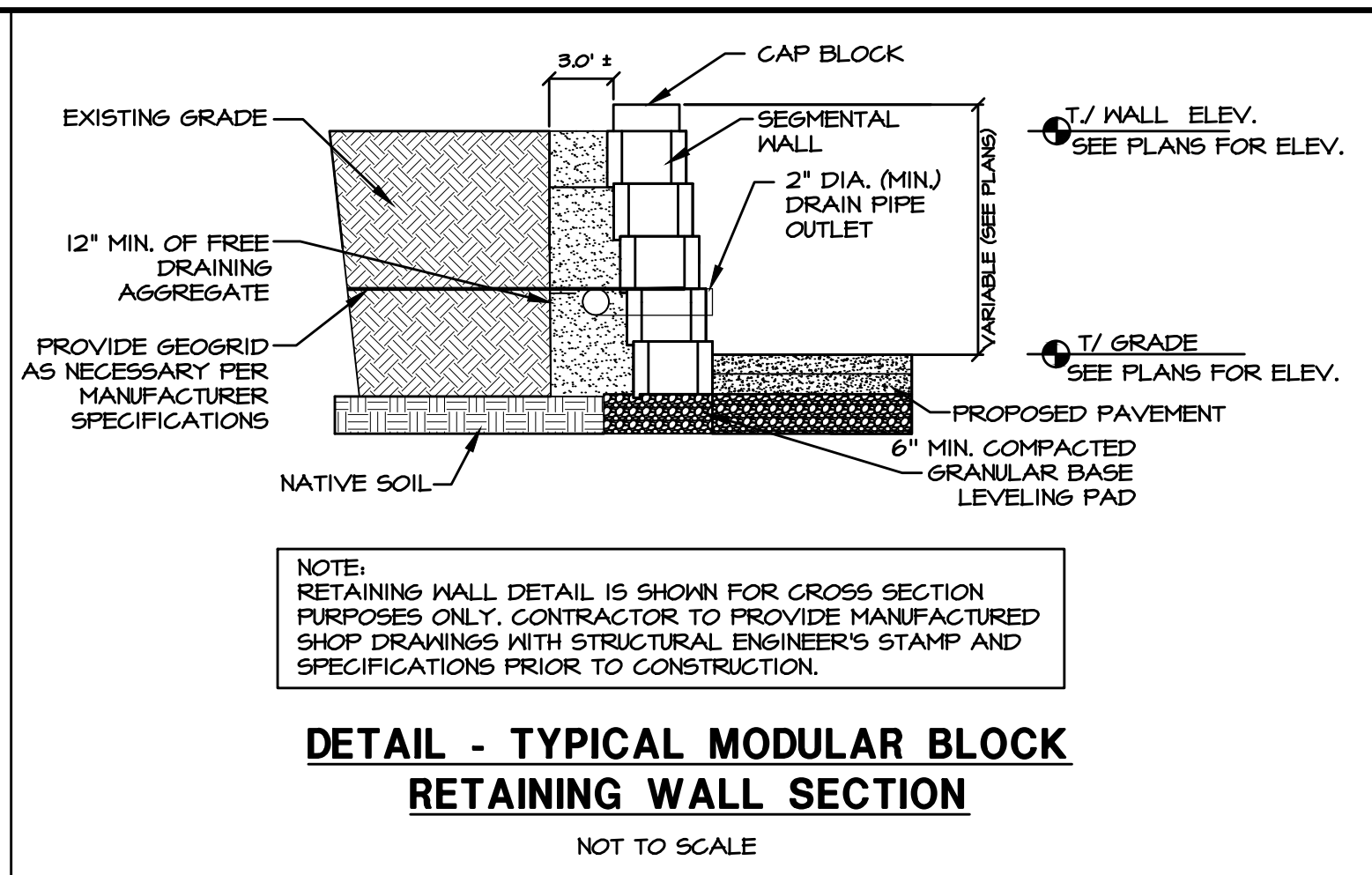
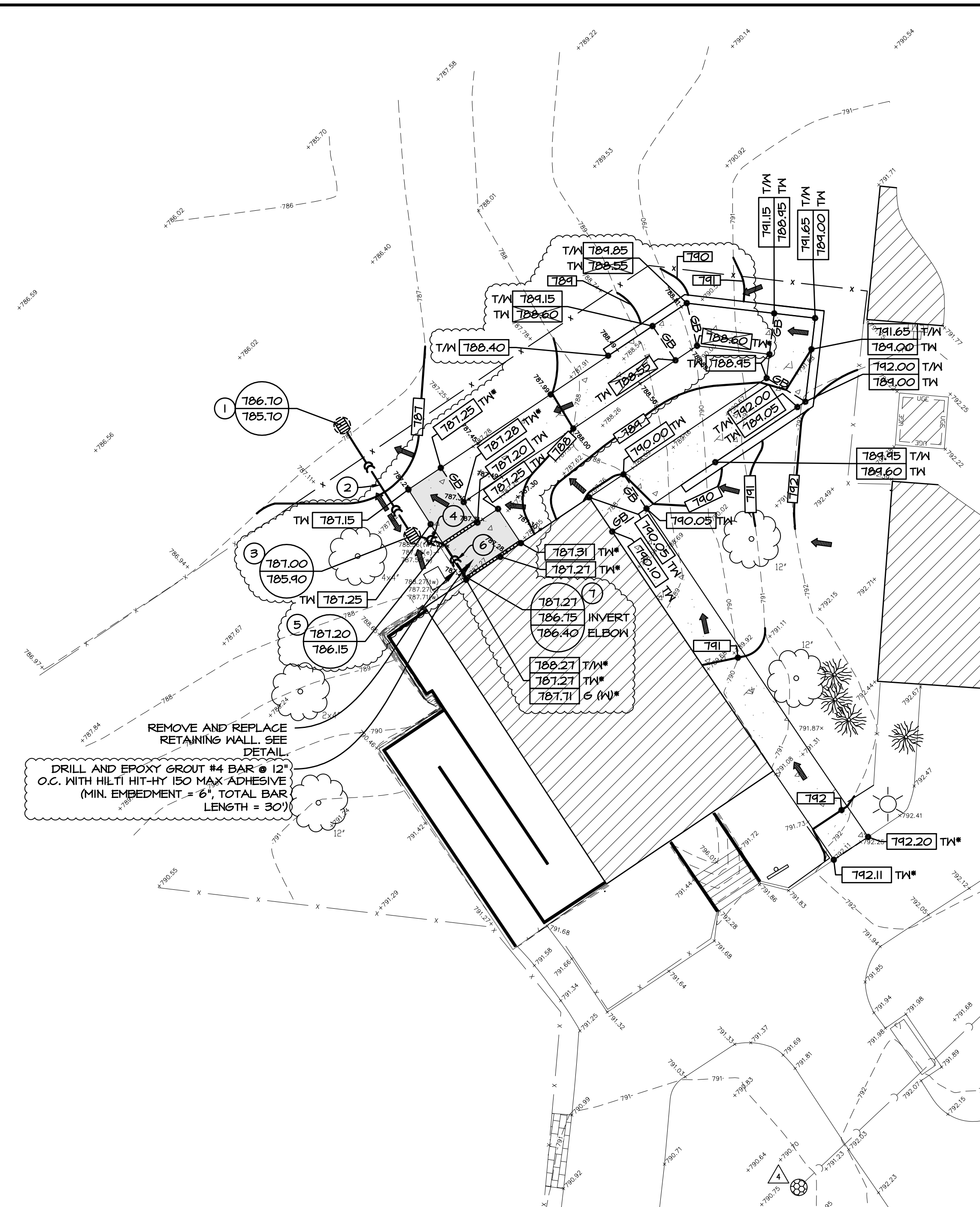
As you are aware, the Hoosier Grove Park ADA Sidewalk Project was included within the Streamwood Park District 2018 Paving Improvements project which included several park sites. The engineering costs associated with all of the individual park sites (including the Hoosier Grove Park ADA Sidewalk Project) were included within one (1) lump sum fee. However, when pricing the project for the Park District, WT Group included \$4,000.00 in engineering fees associated with the Hoosier Grove Park ADA Sidewalk Project. Therefore, the engineering fees associated with the Hoosier Grove Park ADA Sidewalk Project were \$4,000.00.

Please feel free to contact me if you have any questions or comments or if you require further information.

**Respectfully Submitted,  
W-T GROUP**

A handwritten signature in black ink, appearing to read 'Todd O. Abrams', with a horizontal line extending to the right.

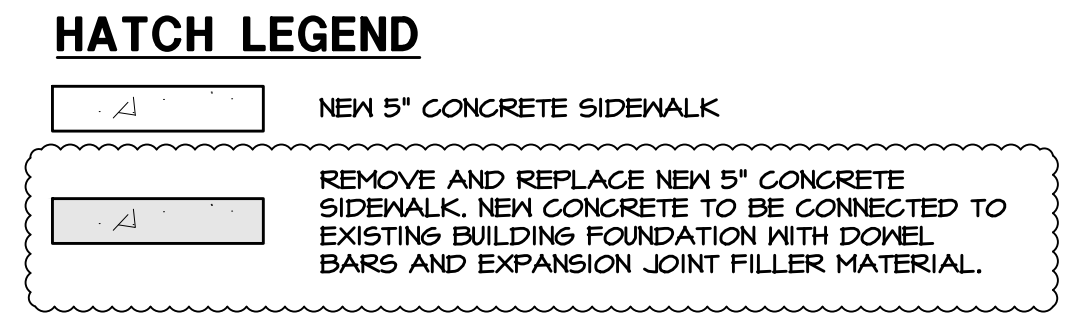
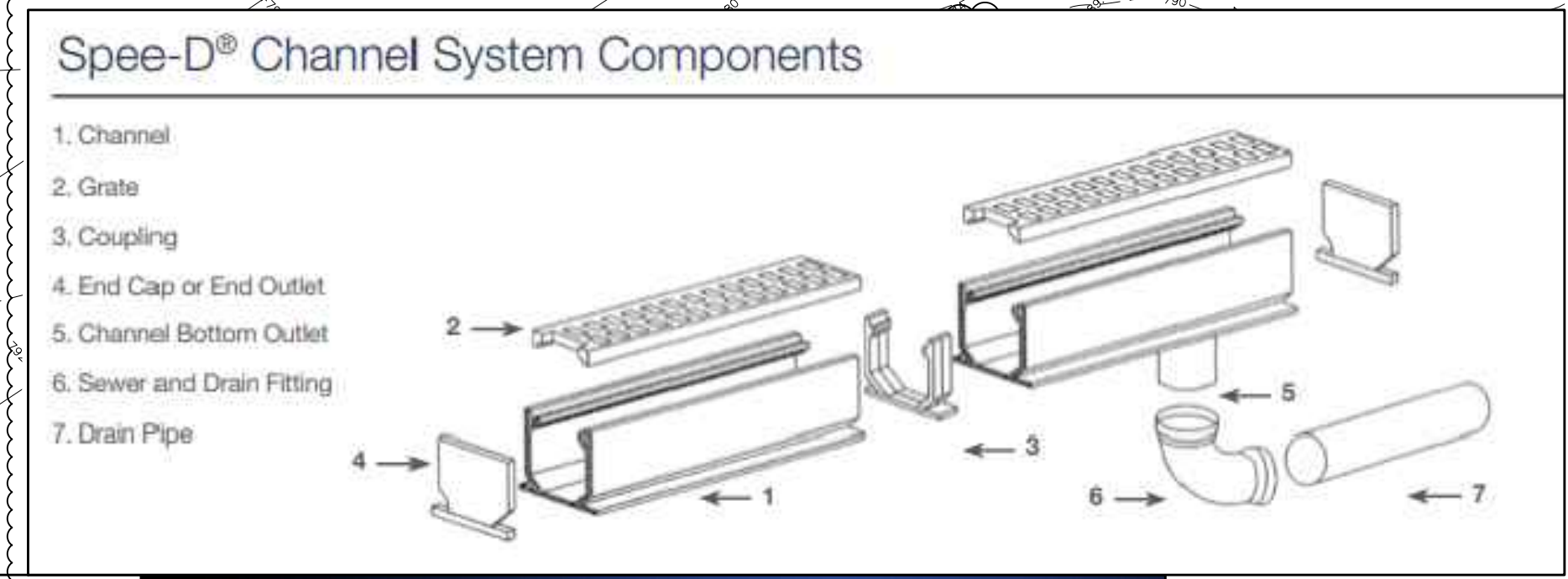
**Todd O. Abrams PE, CFM  
Executive Vice President**



**EXISTING UTILITY DATA:**

- 1. RIM=792.32 (SANITARY)  
48" CONCRETE STRUCTURE  
INV=788.38' (4" METAL NW)  
INV=788.38' (6" PVC SE)
- 2. RIM=792.60' (WATER)  
36" CONCRETE STRUCTURE  
TOP OF PIPE=787.87' (2" COPPER N/S)
- 3. RIM=791.03' (STORM)  
48" CONCRETE STRUCTURE  
INV=786.55' (12" CPP SW)  
INV=786.48' (12" CPP END)  
TOP OF WATER=786.38'
- 4. RIM=790.72' (STORM)  
34" CONCRETE STRUCTURE  
INV=788.25' (12" CPP NE)
- 5. RIM=788.47' (STORM)  
48" CONCRETE STRUCTURE  
INV=783.66' (12" CPP WSW)  
INV=782.45' (12" CPP E)
- 6. RIM=786.88' (STORM)  
48" CONCRETE STRUCTURE  
INV=781.77' (12" CPP W)  
INV=781.73' (12" CPP S)  
TOP OF WATER=781.77'

- SITE GRADING NOTES:**
- EXISTING CONDITIONS AND TOPOGRAPHY SHOWN REPRESENTS SITE CONDITIONS PER THE TOPOGRAPHIC SURVEY LAST DATED 1-10-18, PREPARED BY M-T LAND SURVEYING, LLC. CONTRACTOR SHALL FIELD VERIFY EXISTING ELEVATIONS AND CONDITIONS (INCLUDING BUT NOT LIMITED TO VERIFICATION OF CONTROL AND ALL UTILITIES WHETHER DEPICTED OR NOT) PRIOR TO CONSTRUCTION AND NOTIFY ENGINEER OF ANY DISCREPANCIES.
  - ALL PROPOSED GRADES ARE GIVEN TO FINISHED GRADE, I.E. TOP OF PROPOSED ASPHALT, CONCRETE, TOP OF PROPOSED CURBS, ETC. SEE DETAILS FOR PAVEMENT THICKNESS.
  - CONTRACTOR SHALL CONTACT JULLIE (811 OR 1-800-842-0123) AND/OR PRIVATE LOCATING SERVICE TO LOCATE ALL UNDERGROUND UTILITY LINES PRIOR TO STARTING ANY DEMOLITION AND/OR EXCAVATION. EXACT LOCATIONS OF ANY EXISTING ELECTRIC, GAS, TELEPHONE, ETC. LINES ARE UNKNOWN. CONTRACTOR SHALL ENSURE POSITIVE SITE DRAINAGE AT THE END OF EACH WORKING DAY DURING CONSTRUCTION OPERATIONS. FAILURE TO PROVIDE ADEQUATE DRAINAGE WILL PRECLUDE THE CONTRACTOR FROM ANY POSSIBLE COMPENSATION REQUESTED DUE TO DELAYS OR UNSUITABLE MATERIALS CREATED AS A RESULT.
  - CONTRACTOR SHALL RESTORE ALL DISTURBED AREAS OUTSIDE OF CONSTRUCTION LIMITS TO ORIGINAL CONDITION OR BETTER. CONTRACTOR SHALL REPAIR AT HIS EXPENSE ANY DAMAGE TO EXISTING ASPHALT, CONCRETE, CURBS, SIDEWALKS, ETC. RESULTING FROM CONSTRUCTION TRAFFIC AND/OR OPERATIONS. REPAIRS SHALL BE MADE TO THE SATISFACTION OF THE OWNER AND/OR ENGINEER.
  - CONTRACTOR TO UTILIZE CARE WHEN WORKING NEAR EXISTING UTILITIES TO REMAIN. ANY DAMAGE TO EXISTING UTILITIES NOT NOTED TO BE REMOVED SHALL BE REPAIRED AT CONTRACTOR'S EXPENSE TO THE SATISFACTION OF THE OWNER AND/OR ENGINEER.
  - ALL EXISTING TREES SHOWN ARE TO REMAIN UNLESS OTHERWISE NOTED.
  - ALL HANDICAP ACCESSIBLE ROUTES (SIDEWALKS, WALKWAYS, PAVEMENTS, ETC.) SHALL MAINTAIN A MAXIMUM CROSS SLOPE OF 2.00% AND A MAXIMUM LONGITUDINAL SLOPE OF 5.00%. ACCESSIBLE PARKING STALLS SHALL MAINTAIN A MAXIMUM SLOPE OF 2.00% IN ALL DIRECTIONS.
  - VOIDS LEFT BY ANY ITEM REMOVED UNDER ANY PROPOSED BUILDING, PAVEMENT, OR WALK OR WITHIN 24" THEREOF SHALL BE BACKFILLED WITH ENGINEERED FILL.
  - ALL FIRE ACCESS LANES WITHIN THE PROJECT AREA SHALL REMAIN IN SERVICE, CLEAN OF DEBRIS, AND ACCESSIBLE FOR USE BY EMERGENCY VEHICLES.
  - CONSTRUCTION ACCESS POINTS TO THE SITE SHALL BE PROTECTED IN SUCH A WAY AS TO PREVENT TRACKING OF MUD OR SOIL ONTO PUBLIC THOROUGHFARES. ALL SEDIMENT SPILLED, DROPPED, WASHED OR TRACKED ONTO PUBLIC RIGHTS-OF-WAY MUST BE REMOVED IMMEDIATELY BY THE CONTRACTOR.
  - CONTRACTOR TO PROVIDE SOIL TESTING SERVICES FOR COMPLETION OF THE ILLINOIS ENVIRONMENTAL PROTECTION AGENCY'S LPC-662 AND/OR LPC-663 FORMS AS PART OF THEIR CONTRACT.



- ALTERNATE 6 NOTES:**
- NOTES:
- SEE BID FORM FOR ADDITIONAL ALTERNATE INFORMATION. IF ALTERNATES ARE CHOSEN FROM BELOW, THESE ITEMS SHALL BE VERIFIED WITH THE CIVIL ENGINEER FOR DESIGN CHANGES PRIOR TO CONSTRUCTION.
  - ALL WORK ASSOCIATED WITH HOOSIER PARK SHALL BE BID AS ALTERNATE #6.

**NDS TECHNICAL SPECIFICATIONS**

**12" x 12" CATCH BASIN**

1200BLKIT- Catch basin with 2 openings  
1200- Catch basin with two openings  
1203- Catch basin with 5 openings  
1204- Catch basin with 4 openings

Material: Polypropylene  
Colors: Black (1200BLKIT, 1200, 1203, 1204)  
Fits: Requires either part # 1206, #1242, # 1243, #1245, #1266, or # 1889 Universal Outlet for each opening.  
Bottom cutout may be used for additional outlet.

**Features to Eliminate Standing Water**

- No bottom Option
- 1/2" Drain Holes
- Cut out for Universal Outlet

851 N. Harvard Avenue  
Evanston, IL 60121  
848-724-1994

**NDS TECHNICAL SPECIFICATIONS**

**2' SPEE-D CHANNEL WITH BTM OUTLET**

Part #: 234  
Material: PVC  
Color: # Gray  
Fits: 2" Sch. 40 pipe, 3" and 4" sewer and drain pipe  
UV Inhibitors.

**Product Details**

Product Details	Part number 234
Material	PVC
Color	Gray
Length	24
Height	5-5/8"
Weight	0.5000

851 N. Harvard Avenue  
Evanston, IL 60121  
848-724-1994

**NDS TECHNICAL SPECIFICATIONS**

**UTILITY LEGEND**

- EXISTING STORM SEWER
- PROPOSED STORM SEWER
- EXISTING SANITARY SEWER
- EXISTING WATER MAIN
- EXISTING UTILITY POLE
- EXISTING CLOSED MANHOLE
- EXISTING BEEHIVE GRATE MANHOLE
- NEW CATCH BASIN
- NEW RIM ELEVATION
- NEW INVERT ELEVATION

**GRADING LEGEND**

- EXISTING SPOT GRADE
- PROPOSED SPOT GRADE
- EXISTING CONTOUR LINE
- PROPOSED CONTOUR LINE
- OVERLAND FLOW ARROW
- 100 YEAR OVERLAND FLOW ROUTE
- TOP OF PAVEMENT ELEVATION
- TOP OF SIDEWALK ELEVATION
- TOP OF WALL ELEVATION
- FINISHED GRADE ELEVATION
- GRADE BREAK
- MATCH EXISTING ELEVATION

**STORM SEWER**

- NEW 12"x12" NDS CATCH BASIN.
- NEW 6" HDPE, 16 L.F. @ 2.50% SLOPE.
- NEW 12"x12" NDS CATCH BASIN.
- NEW 4" P.V.C. PIPE, 4 L.F. @ 6.25% SLOPE WITH ALL NECESSARY FITTINGS TO CONNECT TO THE 12"x12" NDS CATCH BASIN AND NDS CHANNEL SYSTEM.
- NEW NDS SPEE-D CHANNEL SYSTEM WITH FABRICATED 4" BOTTOM OUTLET AND ADA-COMPLIANT NDS #254 GALVANIZED STEEL CHANNEL GRATE, WITH ALL NECESSARY FITTINGS.
- NEW 4" P.V.C. PIPE, 5 L.F. @ 5.00% SLOPE WITH ALL NECESSARY FITTINGS TO CONNECT TO BOTH NDS CHANNEL SYSTEMS.
- NEW NDS SPEE-D CHANNEL SYSTEM WITH FABRICATED 4" BOTTOM OUTLET AND ADA-COMPLIANT NDS #254 GALVANIZED STEEL CHANNEL GRATE, WITH ALL NECESSARY FITTINGS.

1" = 10'  
10 20 40

851 N. Harvard Avenue  
Evanston, IL 60121  
848-724-1994

**NDS TECHNICAL SPECIFICATIONS**

**SQUARE CATCH BASIN**

12" SQUARE CATCH BASIN - TYPICAL INSTALLATION FOR PEDESTRIAN & LIGHT VEHICULAR TRAFFIC APPLICATION LOAD CASE A & B

851 N. Harvard Avenue  
Evanston, IL 60121  
848-724-1994

**W-T CIVIL ENGINEERING, LLC**  
CIVIL ENGINEERING CONSULTANTS

2875 Truman Avenue  
Hoffman Estates, Illinois 60132  
PH: (224) 222-5555  
www.wtengineering.com

IL License No.: 184-007570-0015 Exp: 04/30/19

**HOOSIER PARK ROAD  
700 WEST IRVING ROAD  
STREAMWOOD, ILLINOIS**

**SITE GRADING /  
UTILITY PLAN**

DATE: 12-27-17  
SCALE: 1"=20'  
DRAWN: KJM  
CHECK: TOA  
JOB: CE17146  
SHEET: C-4.0

REVISIONS

DATE	BY	DESCRIPTION
09-25-18	KJM	SCOPE REDUCTION
12-14-18	A.E.	SIDEWALK REMEDIATION
04-04-19	A.E.	

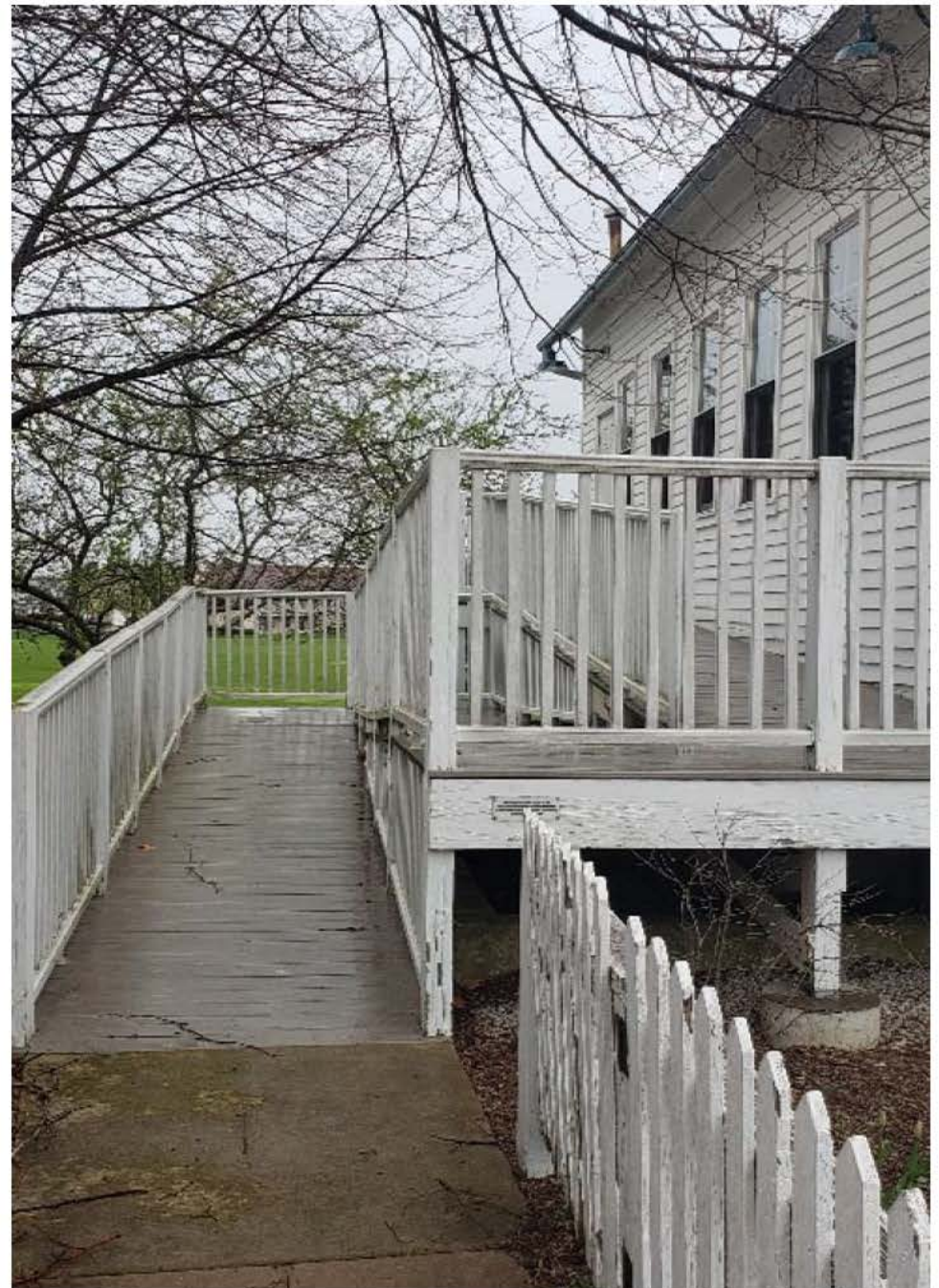
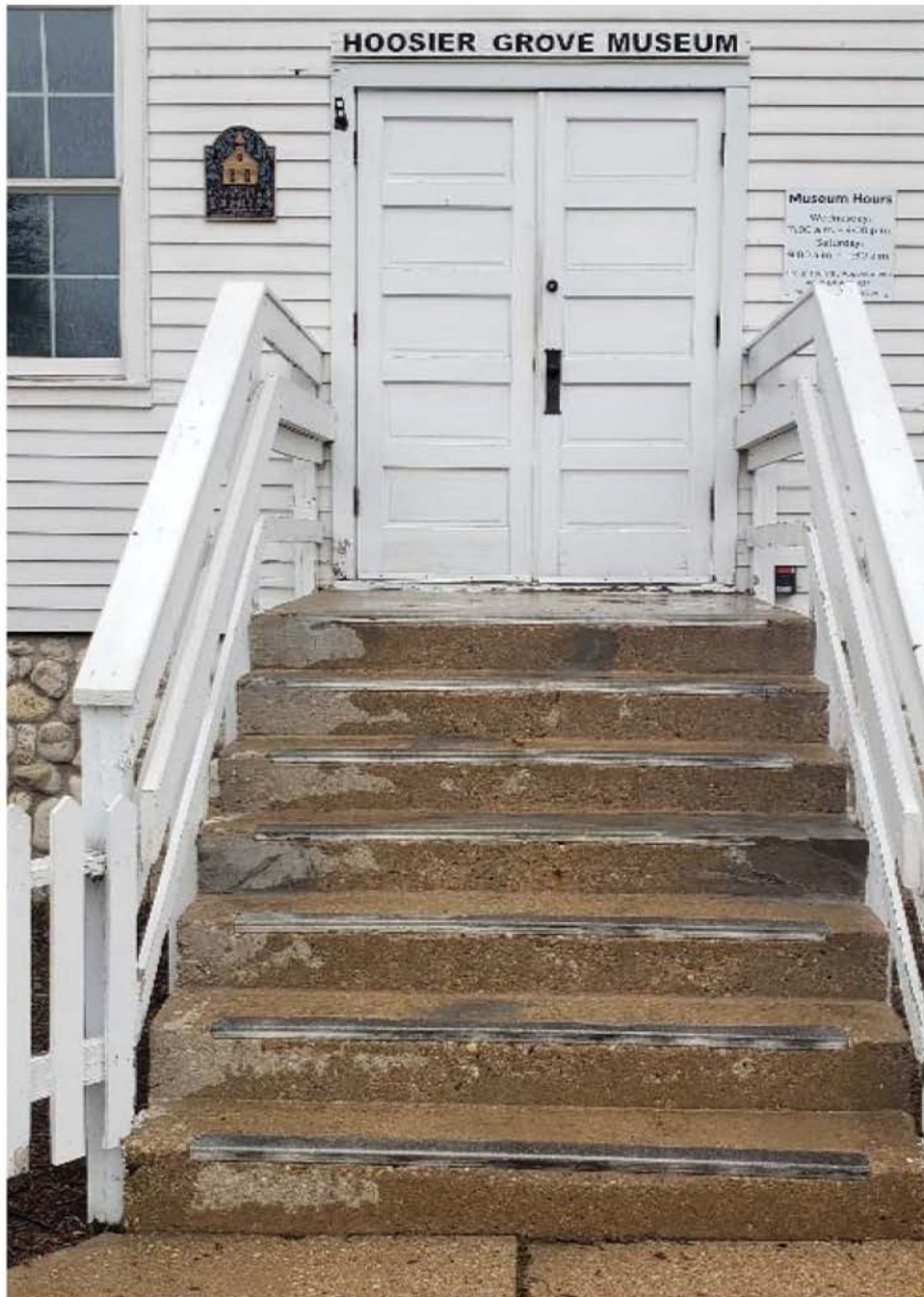
851 N. Harvard Avenue  
Evanston, IL 60121  
848-724-1994

Visit [ndspro.com](http://ndspro.com) for specs, detail drawings, and case studies

**NDS**  
WE PUT WATER IN ITS PLACE

Copyright © 2018 W-T CIVIL ENGINEERING, LLC









**HERITAGE MARKER**

**HOOISER GROVE  
SCHOOLHOUSE**

**STREAMWOOD, ILLINOIS**

**BUILT IN 1904,  
THIS ONE-ROOM SCHOOLHOUSE SERVED THE  
HANOVER TOWNSHIP COMMUNITY  
FOR 50 YEARS.**

**THIS PLAQUE IS DEDICATED TO  
ALL WHO WORKED TO PRESERVE  
THIS PIECE OF HISTORY  
FOR FUTURE GENERATIONS.**

**HERITAGE MARKER ERECTED BY THE AUTHORITY OF THE  
HANOVER TOWNSHIP BOARD  
IN COOPERATION WITH THE  
STREAMWOOD PARK DISTRICT AND THE  
STREAMWOOD HISTORICAL SOCIETY**

