

Title **NWSRA Program Space, 601 Deerfield Parkway, Buffalo Grove, IL 60089** 03/12/2025  
id. 49939175

by **Laurie Hoffman** in **Member District ADA Project Request**

530 Bernard Drive  
Buffalo Grove, Illinois  
60089  
IL  
United States  
8478502115  
lhoffman@bgparks.org

**Original Submission** 03/12/2025

Score	n/a
Name	Laurie Hoffman
Job Title	Planning and Development Manager
E-mail Address	laurie@bgparks.org
Phone Number	8478502115
Park District	Buffalo Grove
Project Location	NWSRA Program Space, 601 Deerfield Parkway, Buffalo Grove, IL 60089
Project Status	Alteration
Project Type	Special Rooms, Spaces and Elements
Special Rooms, Spaces and Elements- select a Project Category below:	Assembly Areas
Benefits of the Project	Creates a space to house a new Media Room for the NWSRA Pursuit program at this location.
Items that will become ADA Compliant	Removal of existing cabinets and an existing dividing wall to create a larger space for the Media Room Equipment. Installation of new flooring.

The project is designed or constructed, or applies human resources, to comply with:

---

Upload Project Related Files, Photos, Videos or Audio

[Media\\_Room\\_Receipts.pdf](#)

[Media\\_Room\\_Labor.docx](#)

[Media\\_Lab\\_V1-2.pdf](#)

---

Budget Table for ADA Related Expenses

[Budget Table.xlsx](#)

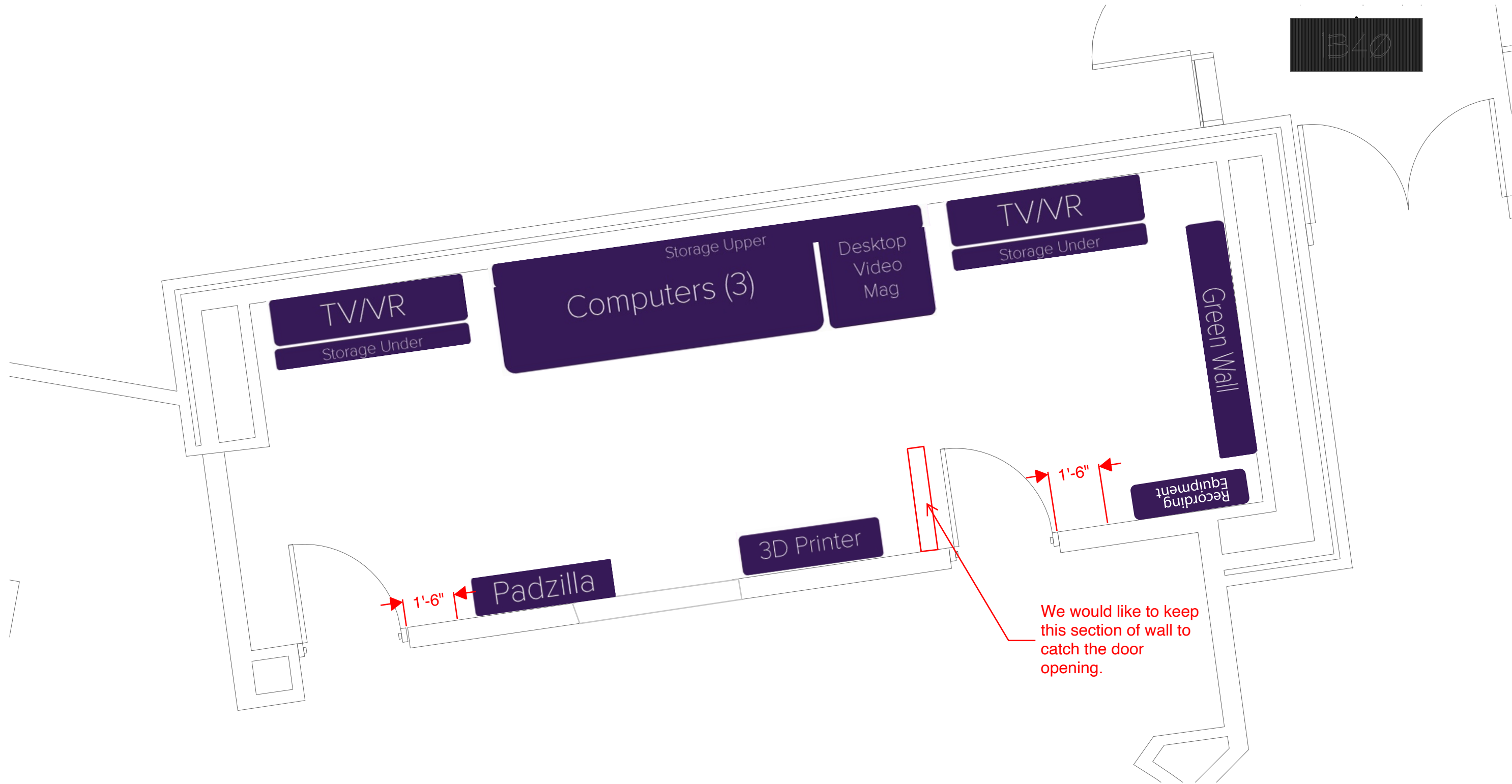
---

ADA Dollars Requested	11882.56
-----------------------	----------

---

Notes related to requested amount	Project was discussed and NWSRA prior to commencement. Amount requested includes labor and material cost for the removing a section of interior wall, removing existing cabinets, relocating electrical outlets, running new CAT6 cable, removing a door, infilling the section of wall where the door was removed, ceiling modifications where the wall was removed, painting and installing new flooring.
-----------------------------------	---

---



340

TV/VR  
Storage Under

Storage Upper  
Computers (3)

Desktop  
Video  
Mag

TV/VR  
Storage Under

Green Wall

Recording  
Equipment

3D Printer

Padzilla

We would like to keep  
this section of wall to  
catch the door  
opening.

1'-6"

1'-6"

1'-6"

9"-1"