

Title **Willow Trails Park 1 Apple Drive Prospect Heights, IL** 09/19/2023
id. 44130525
by **MIKE HANLEY** in **Member District ADA Project Request**
1500 E Euclid Ave
Mt. Prospect, Illinois
60056
United States
8473940540
mhanley@rtpd.org

Original Submission 09/19/2023

Name **MIKE HANLEY**

Job Title **Willow Trails Park Renovation**

E-mail Address **mhanley@rtpd.org**

Phone Number **8473940540**

Park District **River Trails**

Project Location **Willow Trails Park 1 Apple Drive Prospect Heights, IL**

Project Status **New**

Project Type **Recreation Facilities and Amenities
Routes and Surfaces**

Recreation Facilities and Amenities- select a Project Category below: **Playgrounds- Play Components**

Routes and Surfaces- select a Project Category below: **Sidewalks
Ramps
Play Surfaces**

Benefits of the Project

Willow Trails Park is undergoing a major renovation. The playground, athletic courts, pathways, and site amenities will be updated to serve as an appealing and safe recreational location for all park users. The park was last renovated in 1993. the new overall design focuses on engaging activities and active and passive spaces for all age group and abilities.

The Landscape structure playground selected was specifically chosen for its ADA Compliance. 65% of the playground is certified ADA approved. Rubberized poured in place surfacing surrounds many of the playground elements. Sidewalk widths and grades along with ADA accessible seating and companion seating are incorporated into the park design.

Items that will become ADA Compliant

**Playground Elements
Fitness Equipment
Sidewalks and companion seating space at benches
PIP Surfacing**

The project is designed or constructed, or applies human resources, to comply with:

**The 2010 Standards for Accessible Design
The Illinois Accessibility Code
PROWAG and the Shared Use Paths Guideline in Development
ASTM Standard for Accessible Exercise Equipment
ASTM F 1951 Standard for Accessible Playground Surfaces
Smart practices in an area not yet addressed by the State of Illinois or a federal standard
Agency's ADA Transition Plan**

Upload Project Related Files, Photos, Videos or Audio

[NWSRA_Submission_Willow_PIP.pdf](#)

[NWSRA_Submission_Willow_Futsal_path.pdf](#)

[NWSRA_Submission_Willow_playground_image.pdf](#)

[NWSRA_Submission_Willow_Playground_invoice.pdf](#)

[NWSRA_Submission_Willow_Pathways.pdf](#)

[NWSRA_Submission_Willow_Ramp.pdf](#)

Budget Table for ADA Related Expenses

[Budget Table.xlsx](#)

ADA Dollars Requested

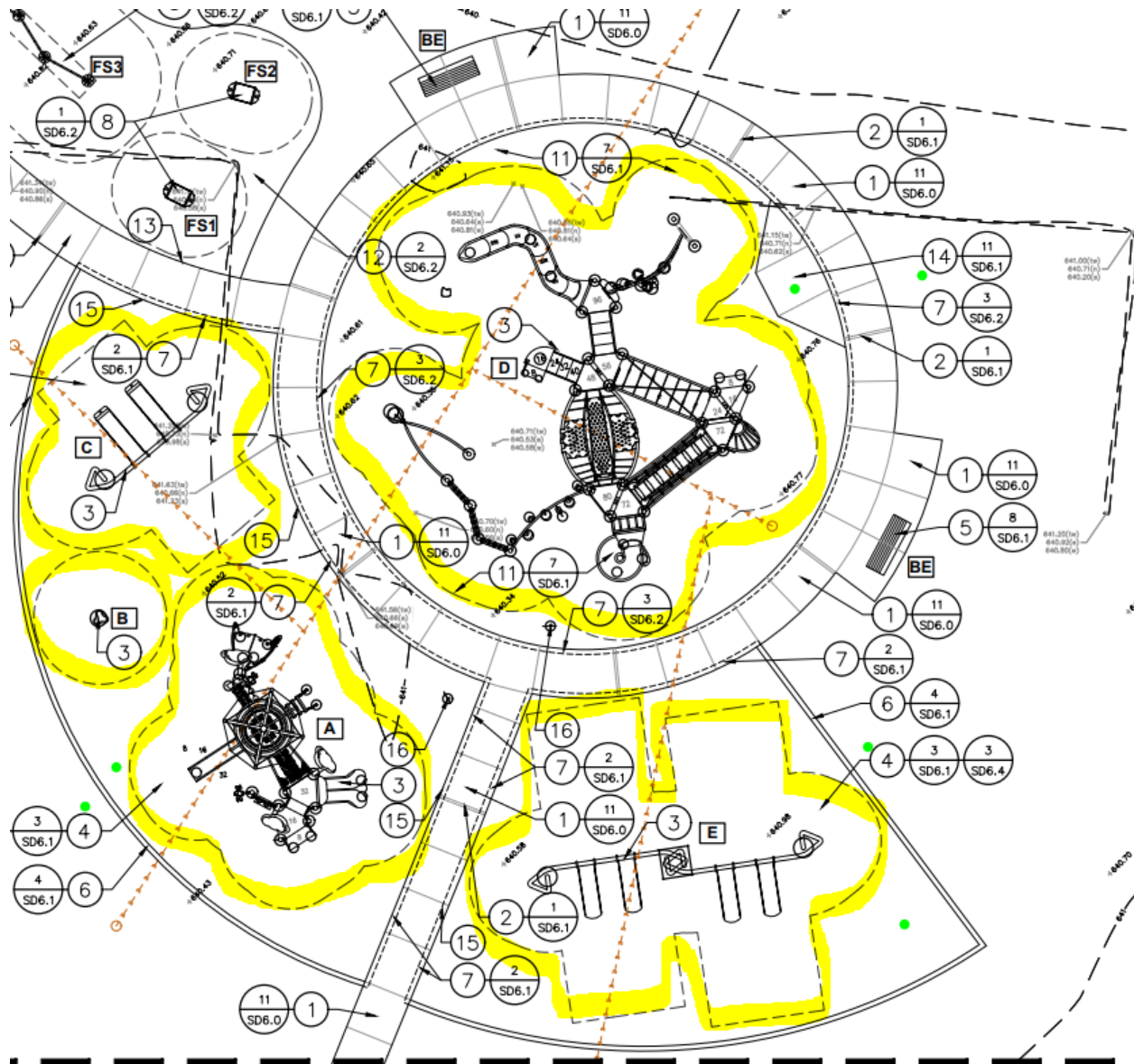
226552.53

Notes related to requested amount

n/a

Playground





SITE CONSTRUCTION PLAN NOTES:

1. 4" REINFORCED CONCRETE WALK. SCORE WALK IN 5' MODULES OR AS SHOWN AND PROVIDE 1/2" EXPANSION JOINTS AT 30' INTERVALS OR AS SHOWN. BACKFILL WALK WHERE APPLICABLE WITH TOPSOIL BY AN APPROVED METHOD. SEE DETAIL.
2. EXPANSION JOINT (TYP.). LOCATE AT INTERVALS OF 30' ON CENTER, OR AS SHOWN. SEE DETAIL.
3. INSTALL PLAY APPARATUS PURCHASED BY OWNER. INSTALL PER MANUFACTURER'S INSTRUCTIONS. VERIFY SAFETY CLEARANCES PRIOR TO INSTALLATION. AVOID DRAIN LINES. REPORT ANY DISCREPANCIES TO THE LANDSCAPE ARCHITECT IMMEDIATELY. SEE ALSO PLAY APPARATUS SCHEDULE.
4. FURNISH AND INSTALL POURED-IN-PLACE RUBBER PLAY SURFACE. INSTALL PER MANUFACTURER'S RECOMMENDATIONS FOR MINIMUM FALL HEIGHT IN COMPLIANCE WITH ASTM STANDARDS. SEE DETAILS FOR COLOR LAYOUT AND CONSTRUCTION REQUIREMENTS.
5. FURNISH AND INSTALL BENCH (BE). SEE ALSO SITE FURNISHINGS SCHEDULE.
6. 6"x12" CONCRETE CURB. SEE DETAIL.
7. 4" REINFORCED CONCRETE WALK WITH THICKENED CURB EDGE. SEE DETAIL.
8. FURNISH AND INSTALL FITNESS STATIONS (FS1, FS2 AND FS3). SEE ALSO SITE FURNISHINGS SCHEDULE AND DETAIL.
9. MEET EXISTING CONCRETE PAVEMENT ELEVATION WITH NEW 4" REINFORCED CONCRETE PAVEMENT. ALL PAVEMENT TRANSITIONS SHALL BE SMOOTH AND SUBTLE. ANY ABRUPT OR NOTICEABLE ELEVATION CHANGES SHALL BE REMOVED OR REPAIRED AT NO ADDITIONAL EXPENSE TO THE PARK DISTRICT.
10. FURNISH AND INSTALL 42" ORNAMENTAL ALUMINUM FENCE.
11. ENGINEERED WOOD FIBER SAFETY SURFACE. EXCAVATE TO SUBGRADES SHOWN AND INSTALL SAFETY SURFACE MATERIAL AND SOIL SEPARATOR. (12" AFTER CONSOLIDATION)
12. DECOMPOSED GRANITE WITH ALUMINUM EDGING. SEE DETAIL.
13. MEET NEW 4" REINFORCED CONCRETE PAVEMENT ELEVATION WITH NEW DECOMPOSED GRANITE SURFACING. ALL PAVEMENT TRANSITIONS SHALL BE SMOOTH AND SUBTLE.
14. FURNISH AND INSTALL ADA ACCESSIBLE RAMP. SEE DETAIL.
15. MEET NEW 4" REINFORCED CONCRETE PAVEMENT WITH NEW POURED-IN-PLACE SURFACING FLUSH. ALL PAVEMENT TRANSITIONS SHALL BE SMOOTH AND SUBTLE. ANY ABRUPT OR NOTICEABLE ELEVATION CHANGES SHALL BE REMOVED OR REPAIRED AT NO ADDITIONAL EXPENSE TO THE PARK DISTRICT.
16. INSTALL PLAY APPARATUS WELCOME SIGN PURCHASED BY OWNER. INSTALL PER MANUFACTURER'S INSTRUCTIONS. AVOID DRAIN LINES. SEE ALSO PLAY APPARATUS SCHEDULE.
17. FURNISH AND INSTALL FITNESS STATION APPARATUS WELCOME SIGN. INSTALL PER MANUFACTURER'S INSTRUCTIONS. AVOID DRAIN LINES. SEE ALSO SITE FURNISHINGS SCHEDULE.

PLAY APPARATUS SCHEDULE

KEY	QTY.	ITEM	MODEL	MANUF.	COMMENTS
A	1	DTR SP BREEZE DB ONLY INCLUDES: BELT BRIDGE CLIMBER CLOUD BELT CLIMBER COUNTER W/ SEATS (UNDER BASKET) CRAWL TUNNEL CRAWL TUNNEL SLIDER DISKS LAVA RUN SLIDE LUMBER CLIMBER PINWHEEL TALK TUBE (2) SINGLE SLIDE STEERING WHEEL STORE FRONT PANEL	LS	CP021021A	PURCHASED BY OWNER, RENDERING DATED 03/13/2023
	1	WELCOME SIGN (LSI PROVIDED) AGES 2-5 YEARS DB		182503A	
B	1	SADDLE SPINNER DB 12"HEIGHT	LS	152179A	PURCHASED BY OWNER, RENDERING DATED 03/13/2023
C	2	FULL BUCKET SEAT PROGUARD CHAINS 8' BEAM	LS	176038A	PURCHASED BY OWNER, RENDERING DATED 03/13/2023
	1	HEDRA SWING FRAME DB ONLY		278557A	
D	1	BRIDGE/RAMP TRANSITION BRACKET	LS	111345A	PURCHASED BY OWNER, RENDERING DATED 03/13/2023
	1	SWIGGLEKNOTS BRIDGE W/O DECK CONNECTIONS DB ONLY		193171C	
	1	GEOPLEX DOUBLE PANEL ELEVATED		220539A	
	2	GEOPLEX DOUBLE PANEL GROUND LEVEL		220538A	
	1	TIDAL WAVE CLIMBER 48"DK DB		302740B	
	1	VINE CLIMBER 8"DK TO 96"DK DB ONLY		302748A	
	1	DECK LINK W/BARRIERS STEEL END PANELS 4 STEPS		152907D	
	1	SEEKER CLIMBER W/PERMALENE HANDHOLDS 32" DECK DIFF ATTACHED TO 56"		203845A	
	1	SUNBEAM CLIMBER		176079A	
	1	TRAVELER CLIMBER W/2 HANGER BRACKETS		200609A	
	1	VERTICAL LADDER - PANEL 48"		116247D	
	1	CURVED TRANSFER MODULE RIGHT 48"DK DB		152911C	
	3	KICK PLATE 8"RISE		121948A	
	1	TRANSFER STEP W/2 HANDLOOPS DB		185852A	
	8	TRIANGULAR TENDERDECK		111231A	
	1	PIPE BARRIER ABOVE DECK		116244A	
	1	GRAB BAR		120901A	
	1	SOL SPINNER DB		193174A	
	3	124"ALUM POST DB		111404D	
	4	132"ALUM POST DB		111404C	
	2	132"STEEL POST DB 42" BURY		111404O	
	1	140"ALUM POST DB		111404B	
	1	148"ALUM POST DB		111404A	
	2	156"ALUM POST DB		111404K	
	4	164"ALUM POST DB		111404L	
	3	182"STEEL POST DB 44" BURY		111404Z	
	2	84"ALUM POST DB		111404I	
	1	92"ALUM POST DB		111404H	
	1	SLIDEWINDER 2 96"DK DB ONLY 2 STRAIGHT 1 RIGHT 2 LEFT		124863G	
	1	WHOOSH WINDER SLIDE 72"DK DB		222708A	
	1	WELCOME SIGN (LSI PROVIDED) AGES 5-12 YEARS DB		182503C	
E	4	BELT SEAT PROGUARD CHAINS 8' BEAM	LS	174018A	PURCHASED BY OWNER, RENDERING DATED 03/13/2023
	2	HEDRA SWING FRAME DB ONLY		278557A	
	1	HEDRA SWING FRAME SPACER SET		281067A	



Box 7075
 Westchester, IL 60154
 708-579-9055
 708-579-0109 (fax)
 1-800-526-6197

May 1, 2023

WILLOW TRAILS PARK
 PROSPECT HEIGHTS, IL
 OPTION 1 - REVISED
 SMARTPLAY/PLAYBOOSTER COMPONENT SYSTEM

<u>QTY.</u>	<u>NO.</u>	<u>DESCRIPTION</u>	<u>UNIT PRICE</u>	<u>PRICE</u>
2-5 Year Olds Play Equipment				
1	CP021021A	DTR SP Breeze DB Only		\$ 39,501
	includes:	Belt Bridge Climber		
		Cloud Belt Climber		
		Counter w/ Seats (Under Basket)		
		Crawl Tunnel		
		Crawl Tunnel Slider Disks		
		Lava Run Slide		
		Lumber Climber		
		Pinwheel Talk Tube (2)		
		Single Slide		
		Steering Wheel		
		Store Front Panel		
1	182503A	Welcome Sign (LSI Provided) Ages 2-5 years DB		-
ALSO:				
1	152179A	Saddle Spinner DB 12"Height		\$ 1,307
New 2-Place Hedra Swing Set 2 Full Bucket Seats				
2	176038A	Full Bucket Seat Proguard Chains 8' Beam	\$ 446	\$ 893
1	278557A	Hedra Swing Frame DB Only		4,048
		Subtotal		\$ 4,940
5-12 Year Olds Play Equipment				
1	111345A	Bridge/Ramp Transition Bracket		\$ 378
1	193171C	SwiggleKnots Bridge w/o Deck Connections DB Only		7,844
1	220539A	GeoPlex Double Panel Elevated		1,685
2	220538A	GeoPlex Double Panel Ground Level	\$ 1,685	3,371
1	302740A	Tidal Wave Climber 56"Dk DB		11,571
1	302748A	Vine Climber 8"Dk to 96"Dk DB Only		9,256
2	152907D	Deck Link w/Barriers Steel end panels 4 Steps	\$ 4,237	8,474
1	203845A	Seeker Climber w/Permalene Handholds 32" Deck Diff Attached to 56"		8,300
1	176079A	Sunbeam Climber		2,273
1	200609A	Traveler Climber w/2 Hanger Brackets		11,324
1	116247D	Vertical Ladder - Panel 48"		\$ 1,649

Willow Trails Park - Option 1 Revised

1	121948B	Kick Plate 16"Rise		\$	247
1	121948A	Kick Plate 8"Rise			147
2	185852A	Transfer Step w/2 Handloops DB	\$	1,292	2,583
8	111231A	Triangular Tenderdeck		1,013	8,106
1	119646A	Tri-Deck Extension			987
1	116244A	Pipe Barrier Above Deck			798
2	120901A	Grab Bar		247	494
1	193174A	Sol Spinner DB			2,972
2	111404G	100"Alum Post DB		373	746
2	111404D	124"Alum Post DB		457	914
4	111404C	132"Alum Post DB		473	1,890
2	111404O	132"Steel Post DB 42" BURY		378	756
2	111404B	140"Alum Post DB		478	956
1	111404A	148"Alum Post DB			504
6	111404L	164"Alum Post DB		588	3,528
3	111404Z	182"Steel Post DB 44" Bury		593	1,780
2	111404I	84"Alum Post DB		347	693
2	111404H	92"Alum Post DB	\$	357	714
1	124863G	SlideWinder2 96"Dk DB Only 2 Straight 1 Right 2 Left			5,376
1	222708A	WhooshWinder Slide 72"Dk DB			6,468
1	182503C	Welcome Sign (LSI Provided) Ages 5-12 years DB			-
		Subtotal			\$ 106,780

New 4-Place Hedra Swing Set

4 Belt Seats

4	174018A	Belt Seat Proguard Chains 8' Beam	\$	158	\$ 630
2	278557A	Hedra Swing Frame DB Only		4,048	8,096
1	281067A	Hedra Swing Frame Spacer Set			-
		Subtotal			\$ 8,726

Equipment Subtotal	\$ 161,254
Sourcewell Discount - 8%	(12,900)
Shipping Costs	4,590
Equipment Total	\$ 152,943

ELEVATED ACCESSIBLE EVENTS	\$ 66,171
GROUND LEVEL ACCESSIBLE EVENTS	\$ 33,065

Project Type (From Above)	Project Category (From Above)	Media File #/Name	Project Category Cost	ADA Portion of Project Category Cost	% ADA Dollars Requested
Routes and Surfacing	Play Surfaces	NWSRA Submission Willc	105008.8	105008.8	100.00%
Routes and Surfacing	Sidewalk	NWSRA Submission Willc	2340	2340	100.00%
Recreation Facilities	Playground	NWSRA Submission Willc	152943	76471.5	50.00%
Routes and Surfacing	Sidewalks	NWSRA Submission Willc	66940.1	41837.56	62.50%
Routes and Surfacing	Ramps	NWSRA Submission Willc	1431.5	894.67	62.50%

#VALUE!
#DIV/0!
#DIV/0!
#DIV/0!
#DIV/0!
#DIV/0!
#DIV/0!
#DIV/0!
#DIV/0!
#DIV/0!
#DIV/0!
#DIV/0!
#DIV/0!
#DIV/0!
#DIV/0!
#DIV/0!
#DIV/0!
#DIV/0!
#DIV/0!

Total Project Cost	328663.4
Total ADA Portion of Project Cost	226552.53
Total % of ADA Dollars Requested	68.93%