

July 13, 2018

Ms. Tracey Crawford, CTRS, CPRP  
Executive Director  
Northwest Special Recreation Association  
3000 W. Central Road; Suite 205  
Rolling Meadows, IL, 60008

Dear Ms. Crawford:

RE: 2016 & 2017 Expenditures Proposed to be Financed  
with Funds from the Special Populations Levy

Wheeling Park District hereby requests approval from the Northwest Special Recreation Association (NWSRA) Board of Directors to finance through the Special Populations Fund certain expenditures paid by the Park District in 2016 and 2017. These expenditures are for accessibility improvements at Horizon Park and Mark Twain Park. The table below details the amount requested for each item.

Project	Total Cost	Special Populations Apportionment	Amount Requested
Horizon Park Playground	\$ 98,482	93%	\$ 91,530
Mark Twain Park Playground	\$ 82,528	100%	\$ 82,528
Mark Twain Park Safety Surface	\$ 141,370	6%	\$ 8,482
<b>TOTALS</b>	<b>\$ 322,380</b>		<b>\$ 182,540</b>

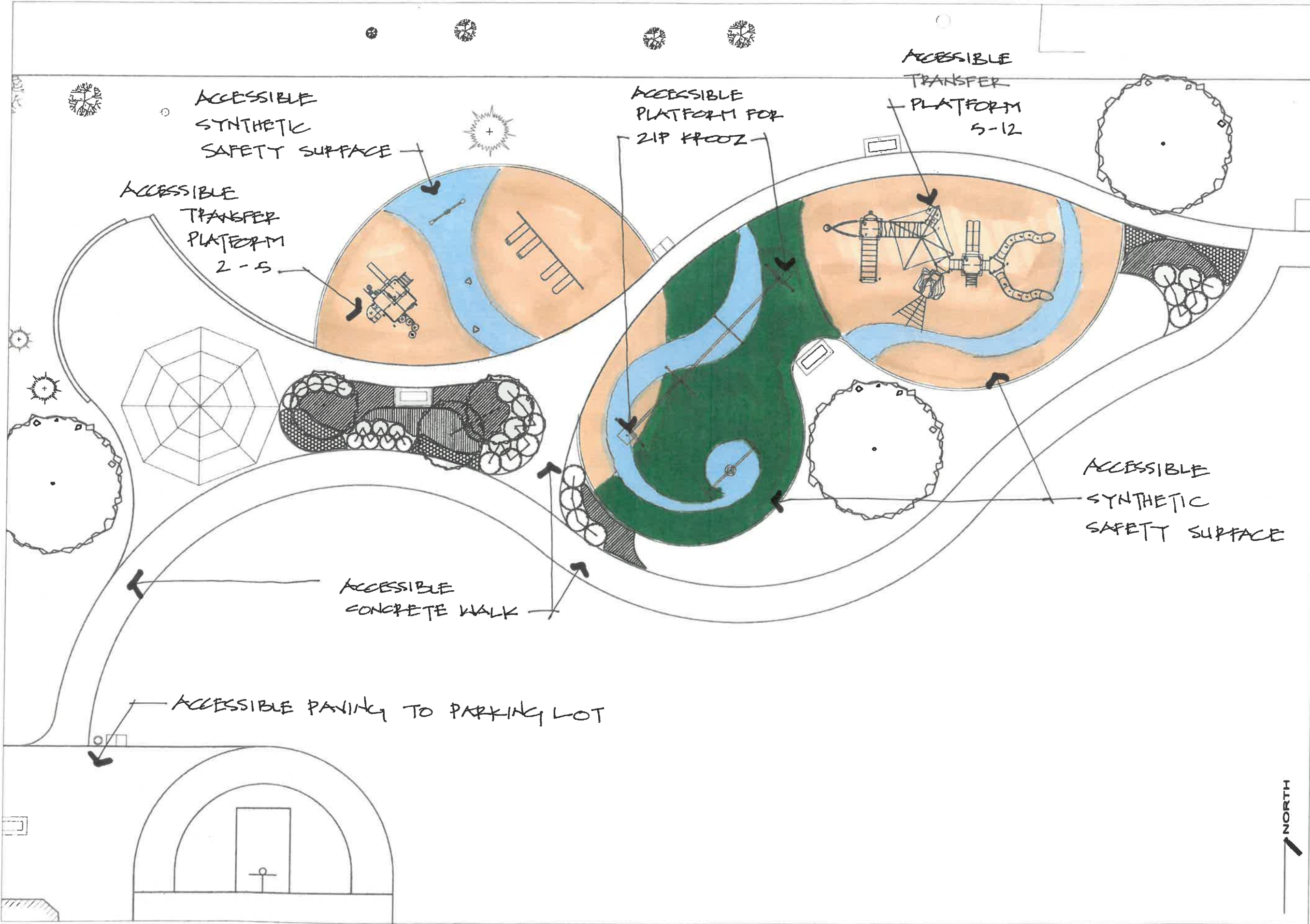
**Accessibility Improvements at Horizon Park:** This project included replacement of outdated play equipment with a new play structure, installation of a new accessible playground safety surface, and new walkways. The benefits to NWSRA include a play structure which exceeds ADA guidelines for accessibility, an accessible playground surface to the play elements, and accessibility throughout the park.

**Accessibility Improvements at Mark Twain Park:** This project included replacement of outdated play equipment with a new play structure and installation of a new playground safety surface. The benefits to NWSRA include a play structure which exceeds ADA guidelines for accessibility, and an accessible playground surface to the play elements.

Sincerely,



Jan Buchs  
Executive Director



**Planning & Development**  
 333 W. DUNDEE ROAD  
 WHEELING, IL 60090 / 847.465.3333

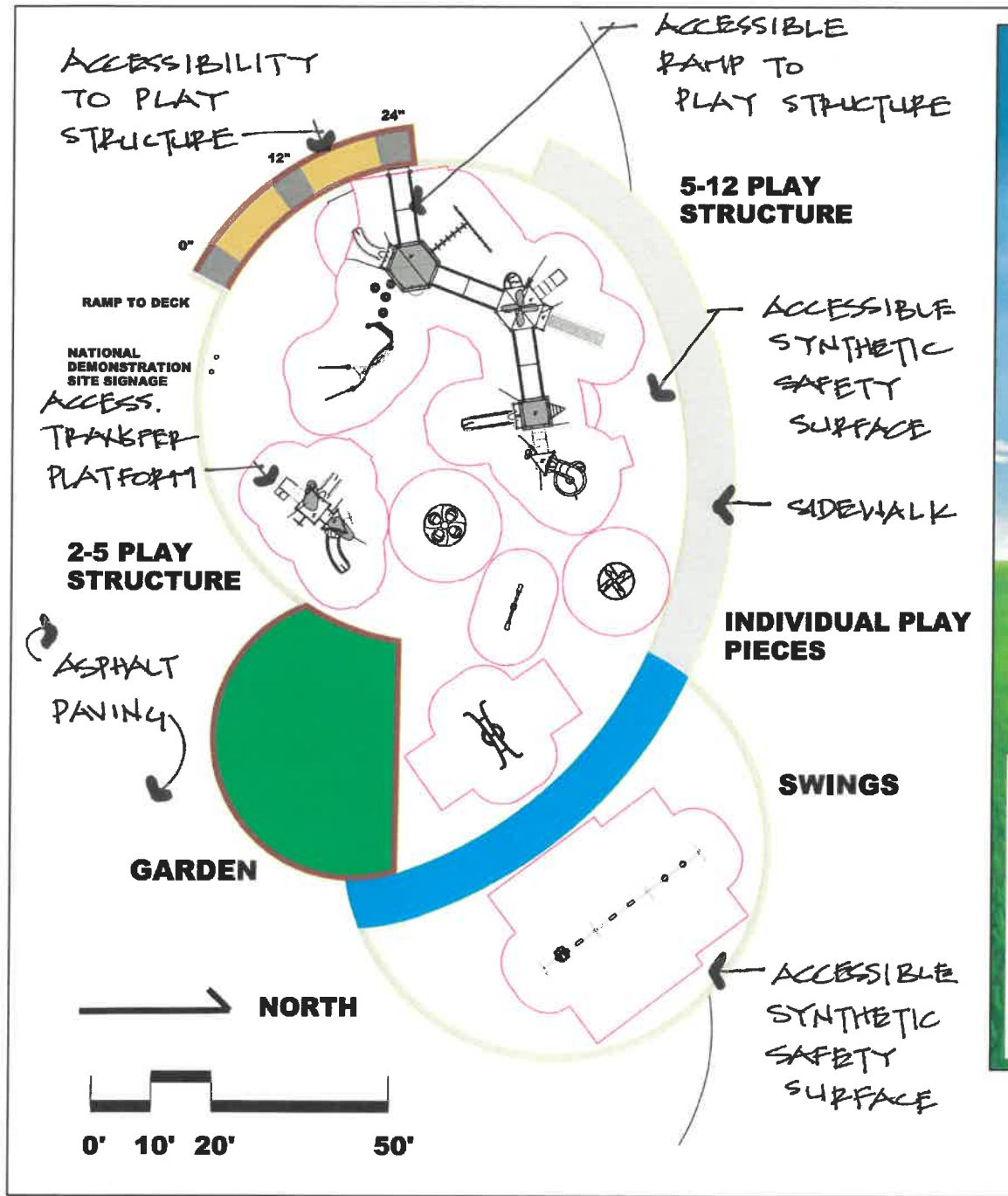
**PLAYGROUND SAFETY SURFACE CONCEPT**  
**HORIZON PARK IMPROVEMENTS**

DATE	REVISION

SCALE: 1" = 20'  
 DATE:  
 PROJECT NO.:  
 DRAWN BY: LBR  
 CHECKED BY: LBR

**SHEET**



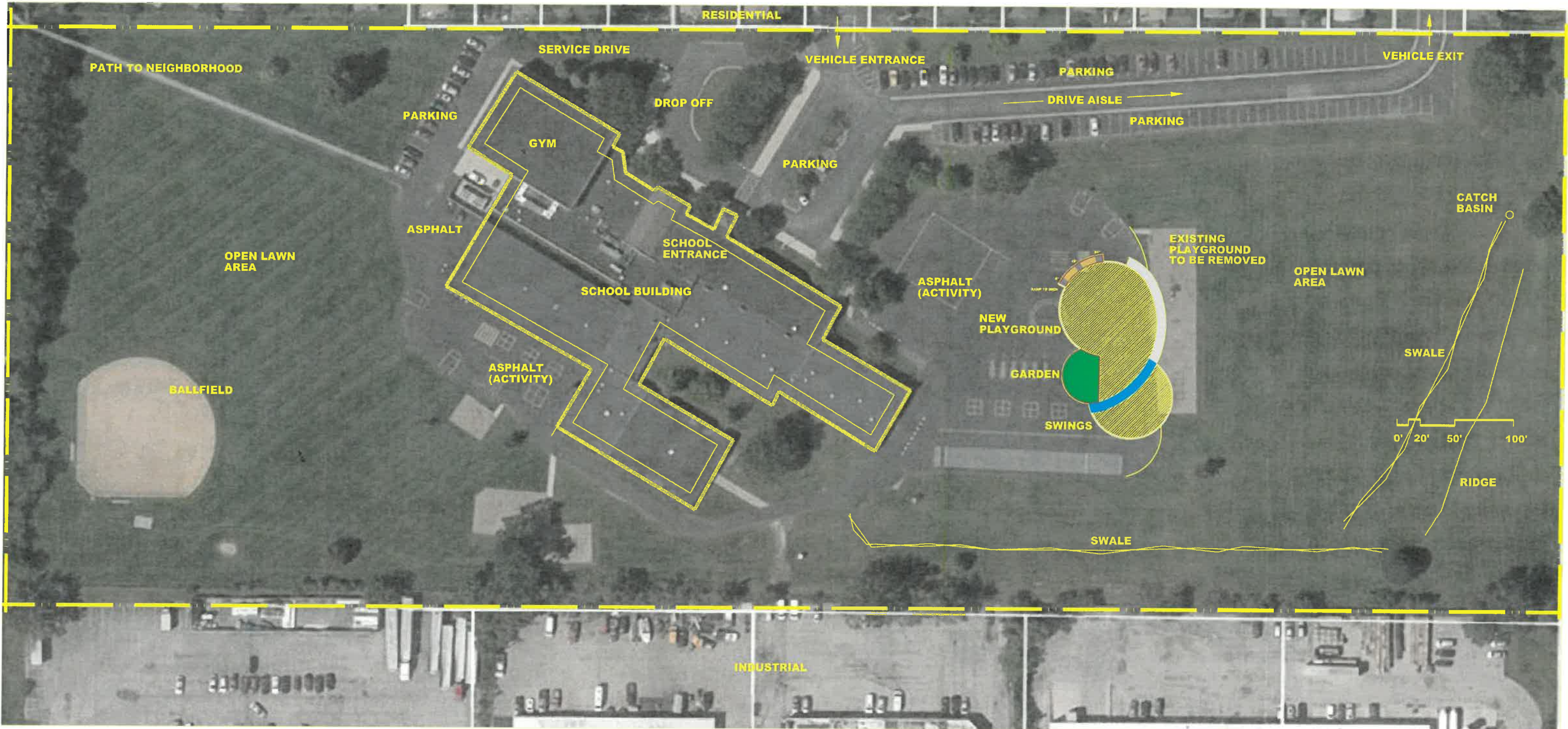


# PLAYGROUND IMPROVEMENTS - DETAIL PLAN and RENDERING

## MARK TWAIN PARK

Wheeling Park District  
 Planning and Development  
 February 24, 2017





# PLAYGROUND IMPROVEMENTS - LOCATION SITE PLAN

## MARK TWAIN PARK

Wheeling Park District  
 Planning and Development  
 February 24, 2017

