

Title **Pleasant Run Park and Husky Park** 08/19/2022  
id. 30516789

by **Kim Langner** in **Member District ADA Project Request**

100 Community Blvd.  
Wheeling, Illinois  
60090  
Illinois  
United States  
847-465-3333  
klangner@wheelingparkdistrict.com

**Original Submission** 08/19/2022

Name **Lisa Garrow**

Job Title **Administrative Assistant**

E-mail Address **lgarrow@wheelingparkdistrict.com**

Phone Number **847-465-2316**

Park District **Wheeling**

Project Location **Pleasant Run Park and Husky Park**

Project Status **New**

Project Type **Routes and Surfaces**

Routes and Surfaces- select a Project Category below:

Benefits of the Project **The safety surfacing at both parks are in need of replacement. Due to high use, portions of the surface have deteriorated beyond repair. The SMARTE surface is a hybrid playground surface that incorporates secured, recycled rubber mulch in special “pillows” that are topped by a unitary layer. SMARTE meets requirements for accessible routes per Americans with Disabilities Act Guidelines Accessible (ADAAG) and provides a safe surface that promotes inclusive play activities on the playground. The new surfacing will allow children of all abilities ease of movement across the playground. The surfacing also offers more impact than any other types of surfacing.**

Items that will become ADA Compliant

## Playground surfacing

The project is designed or constructed, or applies human resources, to comply with:

**The 2010 Standards for Accessible Design**  
**The Illinois Accessibility Code**  
**ASTM F 1951 Standard for Accessible Playground Surfaces**  
**Agency's ADA Transition Plan**

Upload Project Related Files, Photos, Videos or Audio

[Pleasant\\_Run\\_site\\_plan.pdf](#)

[Husky\\_Playground\\_Layout.pdf](#)

[Pleasant\\_Run\\_Playground.pdf](#)

[HuskySurfacingQuote.pdf](#)

[PleasantRun\\_SurfacingQuote.pdf](#)

Budget Table for ADA Related Expenses

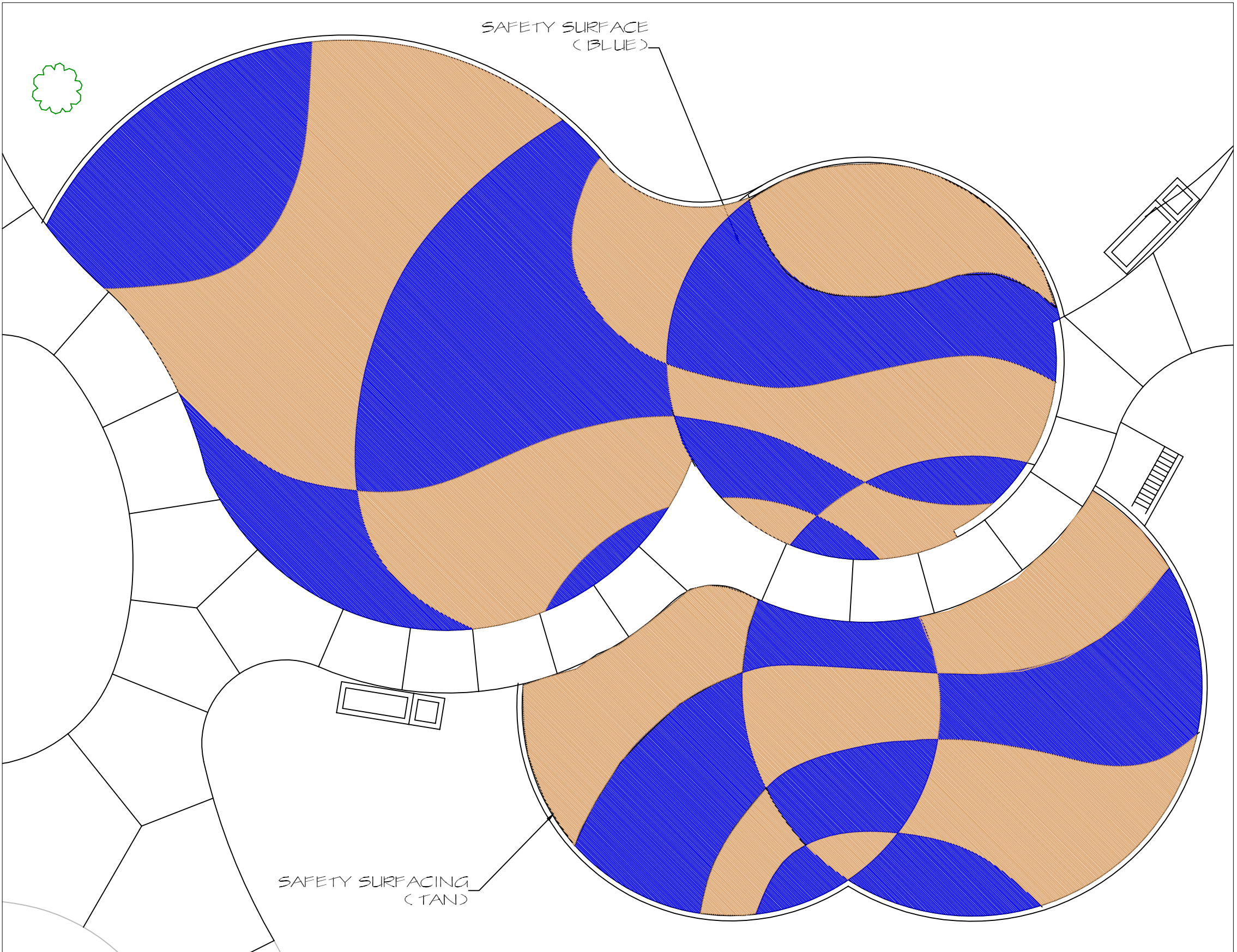
[Budget Table.xlsx](#)

ADA Dollars Requested

**103500.0**

Notes related to requested amount

n/a



**GENERAL NOTES**

1. ALL WORK TO BE DONE PER VILLAGE OF WHEELING SPECIFICATIONS
2. SEE TECH. SPEC. SECTION 02793 SYNTHETIC PLAYGROUND SAFETY SURFACE (ATTACHED)
2. INSTALL PER MANUFACT. SPECIFICATIONS



**PLANNING & DEVELOPMENT**  
 333 W. DUNDEE ROAD  
 WHEELING, IL 60090 / 847.465.3333

**PLAYGROUND LAYOUT  
 PLAN - SURFACING**

**HUSKY PARK  
 RENOVATION**

DATE	REVISION
09/27/12	PER HAEGER ENG COMMENT 8 - 09/19/12 MEMO

1

SCALE: 1" = 10'-0"

DATE: 09/12/12

PROJECT NO.:

DRAWN BY: LBR

CHECKED BY: LBR

**NOTE:**  
 The exact locations of all utilities shall be verified by the contractor prior to construction activities.  
 For utility locations call:

J.U.L.I.E.  
 1.800.892.0123

**SHEET  
 SD 4.0**





# PLEASANT RUN PARK PLAYGROUND ENLARGEMENT

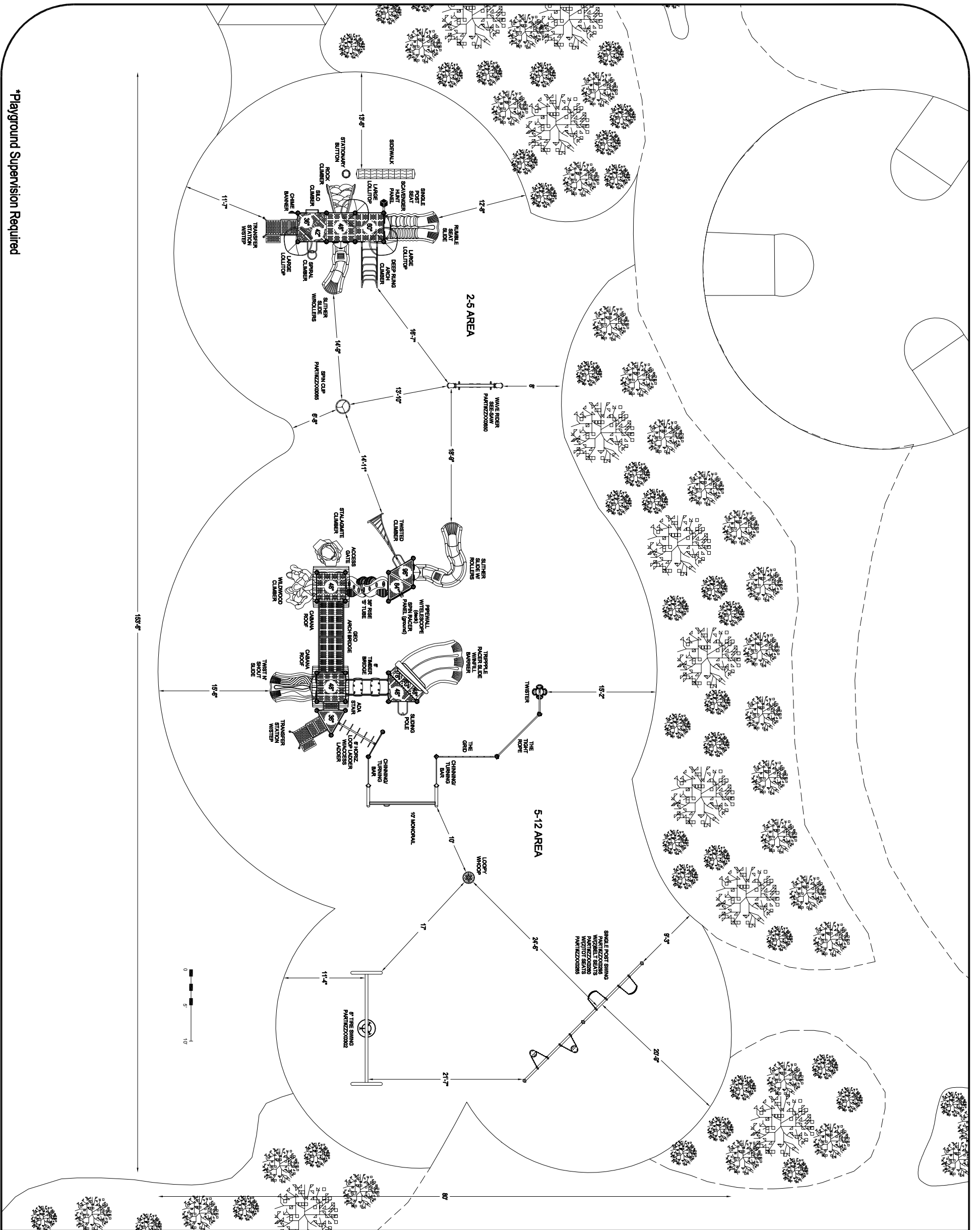
Wheeling Park District / Planning and Development



June 12, 2012  
Scale: 1"= 20'



\*Playground Supervision Required



PROJECT NO: 12-3141.PWC	REV: A	DATE: 21-JUNE-12
SYSTEM: PLAYMAKERS	SCALE: NOT TO SCALE	DRAWN BY: MICHAEL BORDNER
SITE PLAN		

Playworld Systems, Inc.  
1000 Buffalo Road  
Lewisburg, PA  
17837-9795 USA




© 2007 Playworld Systems, Inc.  
Playworld™ is a brand of Playworld Systems, Inc.

# PLEASANT RUN PARK

WHEELING, IL

Project Type (From Above)	Project Category (From Above)	Media File #/Name	Project Category Cost	ADA Portion of Project Category Cost	% ADA Dollars Requested
Routes & Surfaces	Play Surfaces	HuskySurfacingQuote	51250	51250	100.00%
Routes & Surfaces	Play Surfaces	PleasantRun_SurfacingQuote	52250	52250	100.00%

#DIV/0!  
#DIV/0!  
#DIV/0!  
#DIV/0!  
#DIV/0!  
#DIV/0!  
#DIV/0!  
#DIV/0!  
#DIV/0!  
#DIV/0!  
#DIV/0!  
#DIV/0!  
#DIV/0!  
#DIV/0!  
#DIV/0!  
#DIV/0!  
#DIV/0!  
#DIV/0!  
#DIV/0!

Total Project Cost	103500
Total ADA Portion of Project Cost	103500
Total % of ADA Dollars Requested	100.00%