

Project Location	5400 McDonough Road, Hoffman Estates, IL 60169	02/28/2020
	by Dustin Hugen in Member District ADA Project Request	id. 15345898
	dhugen@heparks.org	

Original submission	02/28/2020
----------------------------	------------

Name	Dustin Hugen
Job Title	Director of Parks, Planning & Maintenance
E-mail Address	dhugen@heparks.org
Phone Number	847-285-5465
Park District	Hoffman Estates
Project Status	Alteration Addition
Project Type	Recreation Facilities and Amenities Routes and Surfaces
Recreation Facilities and Amenities- select a Project Category below:	Playgrounds- Play Components Swim & Wading Pools- Splash Pad
Routes and Surfaces- select a Project Category below:	Play Surfaces Sidewalks
Benefits of the Project	Installation of ADA accessible playground equipment. Removing existing ADA loose fill fiber that is no longer compliant and replace with complaint ADA engineered wood fiber fall surface and and new drainage. Removal of current non accessible splash pad and replace with new accessible splash pad and completely new new walk path as another entry point to park and playground.
Items that will become ADA Compliant	New sidewalk entering the splash pad, benches around the splash pad, new wood fiber fall surface and playground equipment.

The project is designed or constructed, or applies human resources, to comply with:

**The 2013 Final Guideline for Outdoor Developed Areas Owned and Operated by the Federal Government
ASTM F 1951 Standard for Accessible Playground Surfaces**

Upload Project Related Files, Photos, Videos or Audio

[150060-02_Prinston_Park.jpg](#)

[HEPD__PG__2020_PRINCETON_SHEET_1_1_31_2020revised.pdf](#)

[Princeton_Splash_Pad_Rendering.pdf](#)

Budget Table for ADA Related Expenses

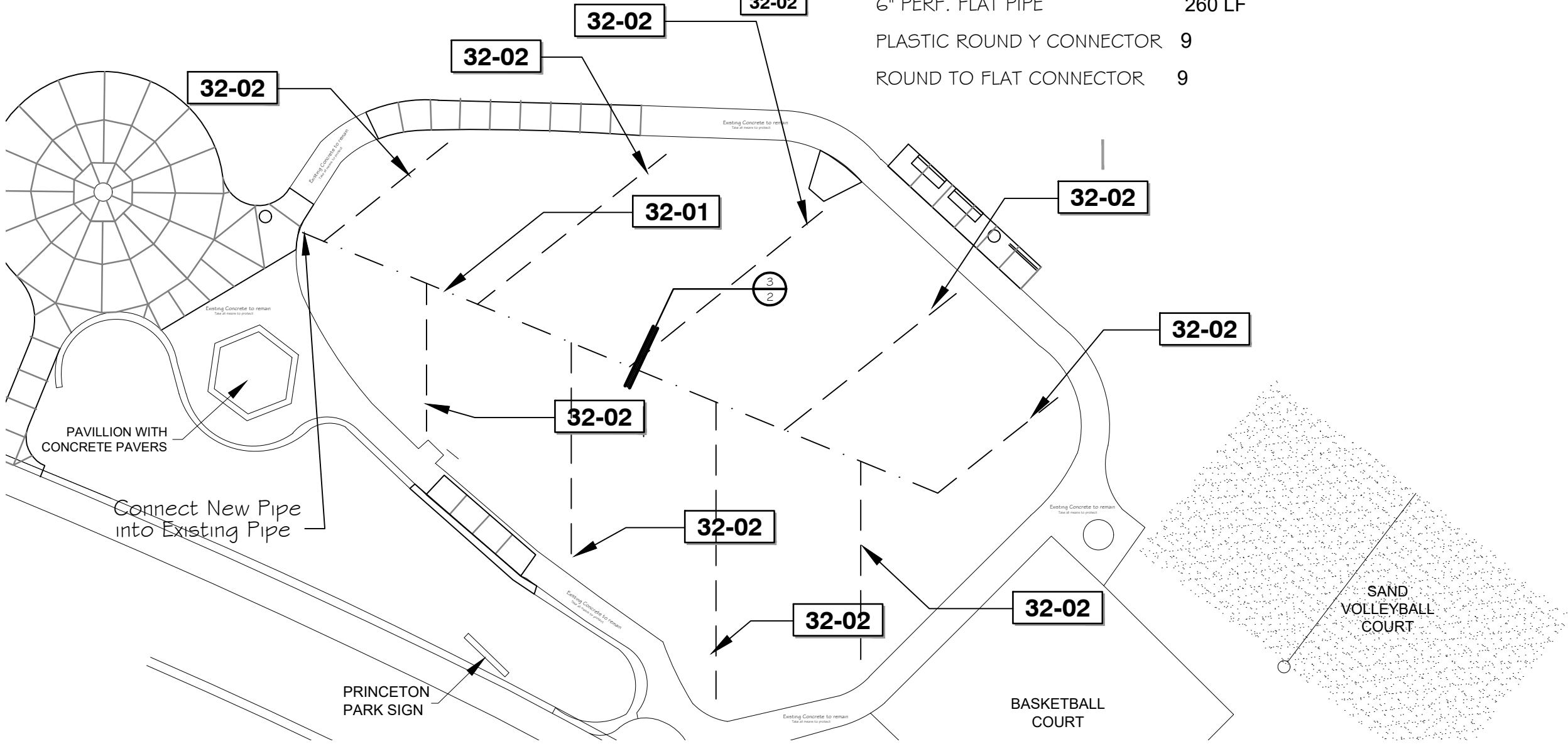
[7692b52c-70ab-4cf3-9ef5-4b194b6f5dc4.xlsx](#)

ADA Dollars Requested	42462
-----------------------	--------------

Notes related to requested amount	Hoffman Estates park District is requesting the use of ADA funds to for 20% of playground equipment cost(\$19,999), 20% of new splash pad equipment cost(\$4301) and 100% of new ADA loose fill fiber fall surface(\$15,312) and 15% of concrete which is the new walk paths and concrete for new ADA benches(\$2850).
-----------------------------------	---

REFERENCE NOTES SCHEDULE PRINCETON DRAINAGE 2020

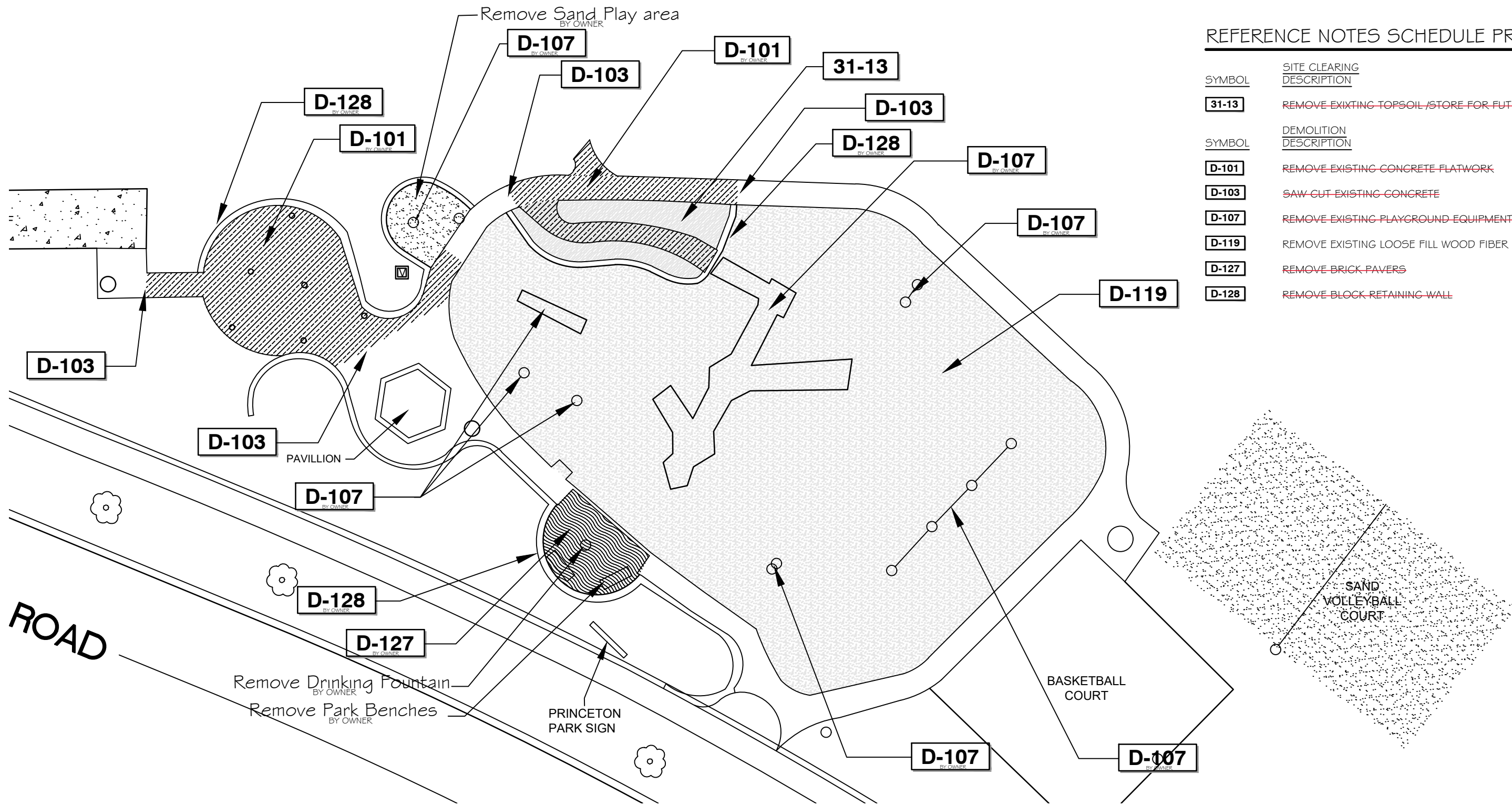
SYMBOL	32 EXTERIOR IMPROVEMENTS DESCRIPTION	QTY	DETAIL
32-01	4" ROUND PERF. DRAIN TILE	100 LF	
32-02	6" PERF. FLAT PIPE	260 LF	
	PLASTIC ROUND Y CONNECTOR	9	
	ROUND TO FLAT CONNECTOR	9	



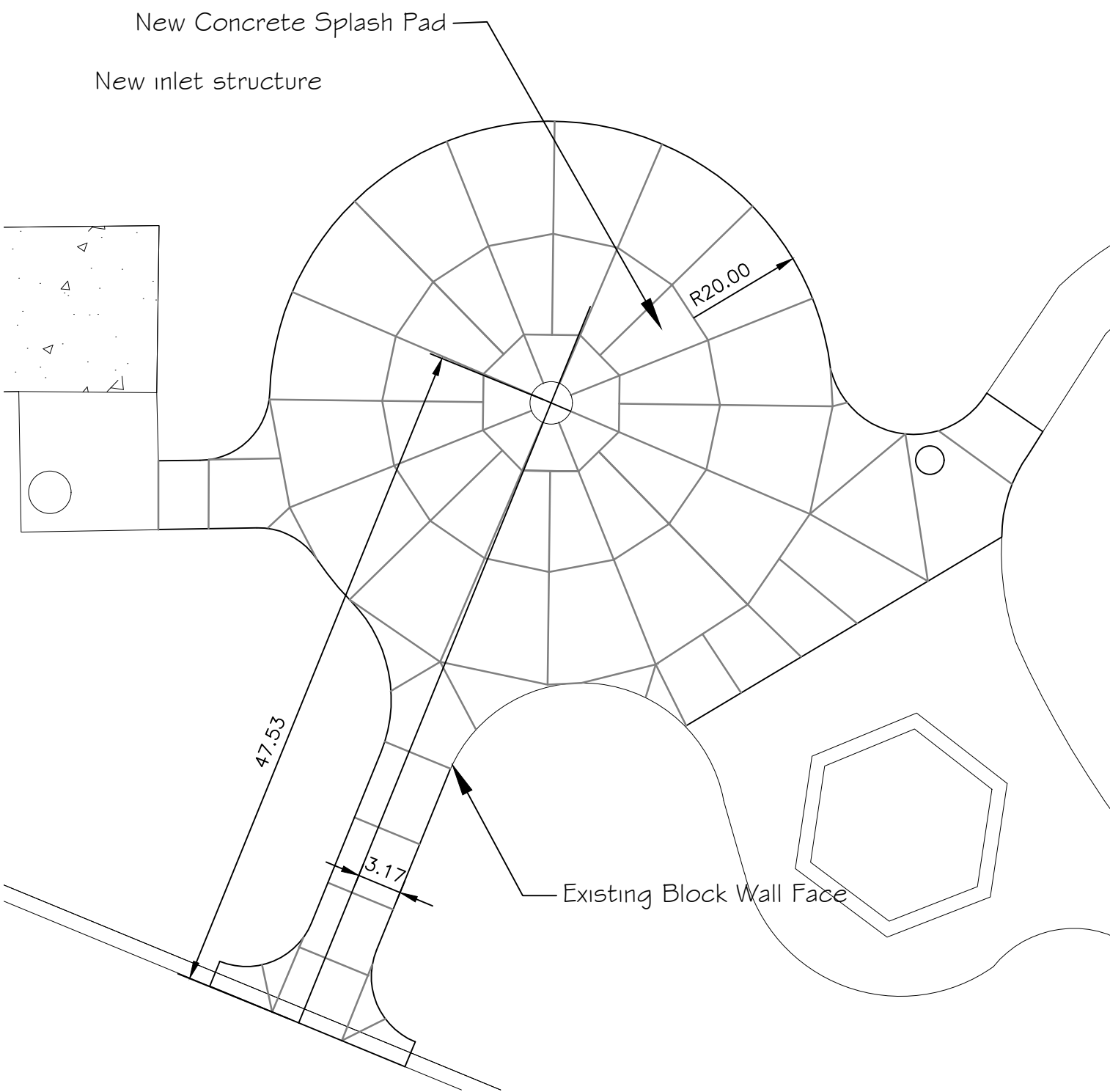
PRINCETON PLAYGROUND DRAINAGE PLAN
SCALE 1" = 20 FT

REFERENCE NOTES SCHEDULE PRINCETON DEMO 2020

SYMBOL	SITE CLEARING DESCRIPTION	QTY
31-13	REMOVE EXISTING TOPSOIL/STORE FOR FUTURE USE	484 SF
SYMBOL	DEMOLITION DESCRIPTION	QTY
D-101	REMOVE EXISTING CONCRETE FLATWORK	1,333 SF
D-103	SAW-CUT EXISTING CONCRETE	45 LF
D-107	REMOVE EXISTING PLAYGROUND EQUIPMENT	
D-119	REMOVE EXISTING LOOSE FILL WOOD FIBER	288.41 CY
D-127	REMOVE BRICK PAVERS	274 SF
D-128	REMOVE BLOCK RETAINING WALL	244 LF

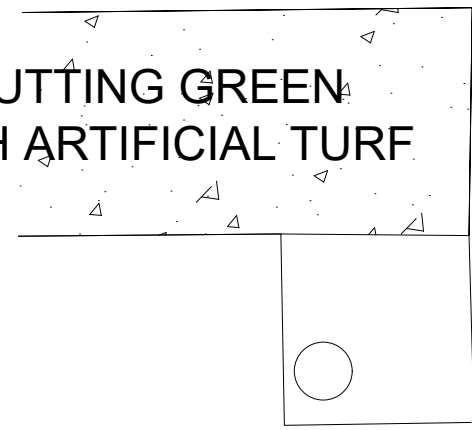


PRINCETON PLAYGROUND DEMO PLAN
SCALE 1" = 20 FT



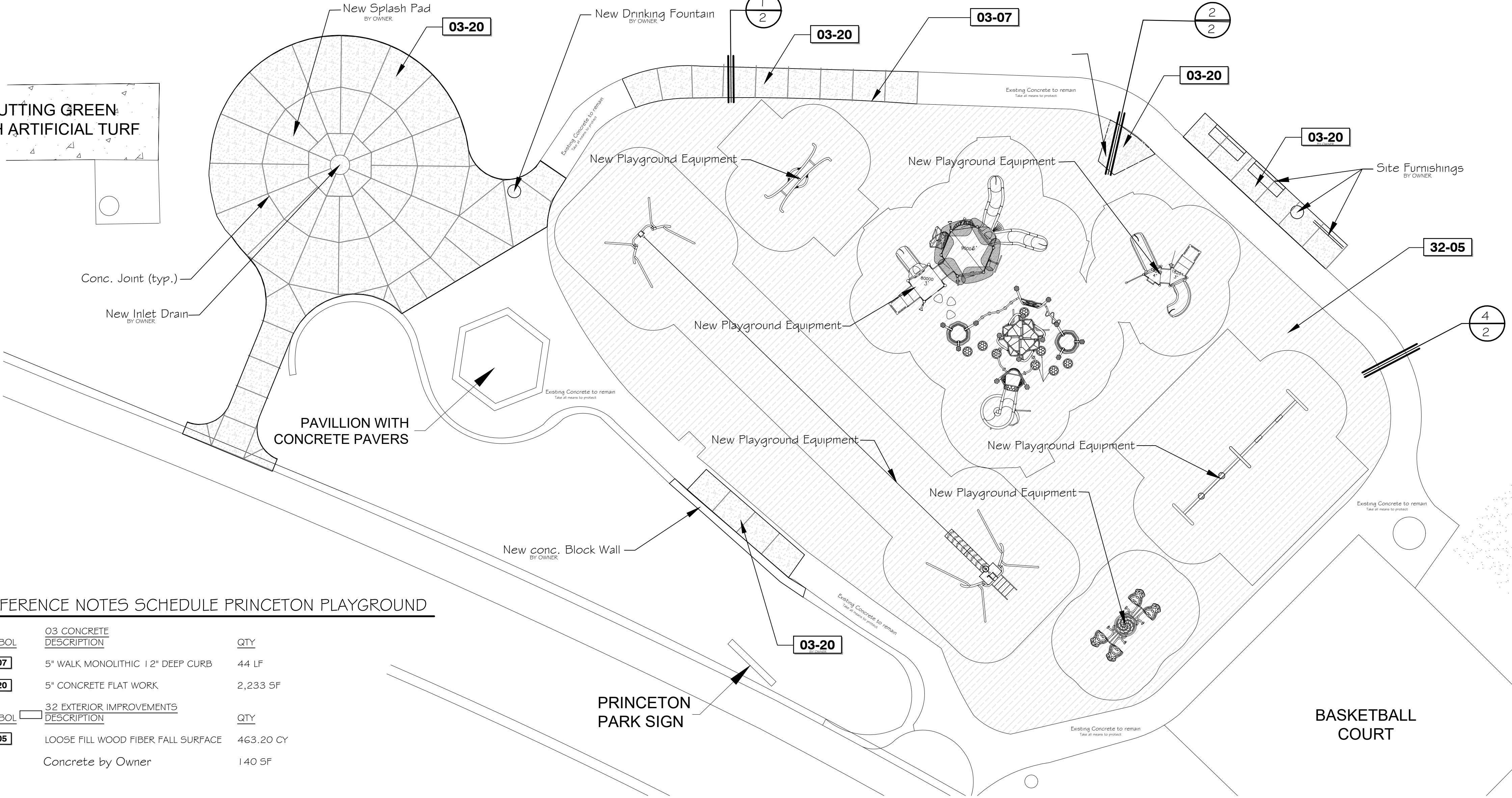
SPLASH PAD CONCRETE
LAYOUT PLAN
SCALE 1" = 10 FT

PUTTING GREEN
WITH ARTIFICIAL TURF



REFERENCE NOTES SCHEDULE PRINCETON PLAYGROUND

SYMBOL	03 CONCRETE DESCRIPTION	QTY
03-07	5" WALK MONOLITHIC 1/2" DEEP CURB	44 LF
03-20	5" CONCRETE FLAT WORK	2,233 SF
SYMBOL	32 EXTERIOR IMPROVEMENTS DESCRIPTION	QTY
32-05	LOOSE FILL WOOD FIBER FALL SURFACE	463.20 CY
	Concrete by Owner	140 SF



PRINCETON NEW PLAYGROUND OVERALL PLAN
SCALE 1" = 10 FT

Princeton Park Hoffman Estates, IL

Design • Build • PLAY!









Project Type (From above)	Project Category (From Above)	Media File #/Name	Project Category Cost	ADA Portion of Project Category Cost	% ADA Dollars Requested
Recreation Facility and	Playground		99999.91	19999	20.00%
Recreation Facilities at	Splash Pad		21506	4301	20.00%
Routes and Surfaces	Play Surface		15312	15312	100.00%
Routes and Surfaces	Sidewalks		18964	2850	15.03%
				#VALUE!	
				#DIV/0!	
				#DIV/0!	
				#DIV/0!	
				#DIV/0!	
				#DIV/0!	
				#DIV/0!	
				#DIV/0!	
				#DIV/0!	
				#DIV/0!	
				#DIV/0!	
				#DIV/0!	
				#DIV/0!	
				#DIV/0!	
				#DIV/0!	
				#DIV/0!	
				#DIV/0!	
				#DIV/0!	
				#DIV/0!	
Total Project Cost		155781.91			
Total ADA Portion of Project Cost		42462			
Total % of ADA Dollars Requested		27.26%			

[illegible]