

Title **Country Gardens, Kiwanis, Clare, School Street, Jaycee, Lions Parks** 10/27/2023
id. 44527983

by **Mark Grassi** in **Member District ADA Project Request**

110 W Camp McDonald Rd
Prospect Heights, Illinois
60070
United States
8473942848
mgrassi@phparks.org

Original Submission 10/27/2023

Name	Mark Grassi
Job Title	Superintendent of Parks and Facilities
E-mail Address	mgrassi@phparks.org
Phone Number	8476664867
Park District	Prospect Heights
Project Location	Country Gardens, Kiwanis, Clare, School Street, Jaycee, Lions Parks
Project Status	Alteration Maintenance
Project Type	Routes and Surfaces
Routes and Surfaces- select a Project Category below:	Play Surfaces Sidewalks Ramps

Benefits of the Project	The Prospect Heights Park District has invested in several accessible designs and improvements towards various parks for the purpose of not only maximizing community participation, but to enhance experiences for residents specifically who require special needs or accommodations. With the new construction of compliant routes/ramps, mats, and installation of maintained surfacing, we hope to create more opportunity that connects individuals to our tennis courts, basketball courts and playgrounds that depend on these accessible designs that not only meet but exceed ADA standards. This proposal summarizes the specific projects, surfacing installed and types of spaces the district has transitioned toward to provide Country Gardens Park, Kiwanis Park, Clare Lane Park, School Street Park, Jaycee Park, and Lions Park more accessible opportunities for inclusion. With the following items below, we request NWSRA to authorize the Prospect Heights Park District to supplement these accessibility improvements with ADA funds.
-------------------------	--

Items that will become ADA Compliant	Accessibility of areas within listed parks: Sidewalks have been constructed to pass between parking lots and several basketball courts and tennis courts. Transition areas with mats to playgrounds have been installed, along with engineered wood fiber added to play surface.
--------------------------------------	--

The project is designed or constructed, or applies human resources, to comply with:	The 2010 Standards for Accessible Design ASTM F 1951 Standard for Accessible Playground Surfaces Agency's ADA Transition Plan
---	---

Upload Project Related Files, Photos, Videos or Audio

[Country_Gardens_Total_Project.pdf](#)

[Kuwanis_Total_Project.pdf](#)

[Claire_Lane_Total_Project.pdf](#)

[School_Jaycee_GMRC_and_IPEMA_Certification_Total_Project.pdf](#)

[Prospect_Heights_Park_District_Proposal_for_SRA_Levy_Funds.docx](#)

Budget Table for ADA Related Expenses

[Budget Table.xlsx](#)

ADA Dollars Requested	33895.0
-----------------------	---------

Notes related to requested amount	None
-----------------------------------	------

October 16, 2023

Ms. Tracey Crawford, CTRS, CPRS, Executive Director
Northwest Special Recreation Association
3000 Central Rd. – Suite 205
Rolling Meadows, IL 60008

Re: NWSRA Use of Accessibility Funds

Dear Ms. Crawford,

The Prospect Heights Park District has invested in several accessible designs and improvements towards various parks for the purpose of not only maximizing community participation, but to enhance experiences for residents specifically who require special needs or accommodations. With the new construction of compliant routes/ramps, mats, and installation of maintained surfacing, we hope to create more opportunity that connects individuals to our tennis courts, basketball courts and playgrounds that depend on these accessible designs that not only meet but exceed ADA standards.

This proposal summarizes the specific projects, surfacing installed and types of spaces the district has transitioned toward to provide Country Gardens Park, Kiwanis Park, Clare Lane Park, School Street Park, Jaycee Park, and Lions Park more accessible opportunities for inclusion. With the following items below, we request NWSRA to authorize the Prospect Heights Park District to supplement these accessibility improvements with ADA funds.

1. Country Gardens Park

- a. One concrete path 5 feet wide extending a total of 135 linear feet, connecting the parking lot to the tennis court with two ADA mats.
- b. Two additional ADA mats at both entrances of the playground area.
- c. 45 cu. yds. of ASTM F3351 – 19e1 certified engineered wood fiber installed within the playground area.

The accessible concrete path, two ADA playground mats and newly maintained engineered wood fiber surfacing of the playground meet the current 2010 ADA Standards for Accessible Design as cited in Chapter 2 Section 206 Accessible Route Within a Site, Chapter 4 Section 402 Accessible Routes and IPEMA Certification. We request authorization for the Prospect Heights Park District to use ADA funds in the amount of **\$17,930.00** for improvements and work associated with Country Gardens Park.

2. Kiwanis Park

- a. One concrete path 5 feet wide extending a total of 75 linear feet, connecting the main entrance of the park to the basketball court.
- b. One ADA mat at the entrance of the park at the beginning of the concrete path.
- c. 30 cu. yds. of ASTM F3351 – 19e1 certified engineer wood fiber installed within the playground area.

The accessible concrete path, one ADA playground mat and newly maintained engineered wood fiber surfacing of the playground meet the current 2010 ADA Standards for Accessible Design as cited in Chapter 2 Section 206 Accessible Route Within a Site, Chapter 4 Section 402 Accessible Routes, Chapter 3 Building Blocks Section 302 Floor and Ground Surfaces and IPEMA Certification. We request authorization for the Prospect Heights Park District to use ADA funds in the amount of **\$8810.00** for improvements and work associated with Kiwanis Park.

3. Clare Lane Park

- a. Two concrete pads 5ft. x 5ft with ADA mats installed at entrances of the playground area.
- b. 30 cu. yds. Of ASTM F3351 – 19e1 certified engineer wood fiber installed within the playground area.

The two concrete pads with ADA playground mats and newly maintained engineered wood fiber surfacing of the playground meet the current 2010 ADA Standards of Accessible Design as cited in Chapter 2 Section 206 Accessible Route within a Site, Chapter 3 Building Blocks Section 302 Floor and Ground Surfaces and IPEMA Certification. We request authorization for the Prospect Heights Park District to use ADA funds in the amount of **\$3860.00** for the improvements and work associated with Clare Lane Park.

4. School Street Park, Jaycee Park and Lions Park

- a. 115 cu. yds. Of ASTM F3351-19e1 certified engineer wood fiber installed within all 3 playgrounds located at respective parks/centers.

The newly maintained engineered wood fiber surfacing of the playgrounds meet the current 2010 ADA Standards of Accessible Design as cited in Chapter 2 Section 206 Accessible Route within a Site, Chapter 3 Building Blocks Section 302 Floor and Ground Surfaces and IPEMA Certification. We request authorization for the Prospect Heights Park District to use ADA funds in the amount of **\$3295.00** for the improvements and work associated with School Street Park, Jaycee Park and Lions Park.

In summary, we request authorization for the Prospect Heights Park District to use ADA funds in the **total amount of \$33,895.00** for accessibility improvements within our district.

Mark Grassi
Superintendent of Parks and Facilities
Prospect Heights Park District

Invoice

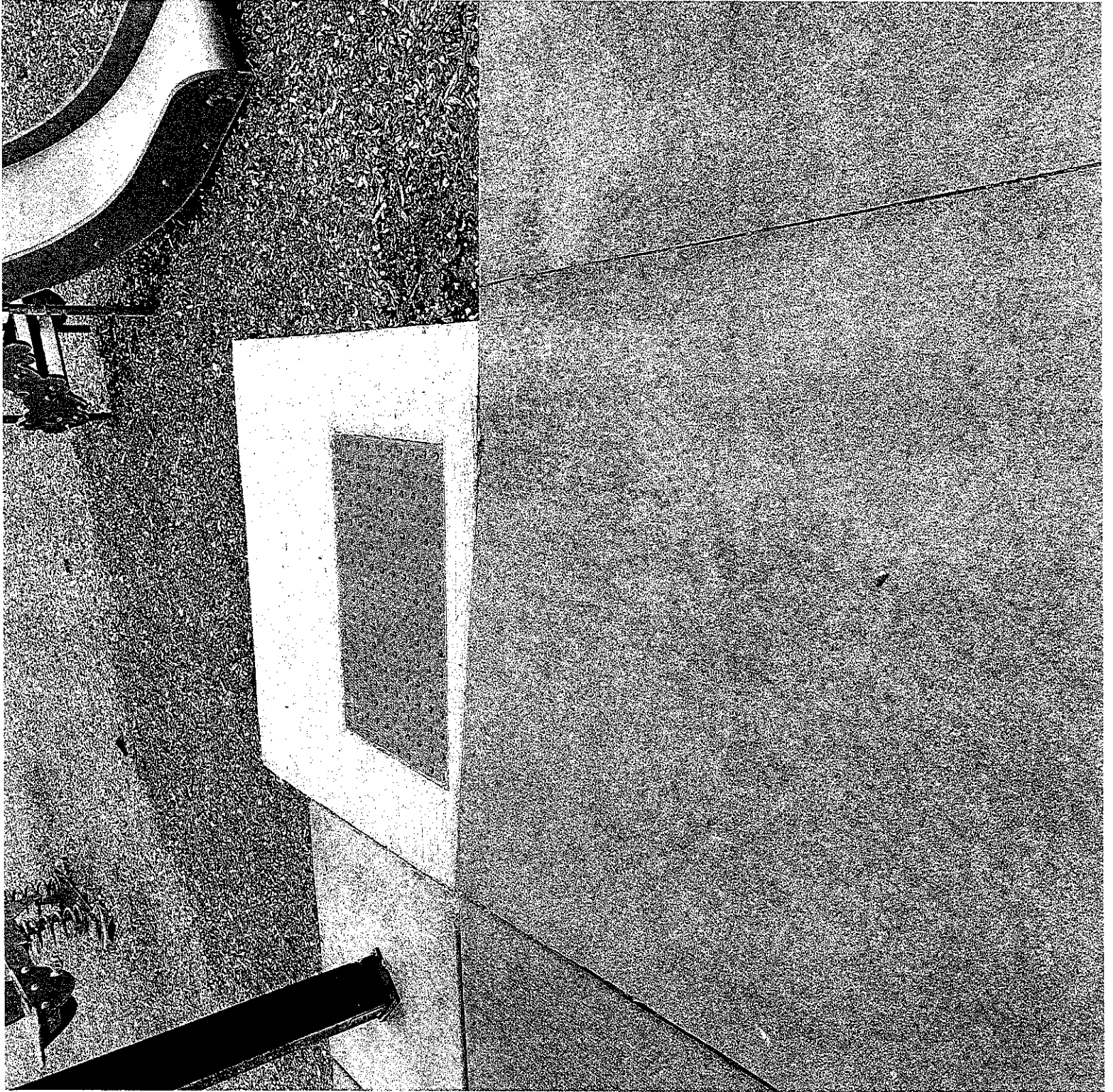
CANNELLA CONSTRUCTION INC
5304 N Union Rd
Union IL 60180
630-915-3682

DATE	Invoice #
6/23/2023	1995

BILL TO:	PROJECT
Prospect Heights Park District 110 W Camp McDonald RD Prospect Heights, IL	Claire Park
	PO

DESCRIPTION	RATE	AMOUNT DUE
Installation of, two 5' x 5' ADA entrances at each playground with ADA mats	2,970.00	2,970.00

Per Pan American Bank Which holds CCI, LOC, payments after 45 days will incur a 5% late fee of the outstanding balance to avoid potential default and interest rate increases.	AMOUNT DUE	\$2,970.00
	Payments/Credits:	\$0.00
PHONE #	BALANCE DUE	\$2,970.00
630-915-3682		





CANNELLA CONSTRUCTION INC
5304 N Union Rd
Union IL 60180
630-915-3682

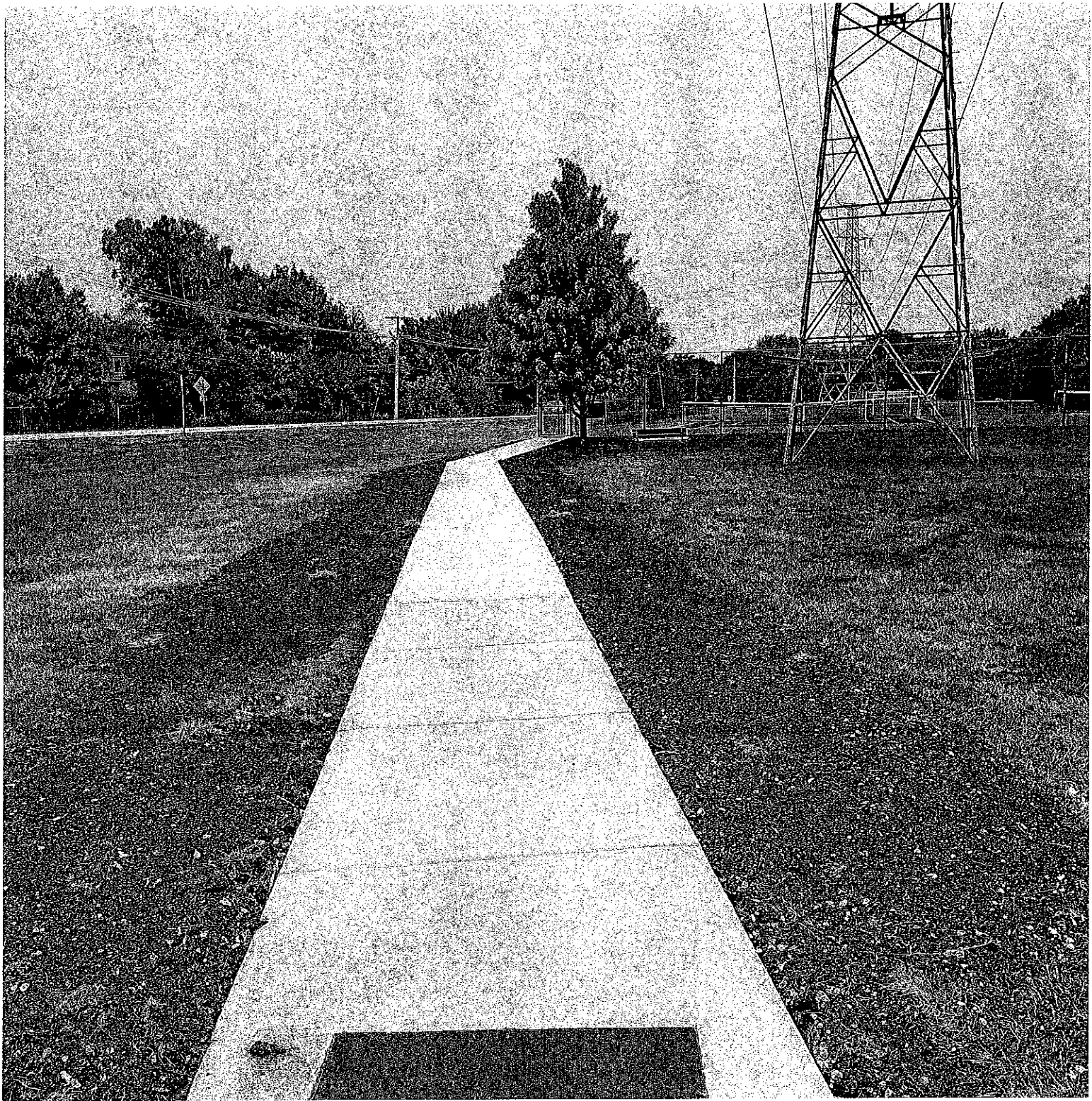
Invoice

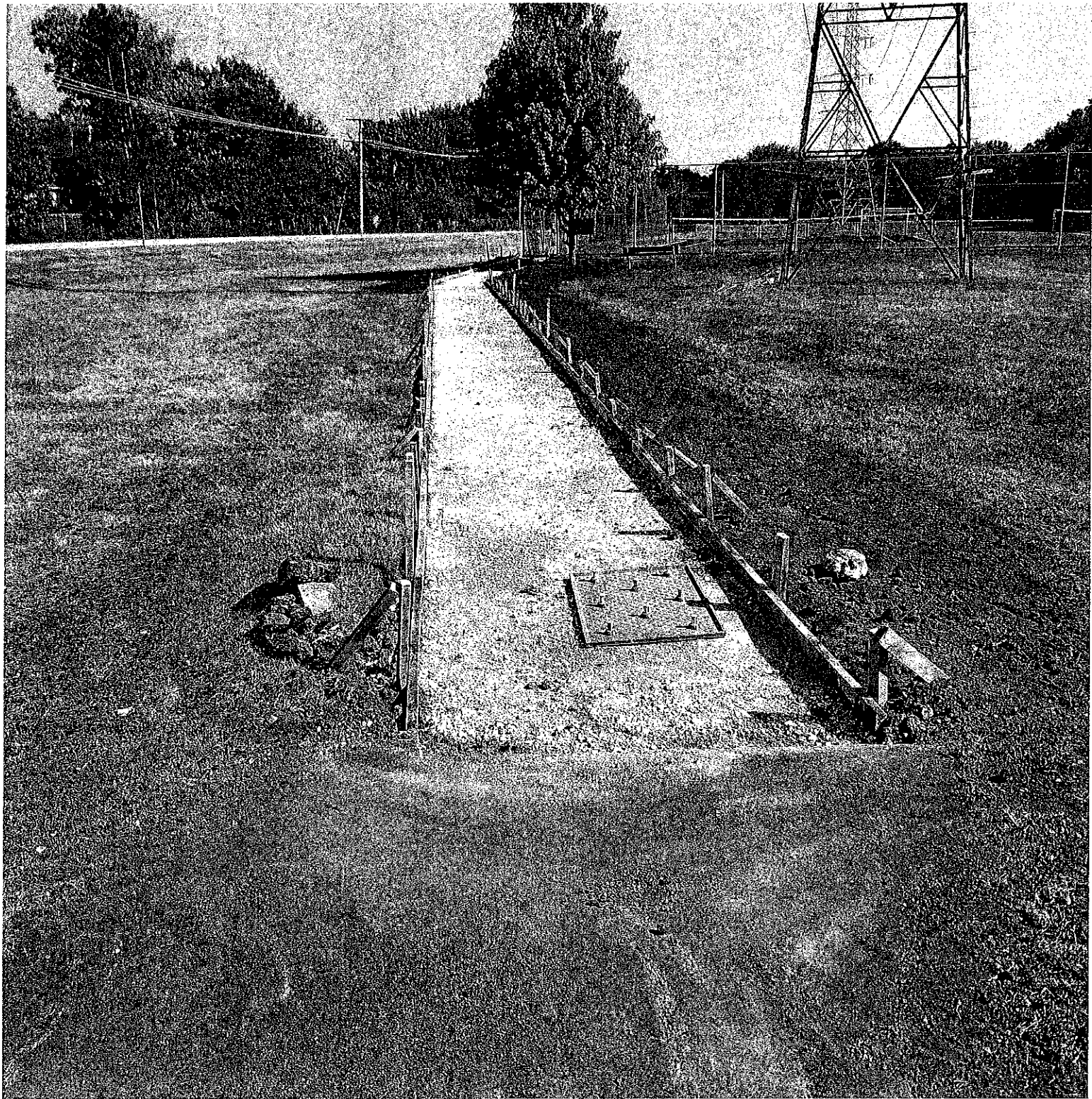
DATE	Invoice #
6/23/2023	1997

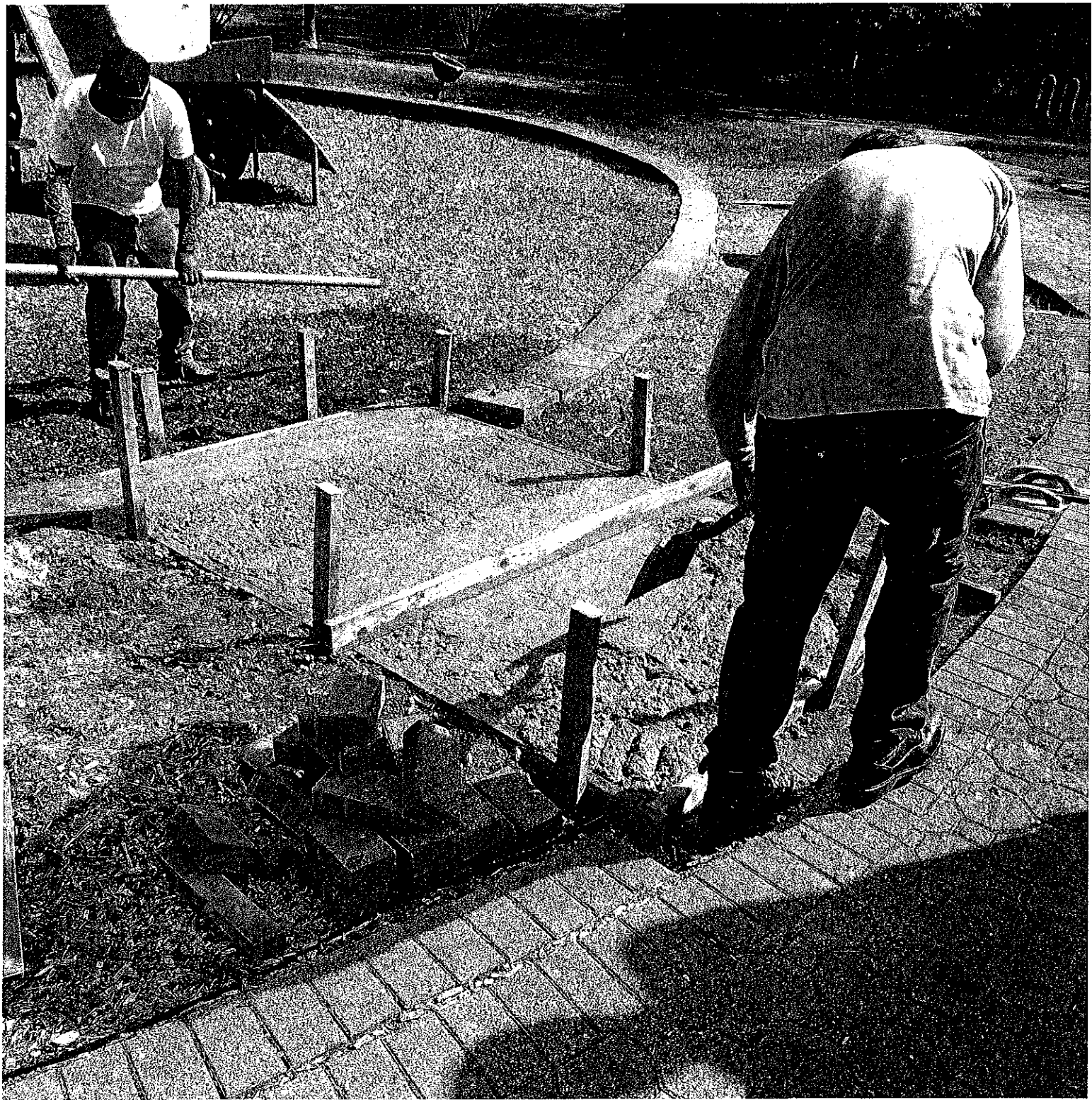
BILL TO:	PROJECT
Prospect Heights Park District 110 W Camp McDonald RD Prospect Heights, IL	Country Garden
	PO

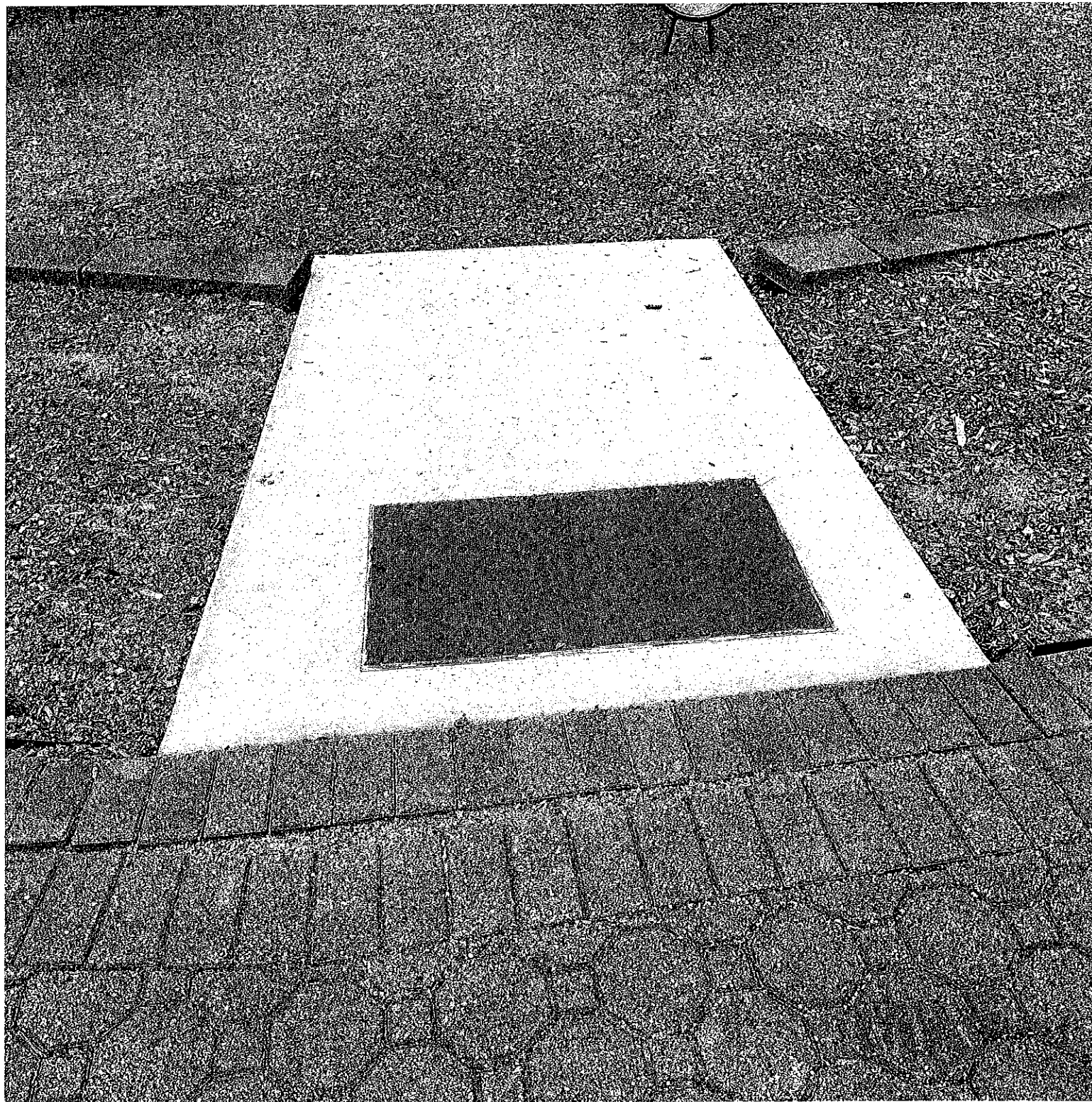
DESCRIPTION	RATE	AMOUNT DUE
Install approximately 135 linear feet by 5 foot wide 4 inch thick 4000PSI concrete from asphalt pad to entrance of tennis courts ADA Matt's to be installed at the beginning and end Lawn restoration is included in the price, backfill and seed only.	9,880.00	9,880.00
Install 2 ADA mats at entrance ramps to the two hexagon play areas. Price includes removal of pavers and reinstallation of pavers along with an ADA mat at each location.	6,790.00	6,790.00

Per Pan American Bank Which holds CCI, LOC, payments after 45 days will incur a 5% late fee of the outstanding balance to avoid potential default and interest rate increases. PHONE # 630-915-3682	AMOUNT DUE	\$16,670.00
	Payments/Credits:	\$0.00
	BALANCE DUE	\$16,670.00











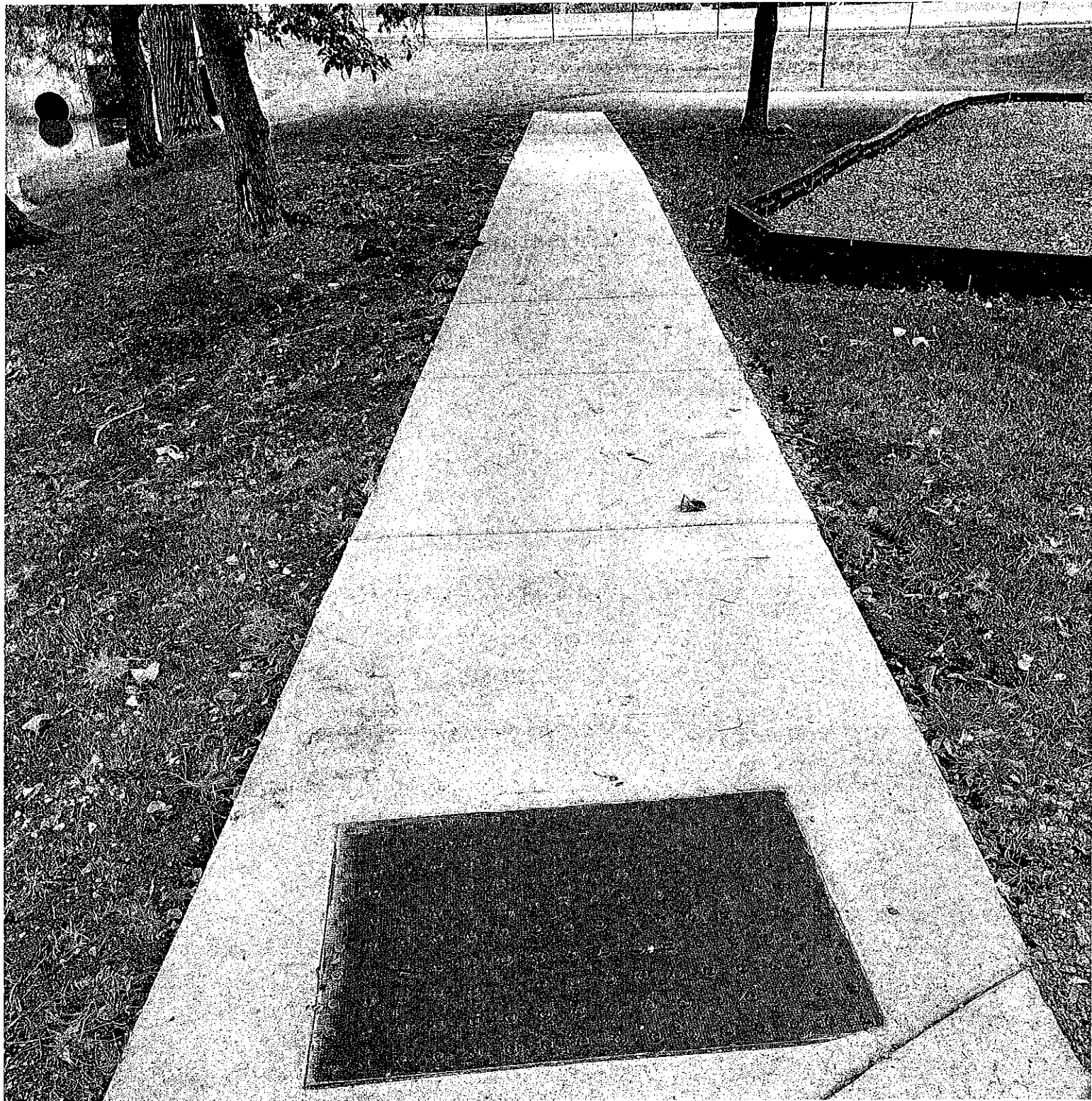
Invoice

CANNELLA CONSTRUCTION INC
5304 N Union Rd
Union IL 60180
630-915-3682

DATE	Invoice #
6/23/2023	1996

BILL TO:	PROJECT	
Prospect Heights Park District 110 W Camp McDonald RD Prospect Heights, IL	Kiwanis Park	
		PO
DESCRIPTION	RATE	AMOUNT DUE
Installation of new concrete sidewalk from playground to tennis courts Plus -75ft. 5 foot wide 4 inch thick over 4 inch gravel. Fiber mesh ADA mat installed at entrance and exit of new sidewalk. Lawn restoration is included in the price, backfill and seed only.	7,970.00	7,970.00

Per Pan American Bank Which holds CCI, LOC, payments after 45 days will incur a 5% late fee of the outstanding balance to avoid potential default and interest rate increases.	AMOUNT DUE	\$7,970.00
	Payments/Credits:	\$0.00
PHONE #	BALANCE DUE	\$7,970.00
630-915-3682		



Client: Clean Cut Tree Care

TUV Report No.: 72188228-3

Manufacturer: Grayslake, IL

Test Date: 4/27/2023 & 4/28/2023

Drop	Specified Impact Height (Ft.)	Reference Temperature -4°C, (25°F)				Reference Temperature 23°C, (72°F)				Reference Temperature 49°C, (120°F)			
		G-Max	HIC	Velocity (ft/s)	Theoretical Drop Height (ft.)	G-Max	HIC	Velocity (ft/s)	Theoretical Drop Height (ft.)	G-Max	HIC	Velocity (ft/s)	Theoretical Drop Height (ft.)
1	12	58	214	27.8	12.01	51	237	27.9	12.10	48	185	27.8	12.01
2	12	75	357	28.0	12.19	67	282	28.0	12.19	64	239	28.0	12.19
3	12	91	467	28.1	12.28	79	354	28.1	12.28	76	321	28.1	12.28
Average		83.0	412.0			73.0	318.0			70.0	280.0		
Measured Surface Temperature		-2°C	Max. Change from reference + 3°C, (5°F)			22°C	Max. Change from reference ± 3°C, (5°F)			47°C	Max. Change from reference -3°C, (-5°F)		
Sample Condition:		Dry				Dry				Dry			

